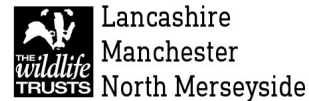


# Interreg Care-Peat

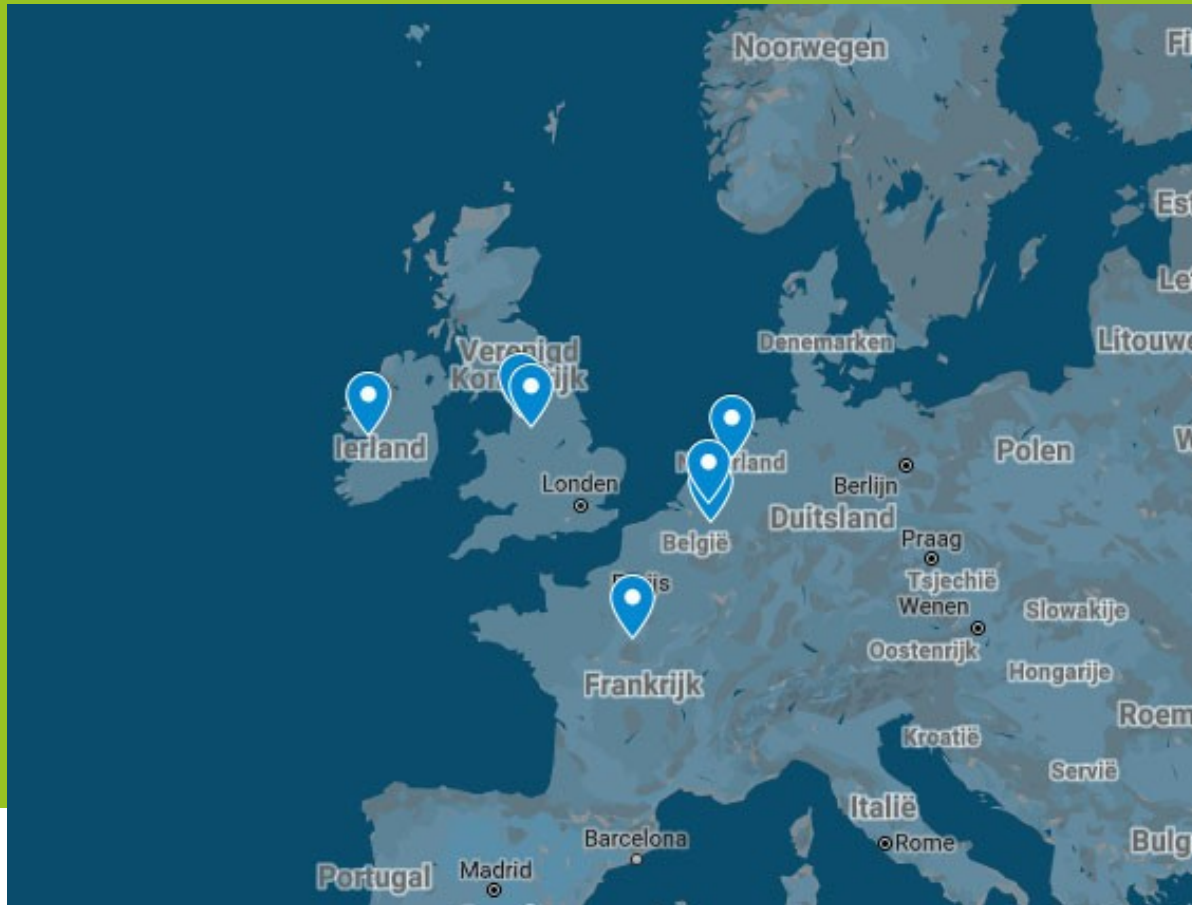
Restoring the carbon storage capacity of peatlands:  
Demonstrating innovative techniques for carbon reduction

Sarah Johnson  
Lancashire Wildlife Trust



## 7 pilot sites across 5 countries

In Belgium, The Netherlands, France, Ireland and United Kingdom

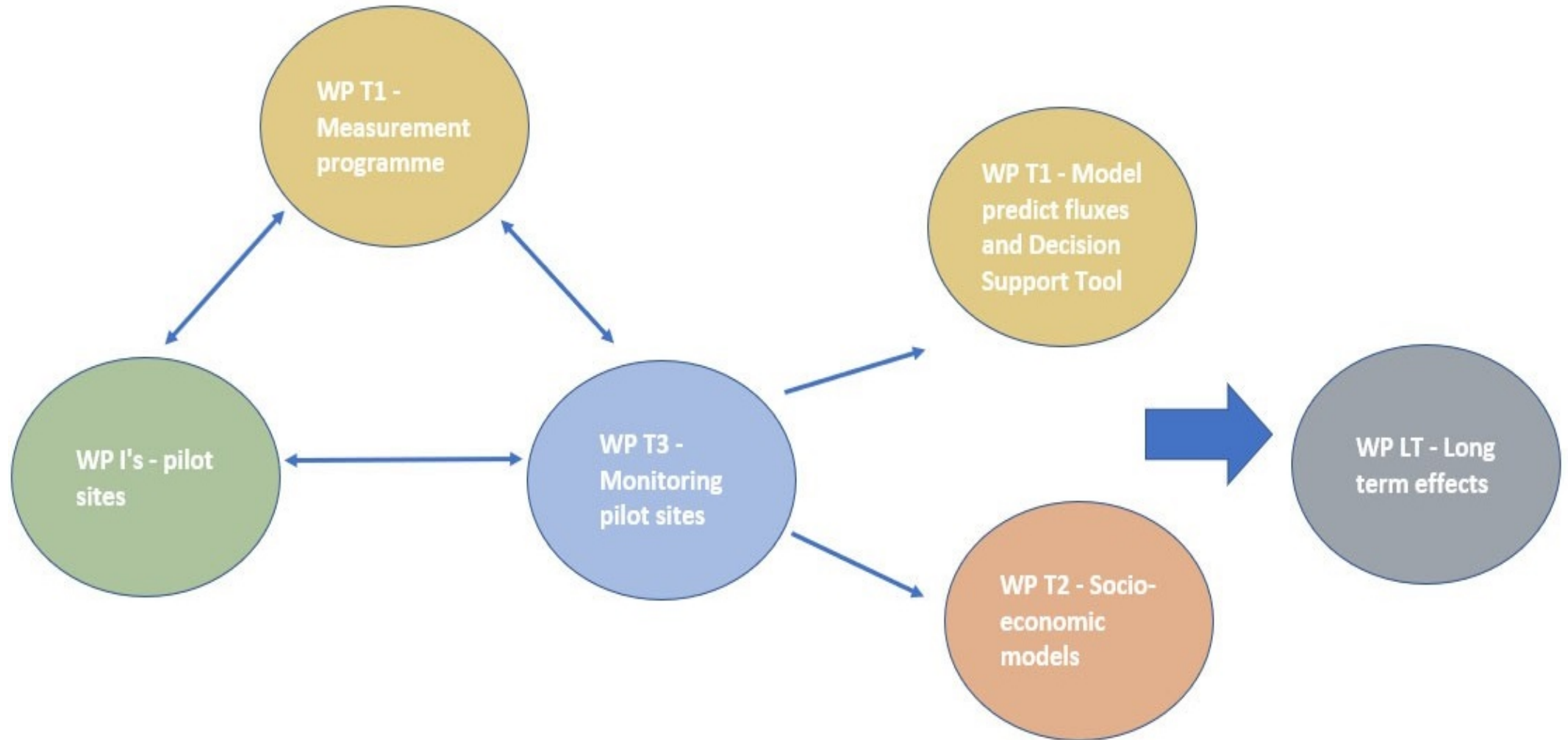


**To reduce C-emissions and restore C-storage capacity of different types of peatland**

1. Development of reliable measuring methods and predictive models of C-fluxes in peatlands as base for a decision making tool
2. Identify sustainable socio-economic models... and policies to promote peatland restoration
3. Demonstrating new techniques and methods to restore and improve C-sequestration in peatlands

# Interreg Care-Peat

## one project, different Work Packages's



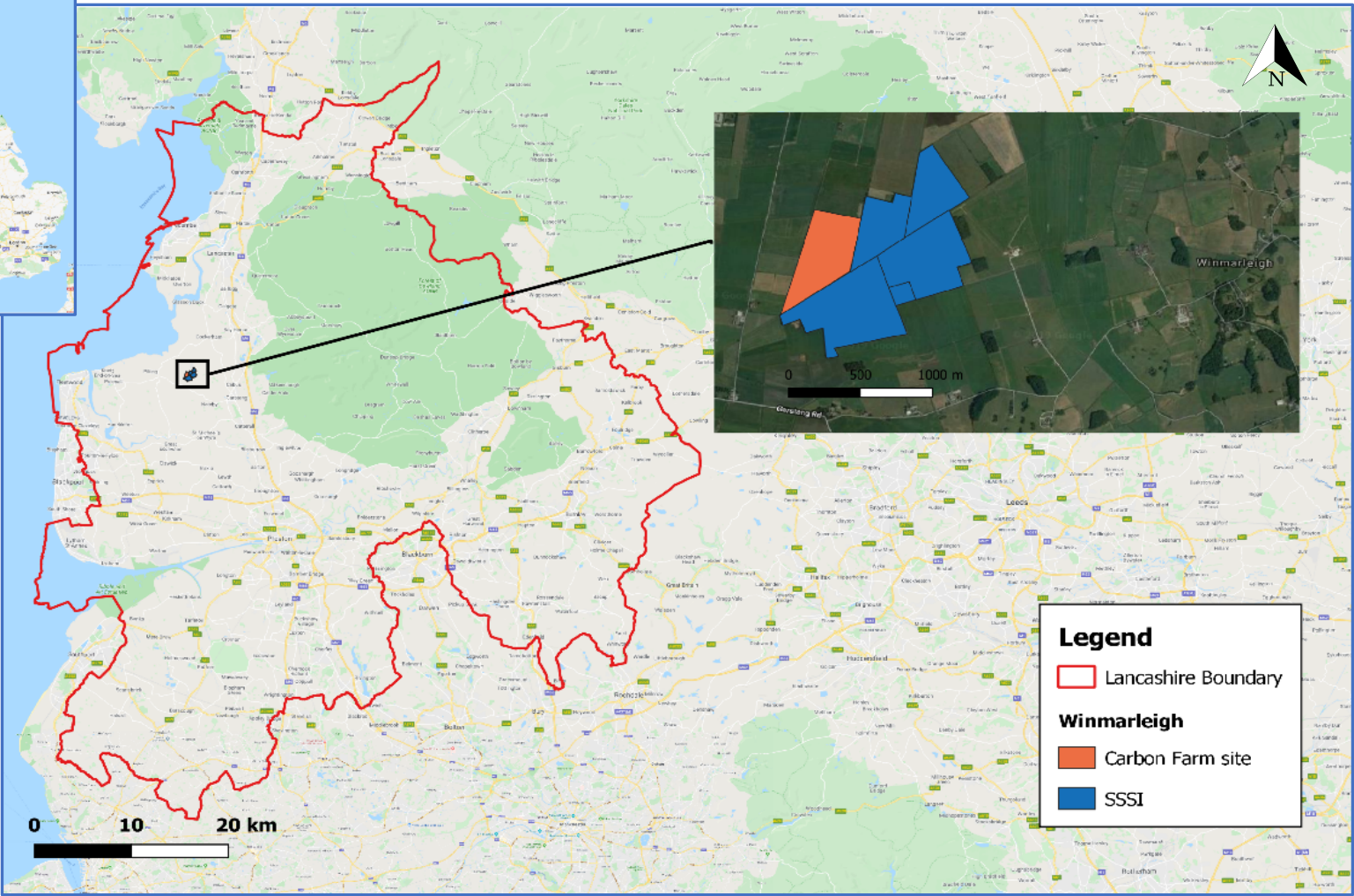
# Care-Peat pilot sites – at each there is a ‘control’ and a restoration pilot






# Winmarleigh Carbon Farm



# Winmarleigh pilot site



**Legend**

-  Lancashire Boundary
- Winmarleigh**
-  Carbon Farm site
-  SSSI

## Carbon Farm objective:

Grow a permanent non-harvested crop of Sphagnum moss for the purpose of storing and protecting carbon in peat soils

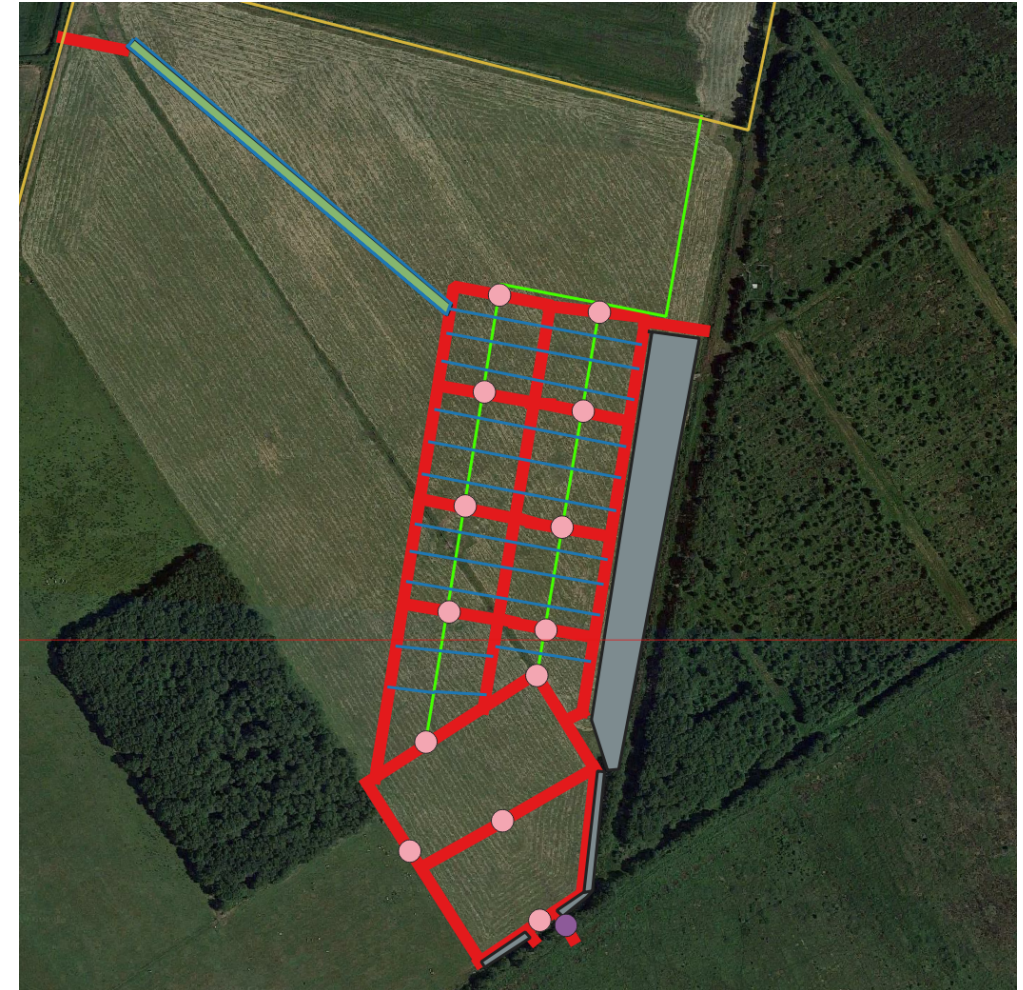


### Investigating:

- ▶ Carbon emission reduction and carbon storage through farmland re-wetting and intensive planting of sphagnum
- ▶ Effect on the SSSI nature reserve through re-wetting of this buffer land
- ▶ Economic viability of alternative land management techniques for peat-based soils.

# Overall design & restoration plan

- ▶ Strip top soil (to remove weed seed and added nutrients)
- ▶ Re-wet farmland by ditch-blocking and bund creation
- ▶ Create water storage areas and irrigation means
- ▶ Plant appropriate *Sphagnum moss* species
- ▶ Monitor CO<sub>2</sub>, C-storage & other GHG emissions on pilot site and control site
- ▶ Monitor effect of re-wetting buffer zone area on the adjoining SSSI





# Groundworks started in May 2020





# Cells and irrigation ditches





Solar panels



Sump area

# Lorentz Solar Surface Pump and bilge pump system



Float control  
valve

# Over 150,000 *Sphagnum* plugs planted



150,000 of these 'plugs' are being planted



# Greenhouse gas monitoring



# Carbon farming – opportunities

- Provide more sustainable systems for farmers that maintain wet conditions, protecting peat soils, reducing CO2 emissions, cleaning water, benefiting wildlife
- Demonstrate to farmers what they can do with poor quality marginal land that could bring them greater revenue in the future
- Contribute to the data UK government needs to develop new funding schemes
- Help to bring in carbon-related revenue for land





**360° video with Dr Chris Field, Manchester Metropolitan University:**

<https://www.youtube.com/watch?v=zc1NXmUrXaQ&feature=youtu.be>



**Carbon Farm video on YouTube:**  
<https://youtu.be/qSPwQKwh-W4>

**Questions?**