



Technology Assessment Process (TAP) – OEE 2020

02/12/2020

Magnus Willett

magnus.willett@ore.catapult.org.uk

Agenda

- Introduction to ORE Catapult
- Technology Development
- What is a TAP?
- Why TAP?
- The OPIN TAP
- Apply for an OPIN TAP

Introduction to ORE Catapult

10

Innovate UK

- Designed to transform the UK's capability for innovation
- Core grant leveraged with industry and other public funding

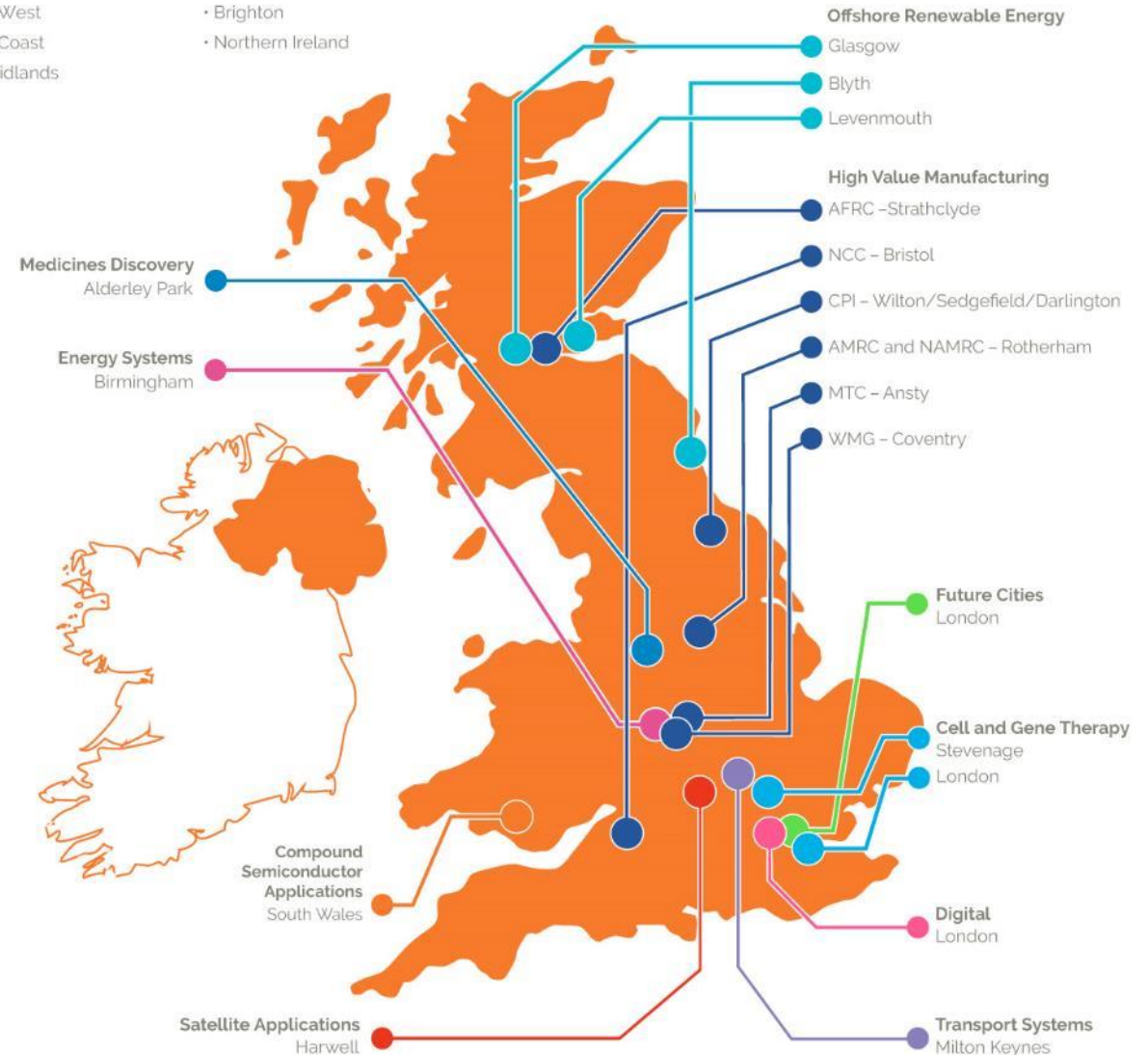
Regional Centres

Satellite Applications

- North East
- Scotland
- South West
- South Coast
- East Midlands

Digital

- North East and Tees Valley
- Yorkshire
- Brighton
- Northern Ireland



Our mission

To accelerate the creation and growth of UK companies in the ORE sector

Our vision

By 2023, ORE Catapult will be the world's leading offshore renewables technology centre

- Centres of Excellence
- Academic Research Hubs in partnership with leading universities
- Expanding our assets in Blyth and Levenmouth the world's foremost open-access facilities



Test & Validation

- Next generation Turbines & Balance of Plant
- Design validation and component testing

Operational Performance

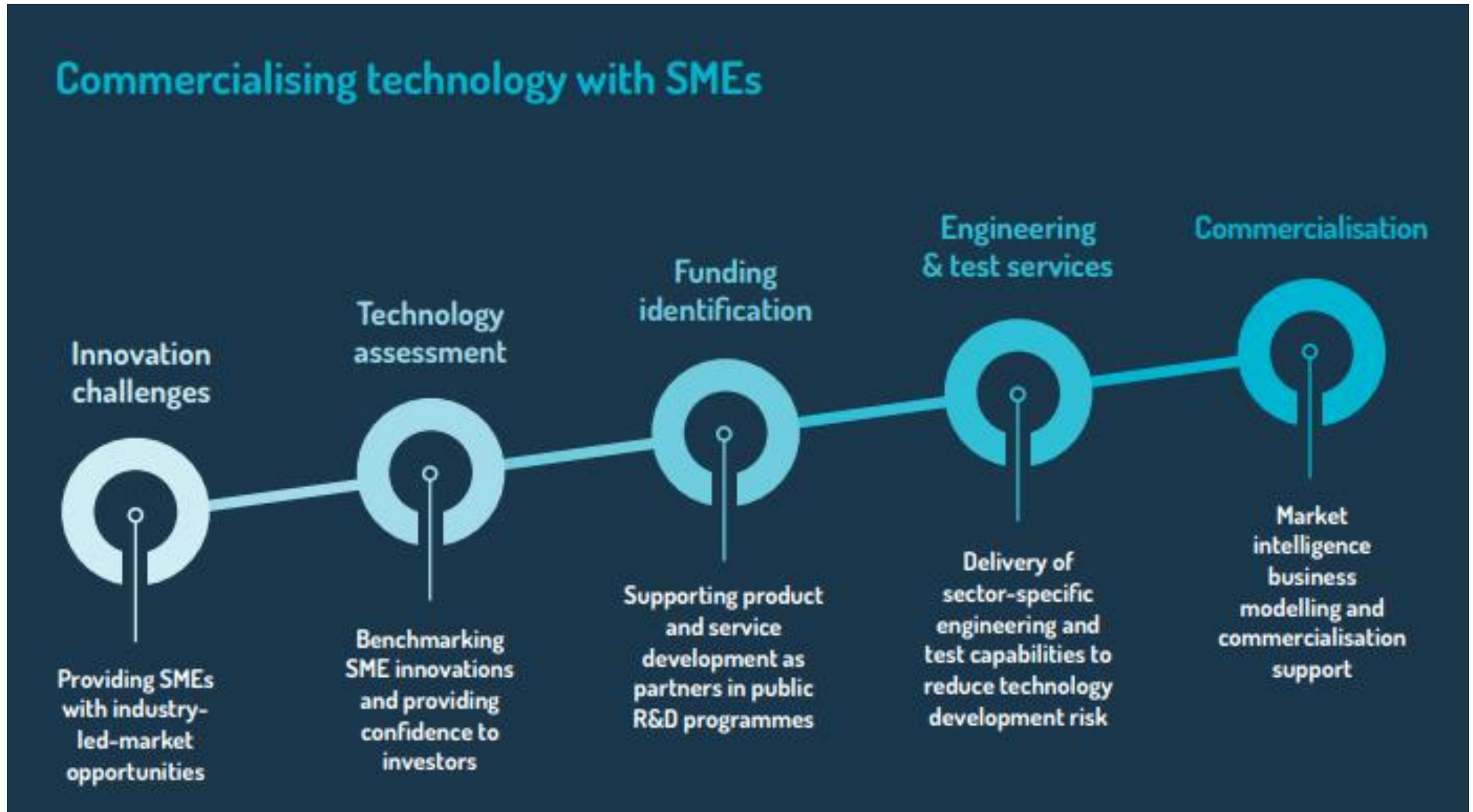
- Better intervention techniques
- Developer/owner solutions
- SMEs developing solutions
- Test & validate solutions
- O&M

Research & Disruptive Innovation

- Evaluation and support for future technologies
- Floating wind, Wave & Tidal
- Under pinning research
- Gateway to UK academia

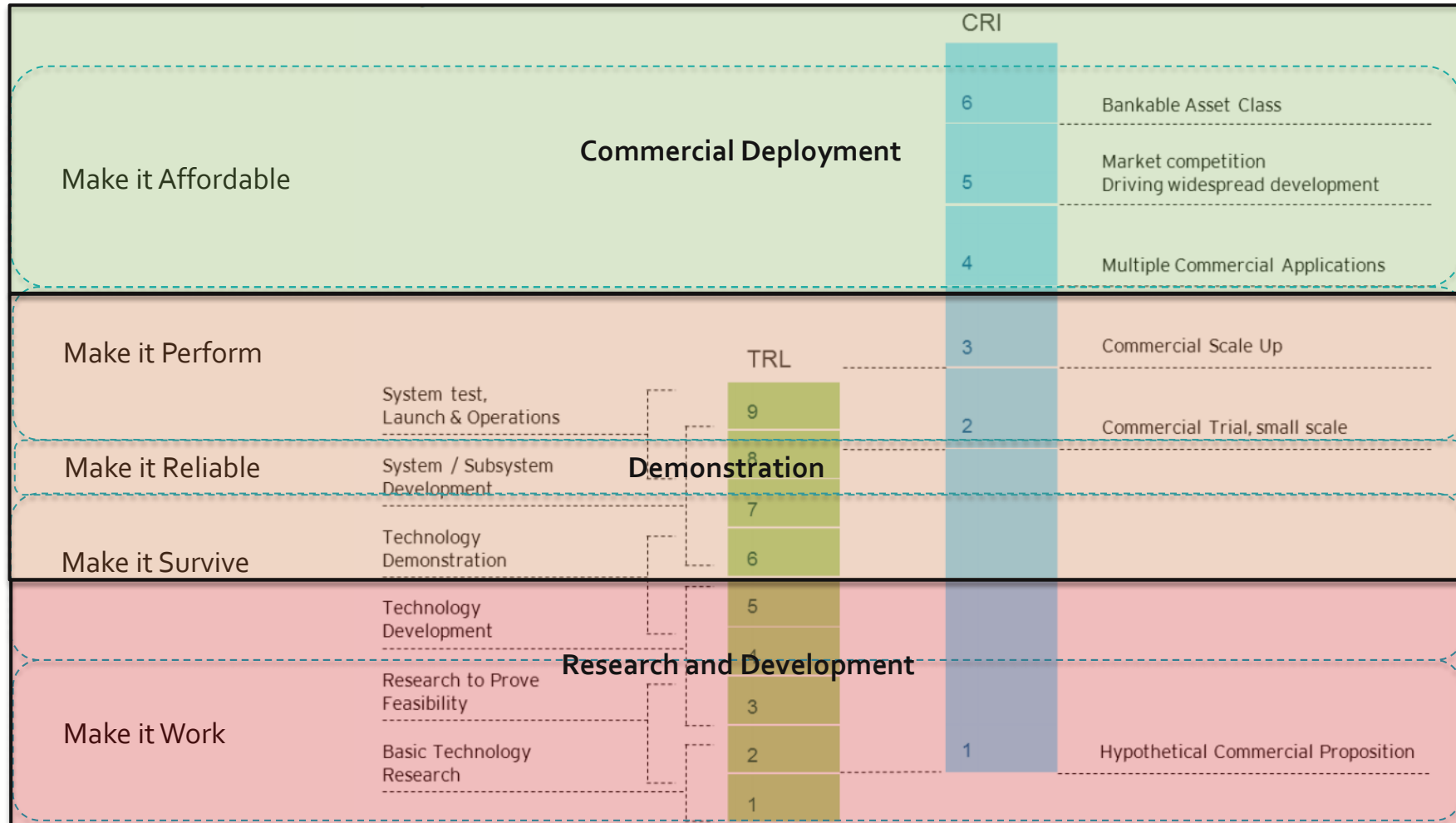
802
Industry
Collaborations

803
SMEs
supported



Technology Development

Technology Development Pathway



Australian Renewable Energy Agency TRL Definition:

What is a TAP?

The TAP



Assessment of new and emerging ocean energy technologies and services



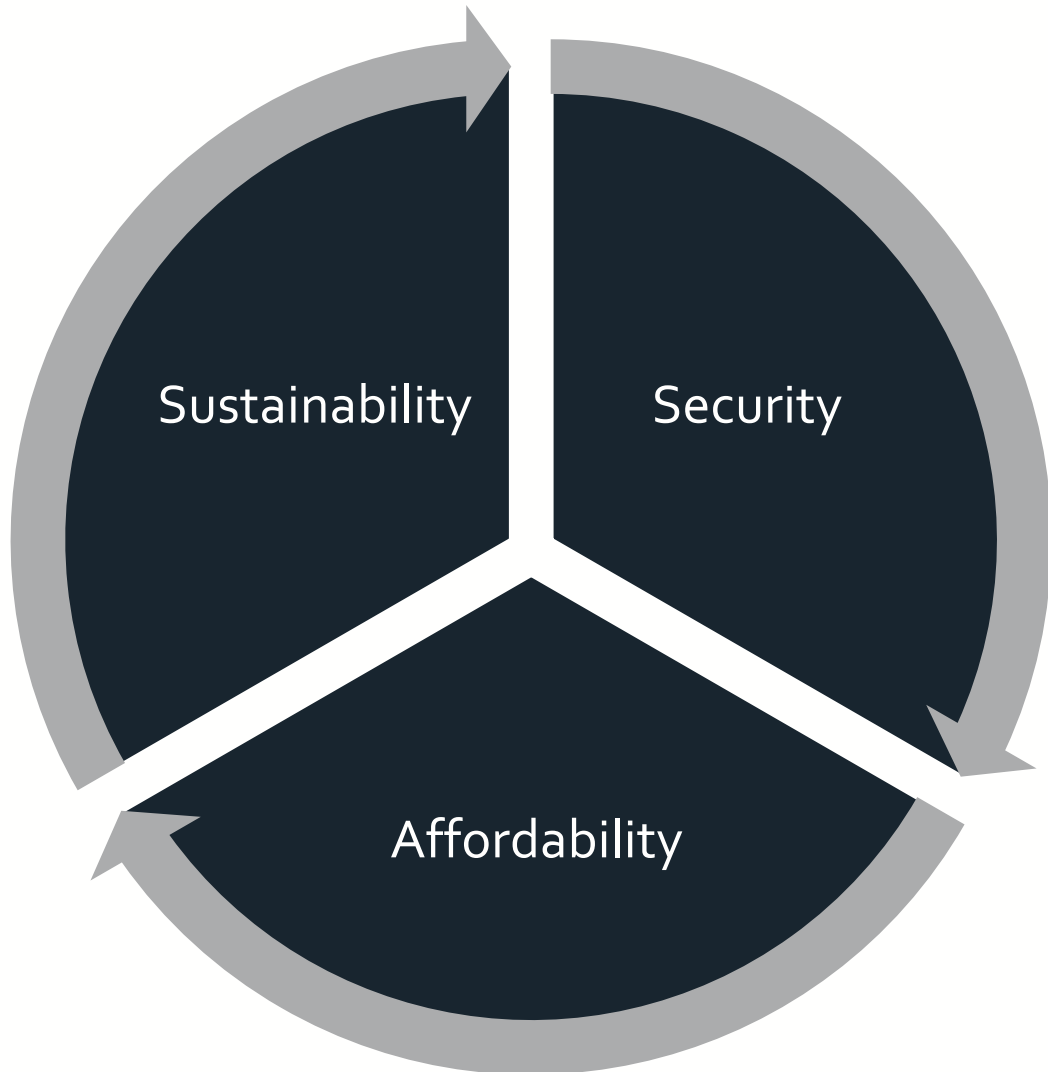
Evidence based Dossier



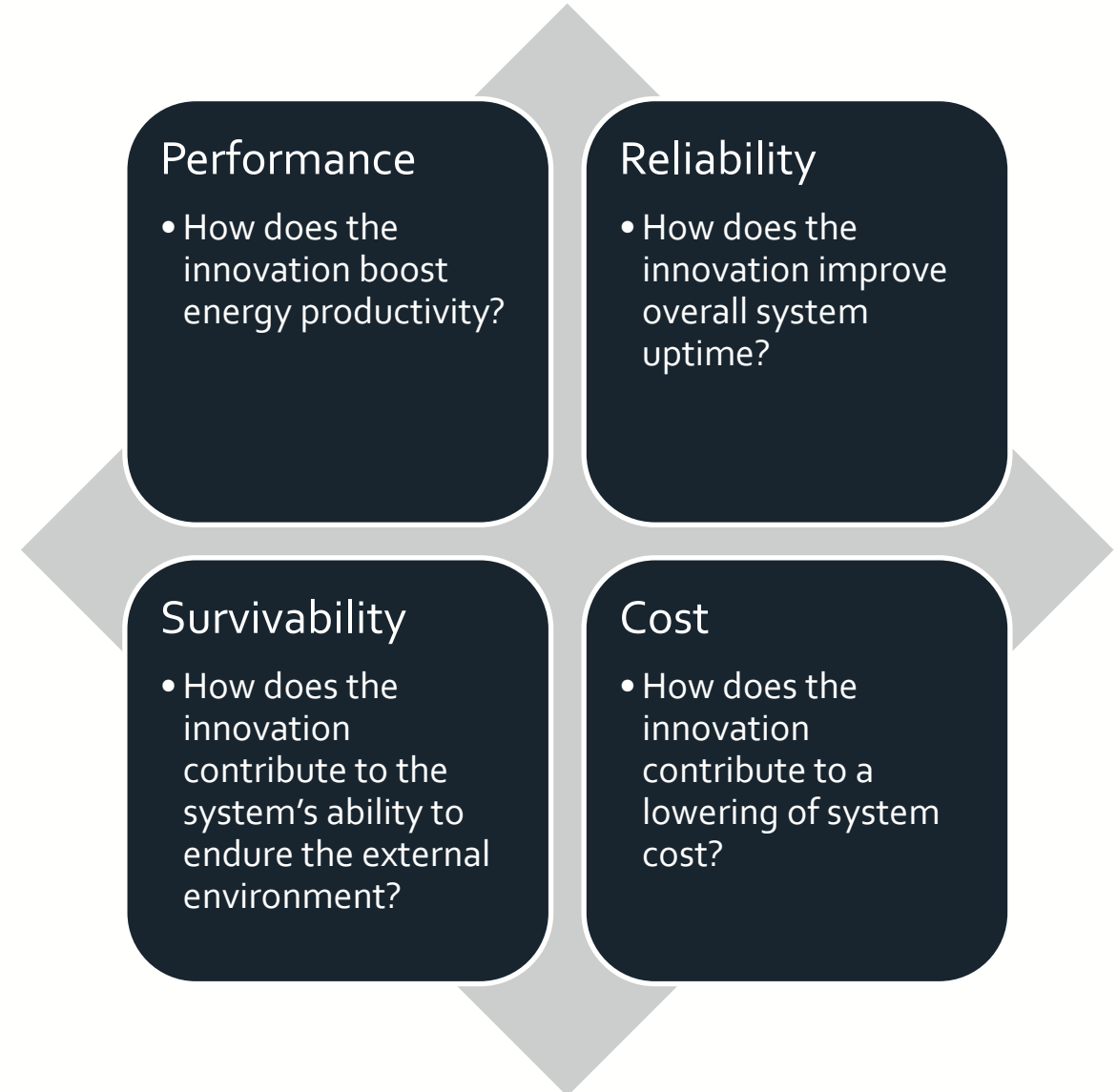
Examination of system, sub-system or component

Why TAP?

Renewable Energy Pillars



Technology Core Characteristics



TAPs provide a consistent, objective, proportionate and structure assessment of technological ideas. The process is designed to realise the following high level benefits

Match Making

- Better matching of capital and other resources to strong technical ideas rather than to ideas that simply have strong marketing

Investment Decisions

- Better informed investment decisions and have improved confidence and reduced risk

Focus

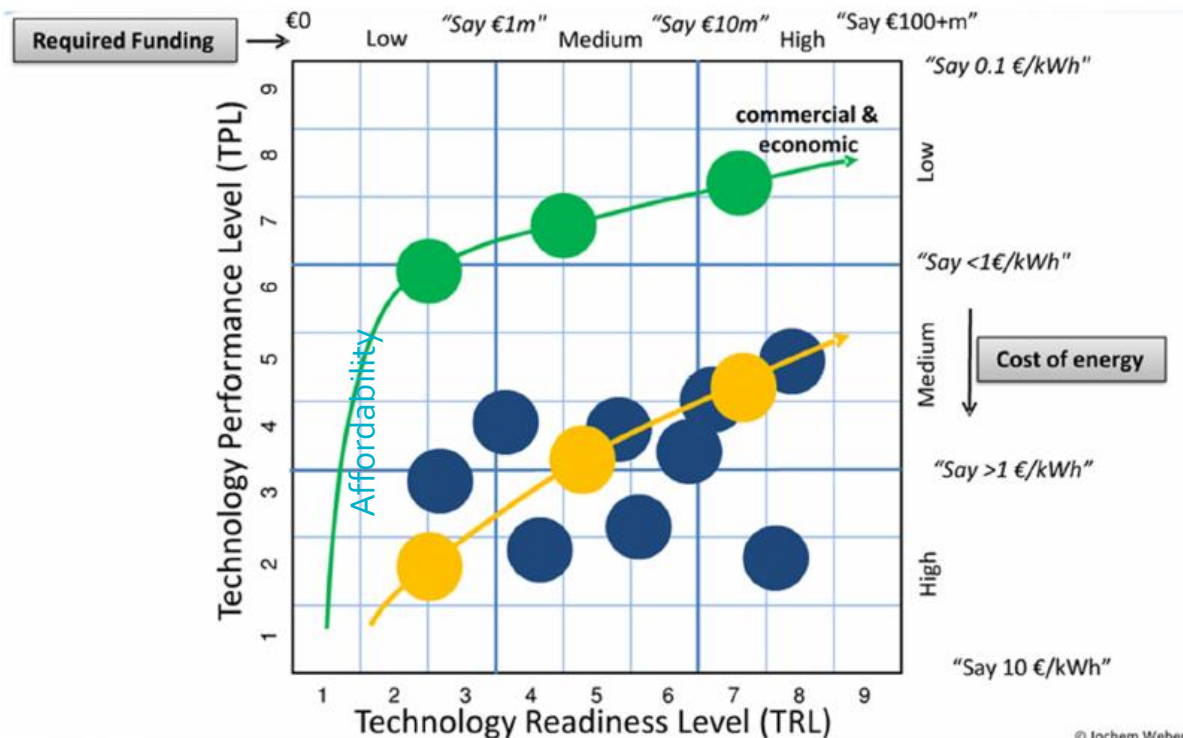
- Improved focus and economic risk management in technology development

Acceleration

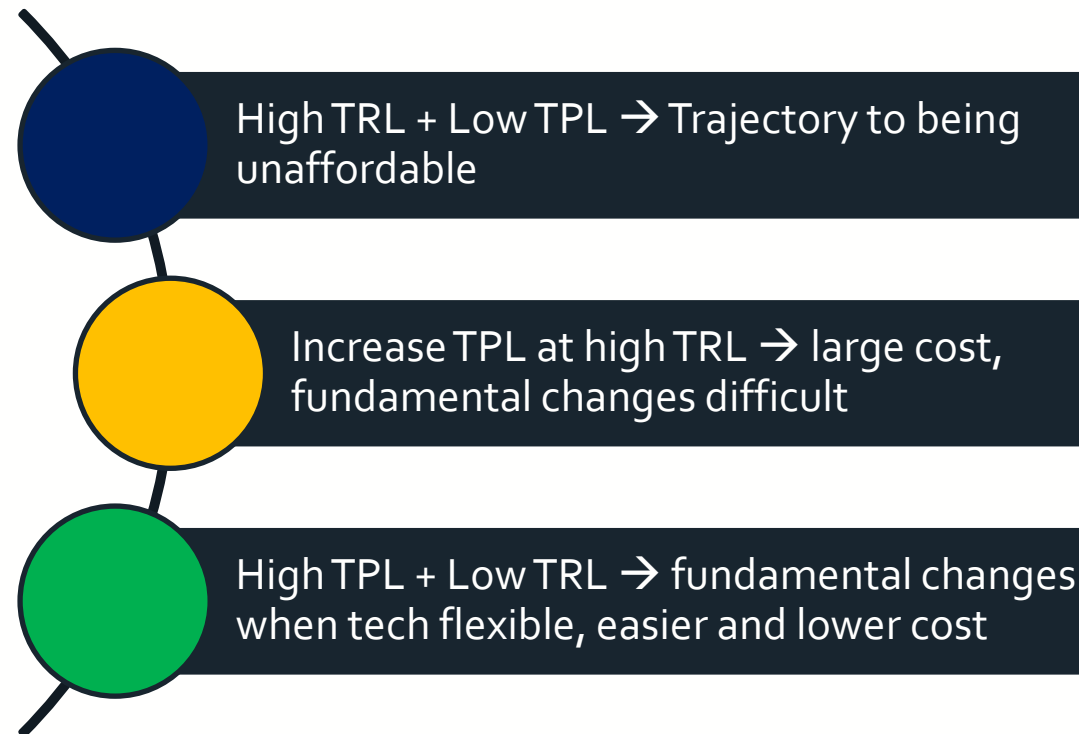
- Acceleration of the renewable energy sector to affordability.

Challenges with Technology Development Pathway

- Technology Performance Level – measure of ability to meet affordability

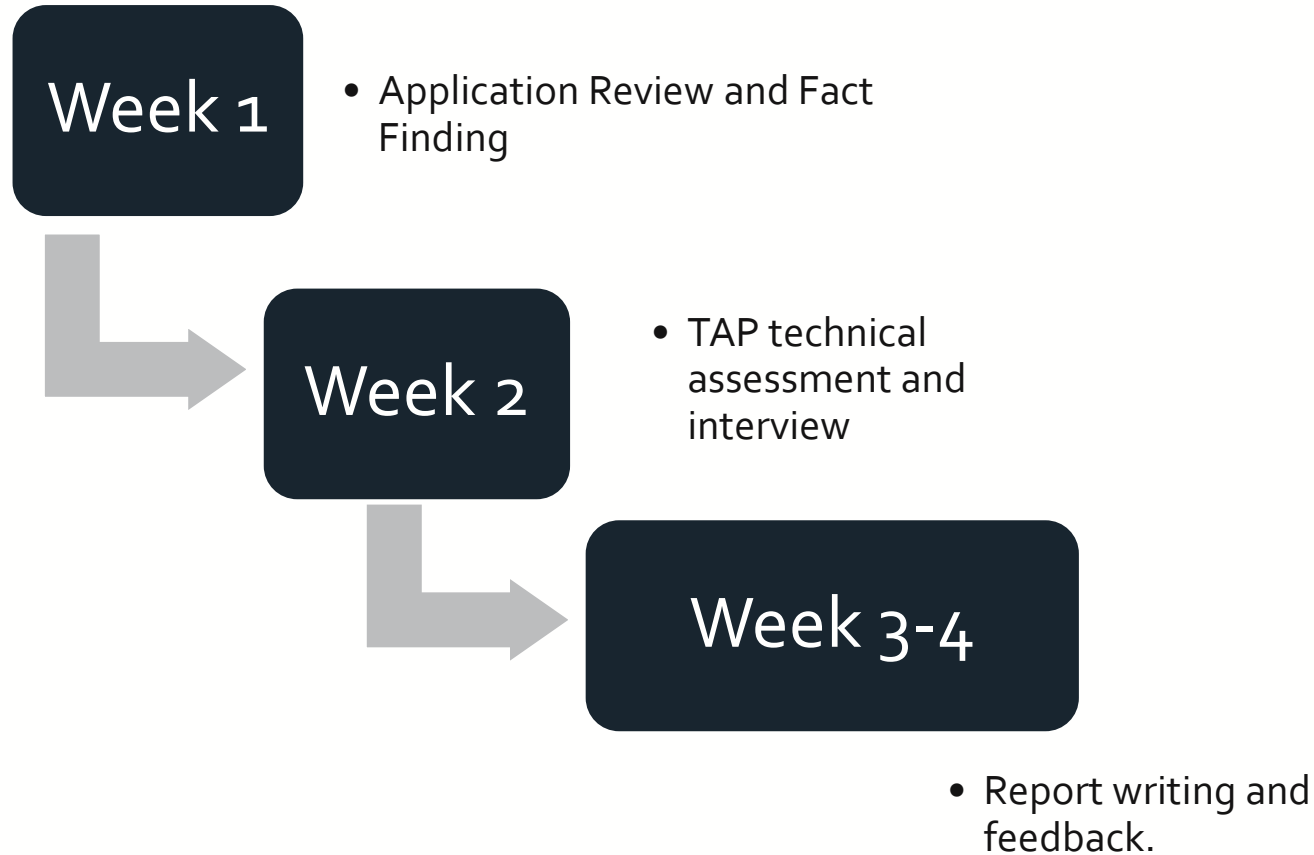


Technical



The OPIN TAP

- As part of the OPIN project, project partners offer a high level assessment of an SMEs technology free.
- As part of the TAP, OPIN partners will discuss:
 - Design principles
 - Opportunities to de-risk onward development
 - Route to commercialisation.
- Transfer of technology from other sectors into ocean energy.
- The value of the Tap is limited to €2,000.



The report generated during the TAP process would consist of the following.

- Methodology
- Technical viability
- Techno-economic competitive prospects
- The technology development route map and its progression targets
- References – list of evidence provided

Applying for a TAP

- Evaluation Criteria
 - Strength of the Scientific/Technical Approach
 - Ability to competently carry out the project/development
 - Impact
- Application forms can be found [here](#).
- Application forms should be sent to OPIN@seai.ie
- Guidelines for applications can be found [here](#).
- TAPs are funded by Inter-Reg North West Europe up to a value of €2,000

Contact us

GLASGOW

Inovo

121 George Street
Glasgow
G1 1RD

T +44 (0)333 004 1400



BLYTH

National Renewable

Energy Centre
Offshore House
Albert Street
Blyth, Northumberland
NE24 1LZ

T +44 (0)1670 359 555



LEVENMOUTH

Fife Renewables

Innovation Centre (FRIC)
Ajax Way
Leven
KY8 3RS

T +44 (0)1670 359 555



HULL

O&M Centre of Excellence

Ergo Centre
Bridgehead Business Park
Meadow Road, Hessle
HU13 0GD

