

TITLE:

GLOBAL ISSUES

Research Demands

IR. HENRI VAN BENNEKOM

DELFT UNIVERSITY OF TECHNOLOGY





GLOBAL ISSUES RECYCLING

IR. HENRI VAN BENNEKOM

DELFT UNIVERSITY OF TECHNOLOGY





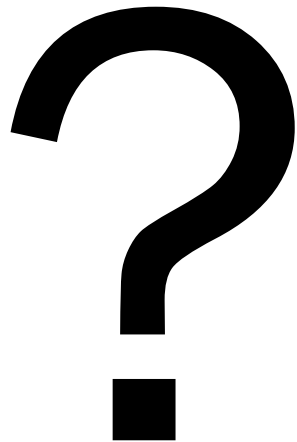
Replace Primary Raw Materials of Concrete Precast Products



Replace Primary Raw Materials
of Concrete Precast Products
With high-quality Materials from
Re-cycled Construction Demolition Waste



- Develop new, innovative prefab concrete products
- With EU market potential
- Show opportunities for recycled CDW material



- OPTIMAL RE-CYCLING OF CDW CAN CONTRIBUTE TO MAX. 20% OF THE TOTAL DEMAND OF CONCRETE PRODUCTION.

- OPTIMAL RE-CYCLING OF CDW CAN CONTRIBUTE TO MAX. 20% OF THE TOTAL DEMAND OF CONCRETE PRODUCTION.
- NEWLY DEVELOPED TECHNIQUES ALLOW FOR THE COMPARABLE QUALITY OF CONCRETE PRODUCTS FROM CDW

- OPTIMAL RE-CYCLING OF CDW CAN CONTRIBUTE TO MAX. 20% OF THE TOTAL DEMAND OF CONCRETE PRODUCTION.
- NEWLY DEVELOPED TECHNIQUES ALLOW FOR THE COMPARABLE QUALITY OF CONCRETE PRODUCTS FROM CDW
- HOWEVER, RECYCLING INTO CONCRETE PREFAB PRODUCTS STILL HAS ENVIRONMENTAL IMPACT REGARDING ENERGY CO2 AND HEALTH

- OPTIMAL RE-CYCLING OF CDW CAN CONTRIBUTE TO MAX. 20% OF THE TOTAL DEMAND OF CONCRETE PRODUCTION.
- NEWLY DEVELOPED TECHNIQUES ALLOW FOR THE COMPARABLE QUALITY OF CONCRETE PRODUCTS FROM CDW
- HOWEVER, RECYCLING INTO CONCRETE PREFAB PRODUCTS STILL HAS ENVIRONMENTAL IMPACT REGARDING ENERGY CO2 AND HEALTH
- WORLD IS UNDER THREATS OF CLIMATE CHANGE AND OTHER GLOBAL ISSUES

Impacts of production





Peak oil

Energy crisis

Fossil fuel dependence



CO₂

Global warming

Sea level rise





© Ian Wylie/Foundation for Deep Ecology



Deforestation

Overexploited fisheries

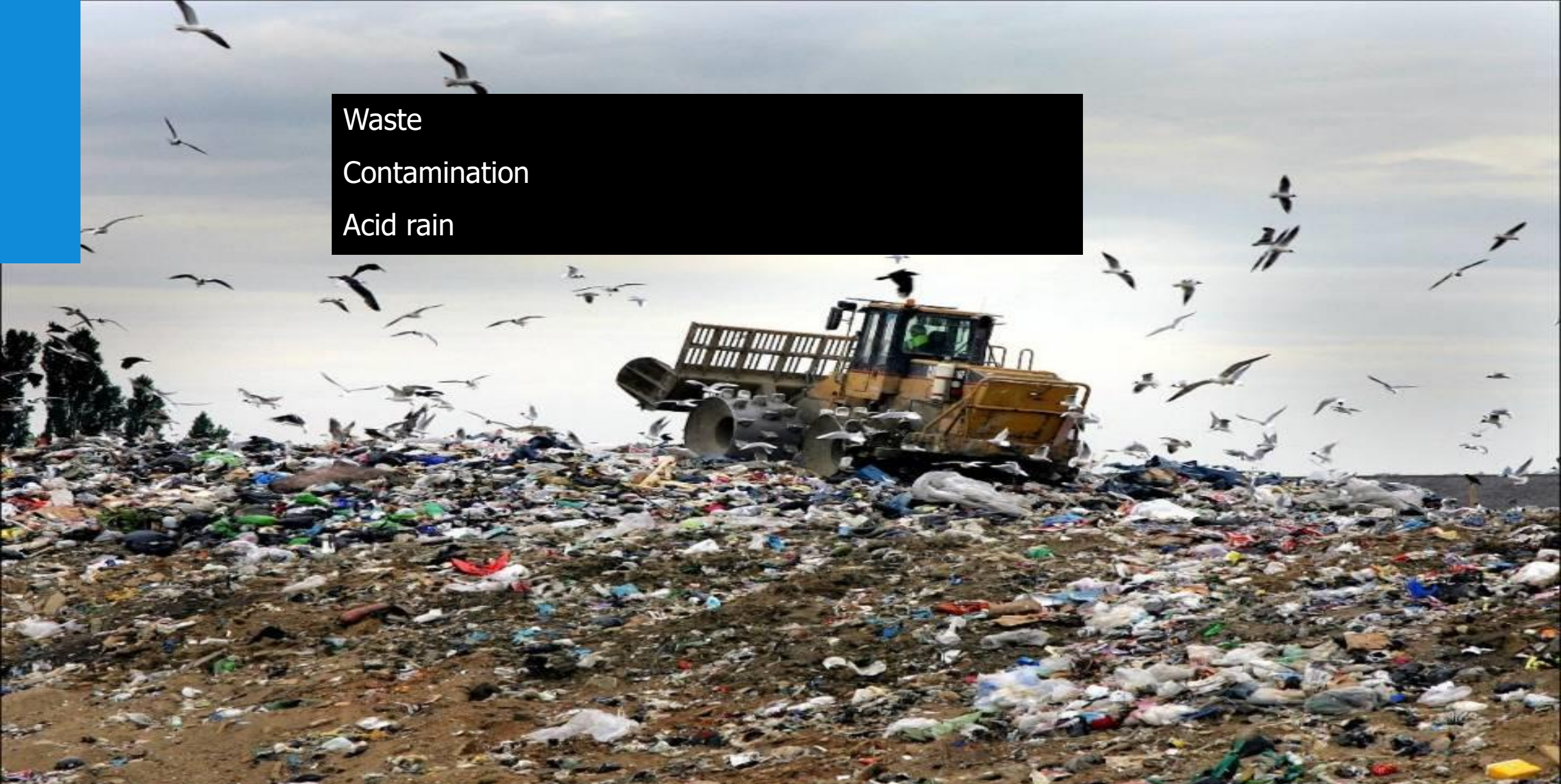
Extinction of species





© Mark Gamba/Corbis; Foundation for Deep Ecology

Waste
Contamination
Acid rain







© Chris Jordan/Foundation for Deep Ecology



**Waste...
We throw used items away.
But, where is 'away'?**

© Peter Essick/Foundation for Deep Ecology



There is no such thing as away!



© Cotton Coulson/Keenpress/Foundation for Deep Ecology





© Master Sgt Bill Huntington







© Zak Noyle/Foundation for Deep Ecology



© M.R. Hasasn/Foundation for Deep Ecology

Waste...

We throw used items away.

But, where is 'away'?

There is no such thing as away!



© M.R. Hasasn/Foundation for Deep Ecology



Is this the world we want to give to **our children?**



Is this the world we want to give to **ourselves...!?**





Resource Depletion

An aerial photograph of London, England, showing a dense urban landscape with numerous skyscrapers and buildings. The River Thames flows through the center, with several bridges crossing it. The entire scene is shrouded in a thick, grey haze, illustrating air pollution. The text 'Air Pollution' is overlaid in the center in a large, white, sans-serif font.

Air Pollution



Chemical pollution



Fresh Water Scarcity

2017

2018



Biodiversity Loss



Climate Change

- OPTIMAL RE-CYCLING OF CDW CAN CONTRIBUTE TO MAX. 20% OF THE TOTAL DEMAND OF CONCRETE PRODUCTION.
- NEWLY DEVELOPED TECHNIQUES ALLOW FOR THE COMPARABLE QUALITY OF CONCRETE PRODUCTS FROM CDW
- HOWEVER, RECYCLING INTO CONCRETE PREFAB PRODUCTS STILL HAS ENVIRONMENTAL IMPACT REGARDING ENERGY CO2 AND HEALTH
- **WORLD IS UNDER THREATS OF CLIMATE CHANGE AND OTHER GLOBAL ISSUES**

P

$$M + E = P$$

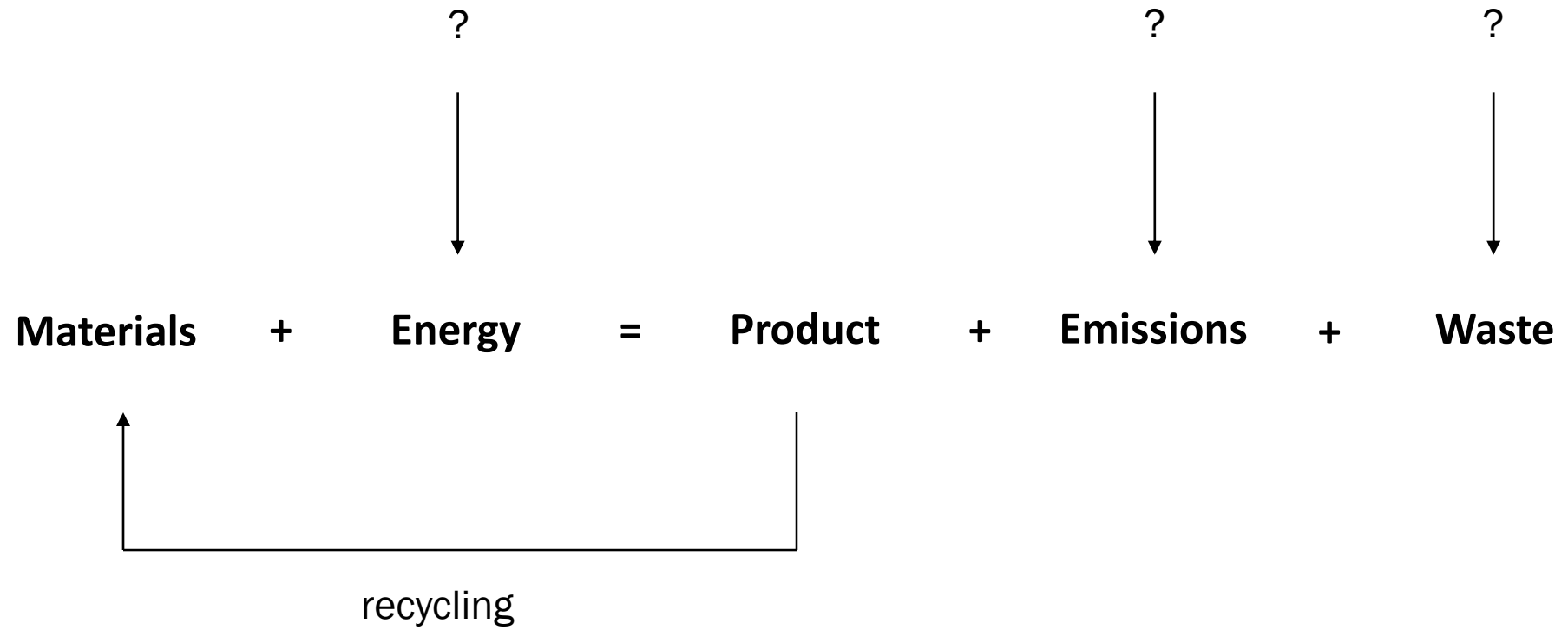
$$M + E = P + E + W$$

$$\text{Materials} + \text{Energy} = \text{Product} + \text{Emissions} + \text{Waste}$$

Materials + Energy = Product + Emissions + Waste



recycling



Re-cycling is one of the answers to the problem of resources and waste,

but not to other threats caused by production or the re-cycling process.

Would it be possible to come up with products that try to cover these climate threats as well?

Take Global Climate Issues as Design Parameter !

- TO TAKE RESPONSIBILITY FOR THE DAMAGING IMPACT THAT PRODUCTION AND USE IN GENERAL HAS CAUSED AND WILL CAUSE

- WE NEED TO TAKE RESPONSIBILITY FOR THE DAMAGING IMPACT THAT PRODUCTION AND USE IN GENERAL HAS CAUSED AND WILL CAUSE
- OUR COMMON TASK AND MORAL OBLIGATION SHOULD THEREFORE GO BEYOND MERELY USING SECONDARY RAW MATERIALS FOR CONCRETE

- WE NEED TO TAKE RESPONSIBILITY FOR THE DAMAGING IMPACT THAT PRODUCTION AND USE IN GENERAL HAS CAUSED AND WILL CAUSE
- OUR COMMON TASK AND MORAL OBLIGATION SHOULD THEREFORE GO BEYOND MERELY USING SECONDARY RAW MATERIALS FOR CONCRETE
- THIS IMPLIES THAT OUR DESIGNS NEED TO REPAIR THE INTRINSIC DAMAGE THAT THEIR PRODUCTION CAUSE TO THE EARTH, AND TO US...

Direct/Indirect Impact Built Environment

50-70%

of global resource extraction, mainly sand, cement & steel ¹

38%

of global Green House Gas emissions ²

40%

of global energy consumption ²

50%

of global landfill waste ¹

40%

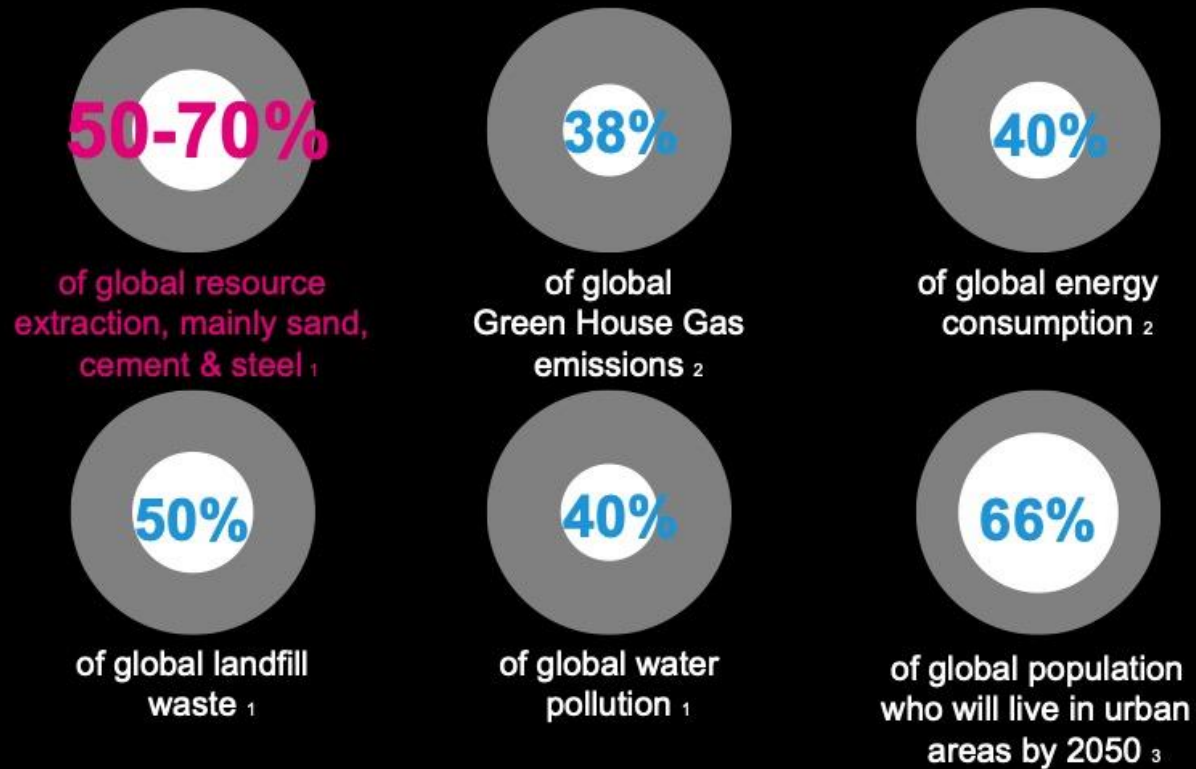
of global water pollution ¹

66%

of global population who will live in urban areas by 2050 ³

- 1. Willmott Dixon 2010
- 2. Global Assessment Report on Disaster Risk Reduction 2015
- 3. World Bank 2015

Direct/Indirect Impact Built Environment



1. Willmott Dixon 2010
2. Global Assessment Report on Disaster Risk Reduction 2015
3. World Bank 2015

Direct/Indirect Impact Built Environment



of global resource extraction, mainly sand, cement & steel ¹



of global Green House Gas emissions ²



of global energy consumption ²



of global landfill waste ¹



of global water pollution ¹



of global population who will live in urban areas by 2050 ³

1. Willmott Dixon 2010
2. Global Assessment Report on Disaster Risk Reduction 2015
3. World Bank 2015

Direct/Indirect Impact Built Environment



of global resource extraction, mainly sand, cement & steel ¹



of global Green House Gas emissions ²



of global energy consumption ²



of global landfill waste ¹



of global water pollution ¹



of global population who will live in urban areas by 2050 ³

1. Willmott Dixon 2010
2. Global Assessment Report on Disaster Risk Reduction 2015
3. World Bank 2015

Direct/Indirect Impact Built Environment



of global resource extraction, mainly sand, cement & steel ¹



of global Green House Gas emissions ²



of global energy consumption ²



of global landfill waste ¹



of global water pollution ¹



of global population who will live in urban areas by 2050 ³

1. Willmott Dixon 2010
2. Global Assessment Report on Disaster Risk Reduction 2015
3. World Bank 2015

Direct/Indirect Impact Built Environment



of global resource extraction, mainly sand, cement & steel ¹



of global Green House Gas emissions ²



of global energy consumption ²



of global landfill waste ¹



of global water pollution ¹



of global population who will live in urban areas by 2050 ³

1. Willmott Dixon 2010
2. Global Assessment Report on Disaster Risk Reduction 2015
3. World Bank 2015

Direct/Indirect Impact Built Environment



of global resource extraction, mainly sand, cement & steel ¹



of global Green House Gas emissions ²



of global energy consumption ²



of global landfill waste ¹



of global water pollution ¹

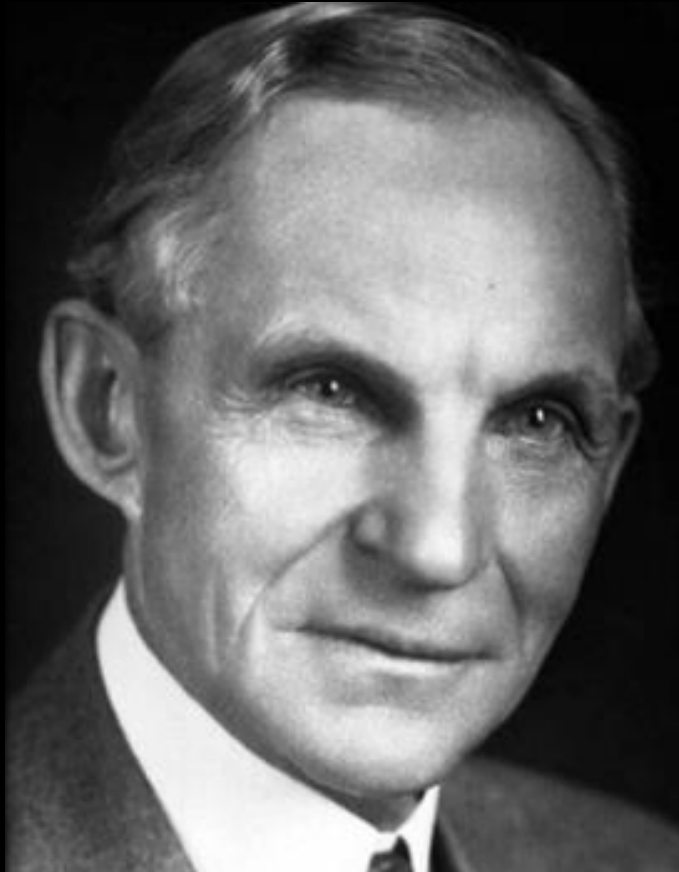


of global population who will live in urban areas by 2050 ³

1. Willmott Dixon 2010
2. Global Assessment Report on Disaster Risk Reduction 2015
3. World Bank 2015

design parameters for products:

- ✓ **Absorb CO₂**
- ✓ **Generate Energy**
- ✓ **Store Energy**
- ✓ **Clean or Retain water**
- ✓ **Clean the Air**
- ✓ **Cool our Cities**
- ✓ **Respect natural resources**
- ✓ **Improve biodiversity**
- ✓ **Last longer**



If I had asked people what they
wanted, they would have said faster
horses....

Henry Ford

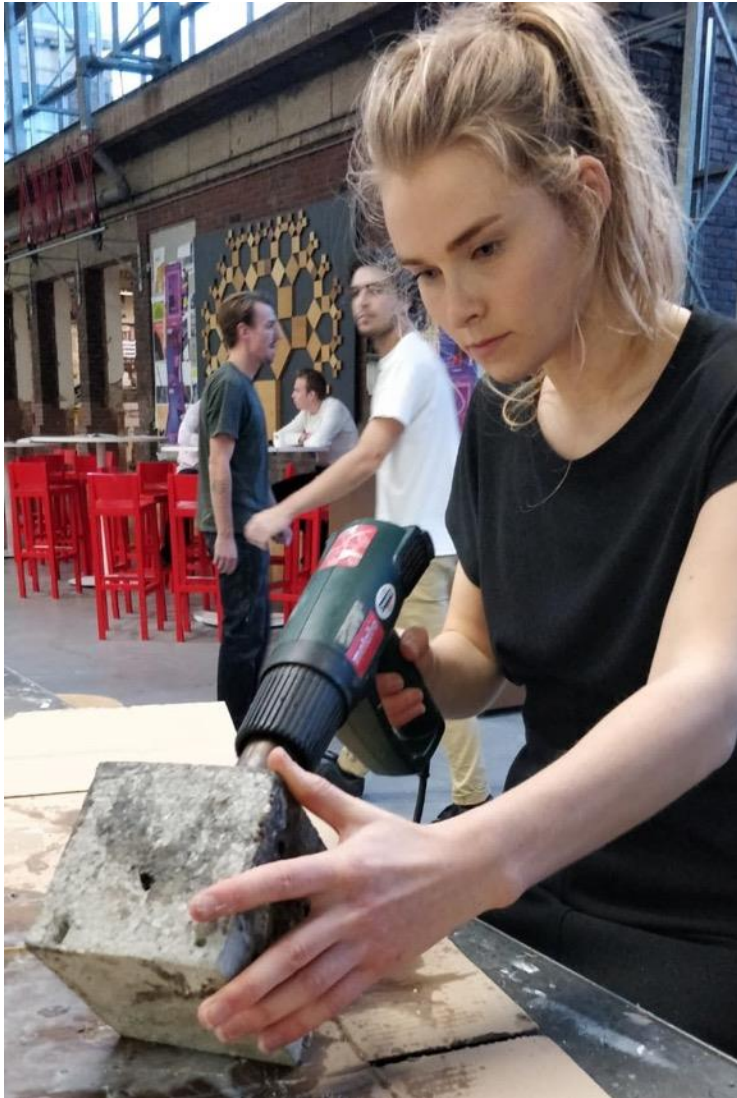


GLOBAL ISSUES BEYOND RECYCLING

IR. HENRI VAN BENNEKOM

DELFT UNIVERSITY OF TECHNOLOGY

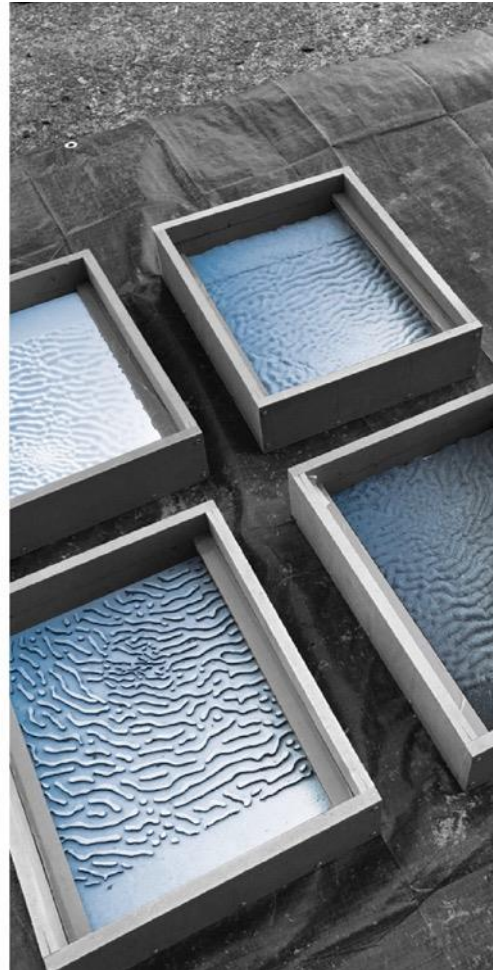




RESEARCH



DESIGN



HANDS-ON



SUSTAINABLE PRODUCTS

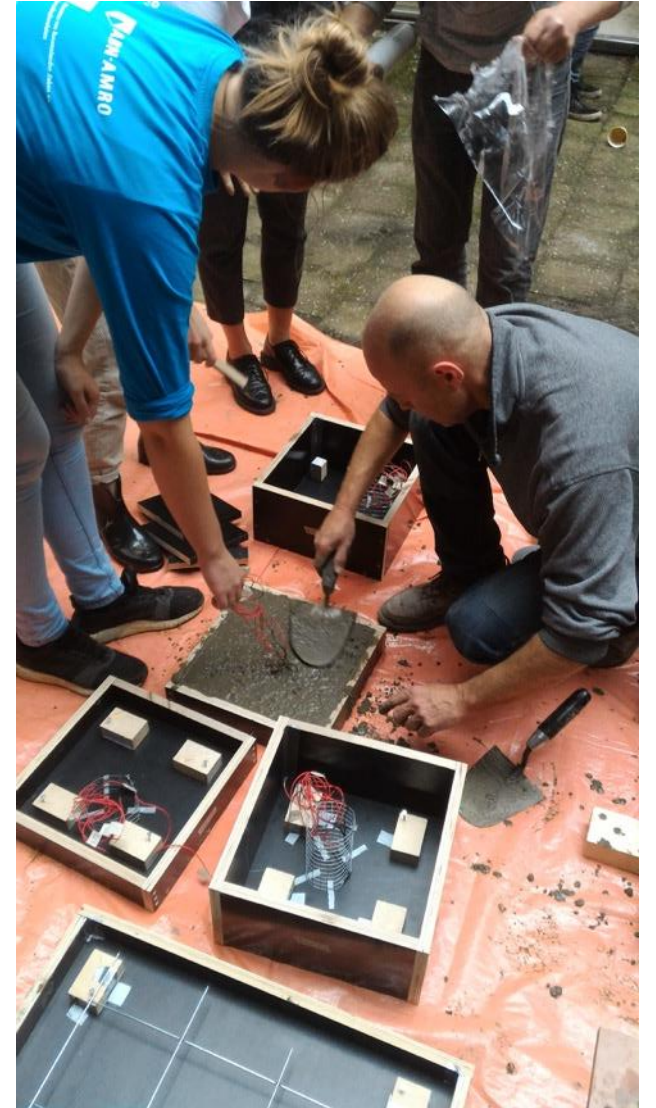


+

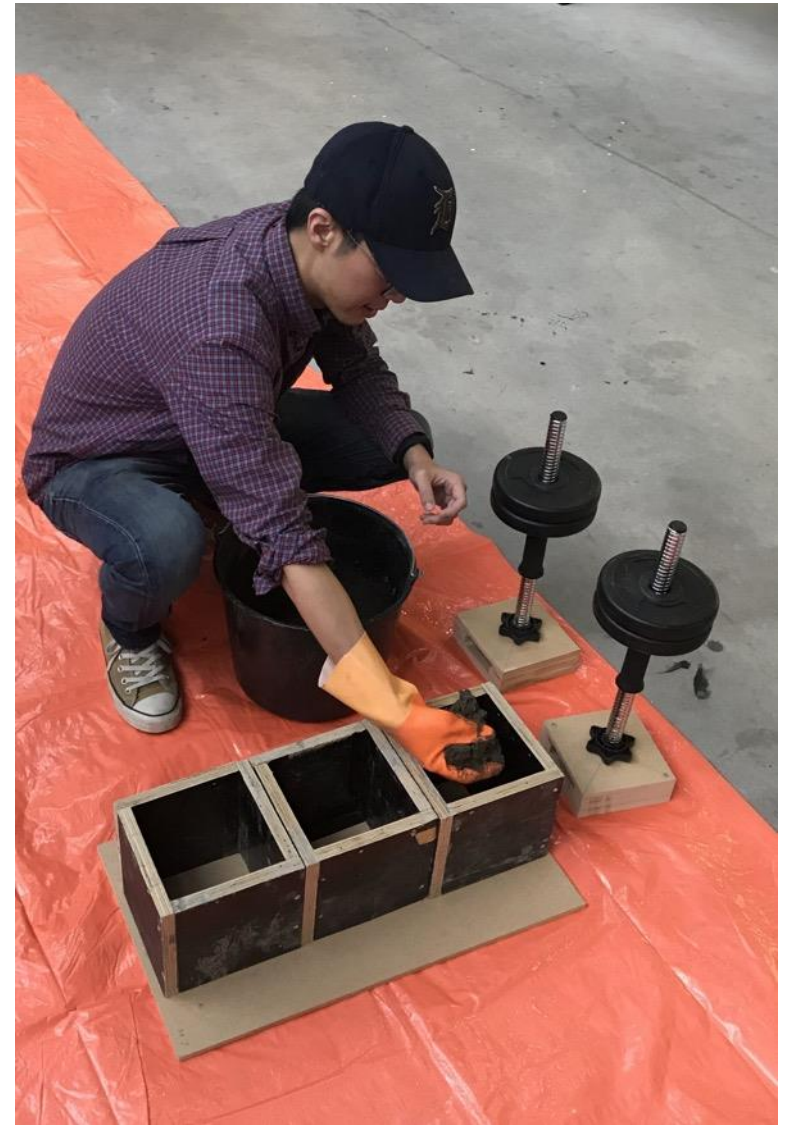
+

=

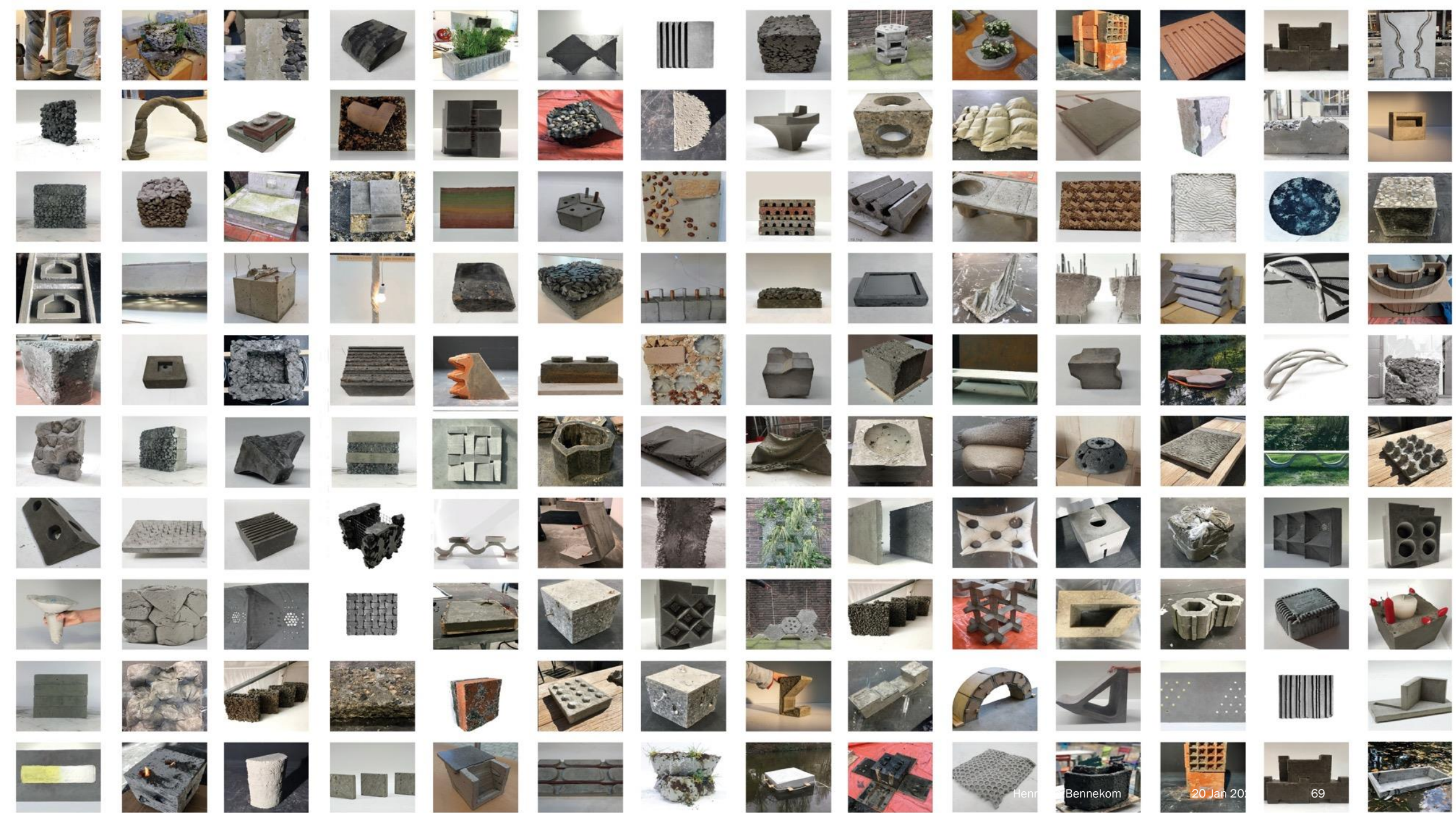
10 weeks











24 PROMISING PROPOSALS

THE OBVIOUS



URBAN FURNITURE



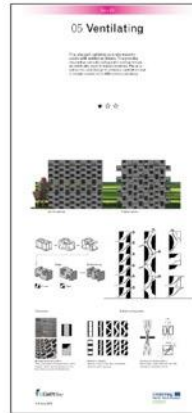
SAVING CDW



LIVING CONCRETE



VENTILATING CONCRETE



RETRO-FITTING



BOULDERING CONCRETE



STRUCTURAL PLANTER



PREFAB INFRA



SOAKING CONCRETE



SOUND ABSORBING



SOUND RESONATING



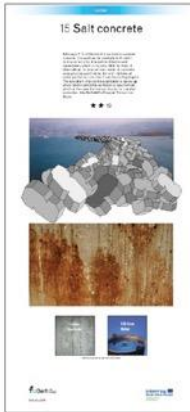
DOUBLE SIDED PAVER



REEF BLOCK



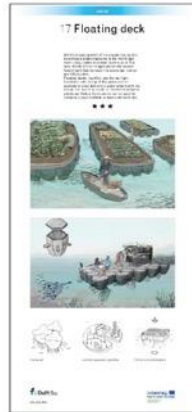
SALTY CONCRETE



FINE PAVING



FLOATING DECK



COOLING CONCRETE



ENERGY HARVESTING



STORING ENERGY



DUST ABSORBING



FLOATING CONCRETE

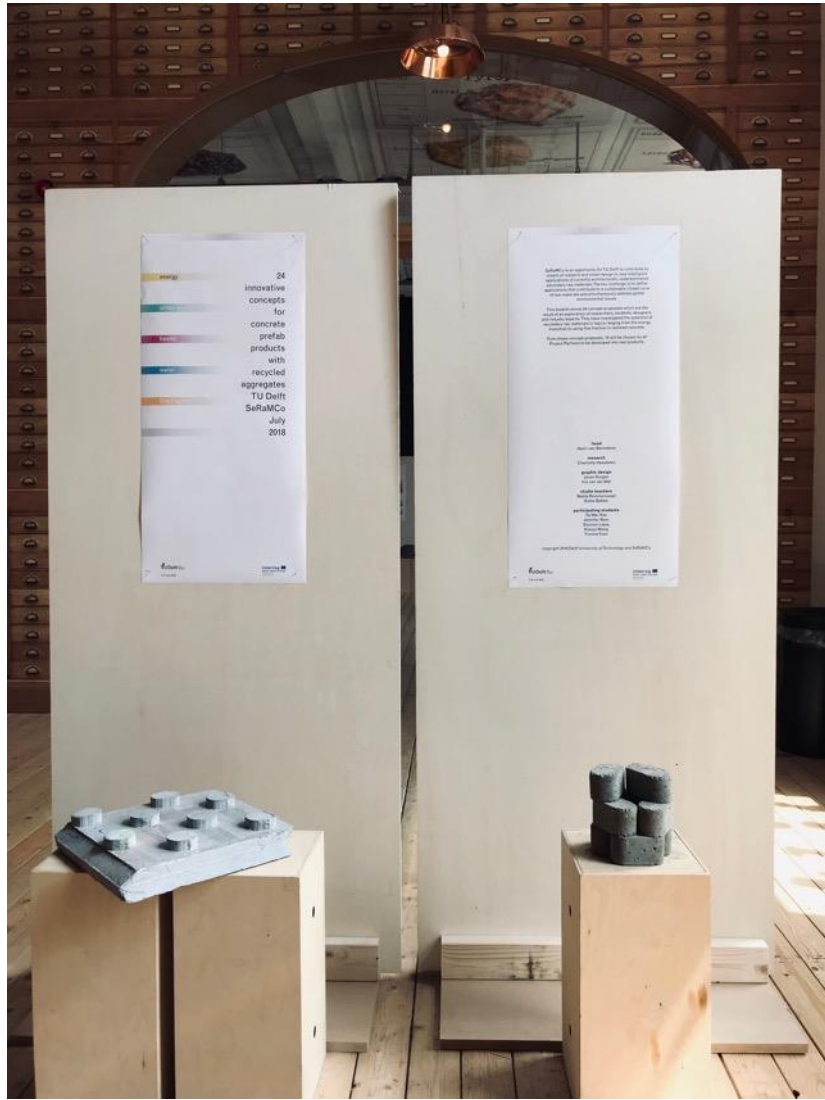


RAMMED CONCRETE

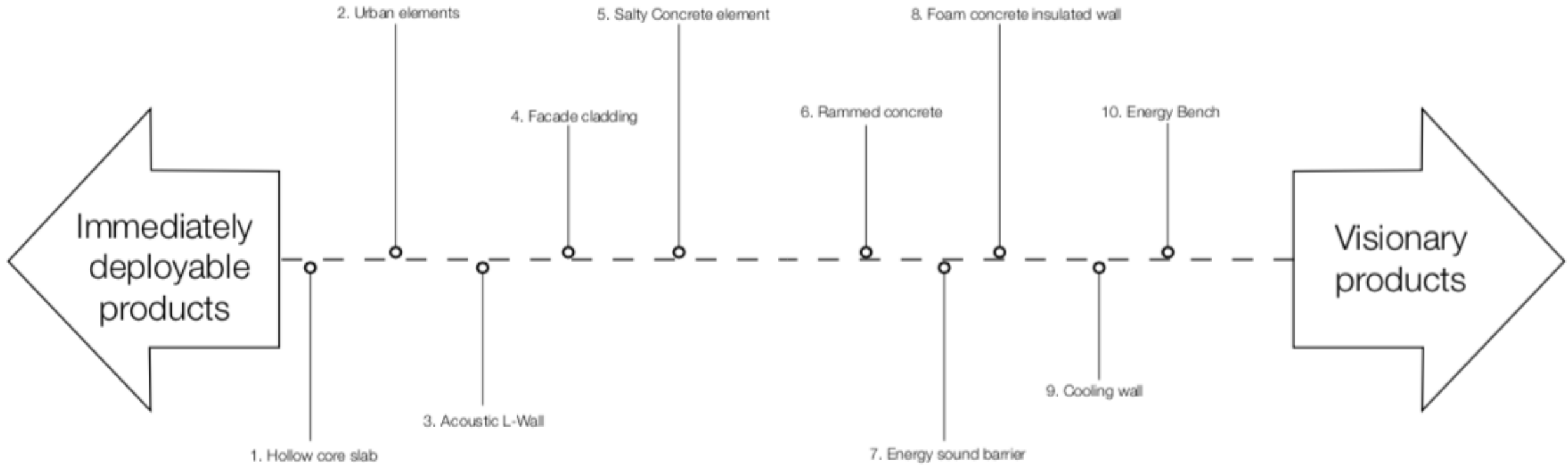


MYCELIUM CONCRETE



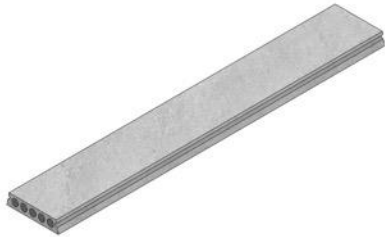






10 CONCRETE PRECAST PRODUCTS

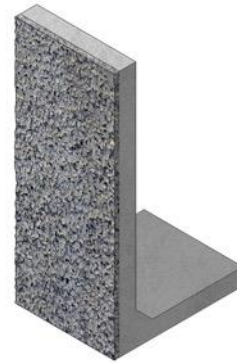
1. HOLLOW
CORE SLAB



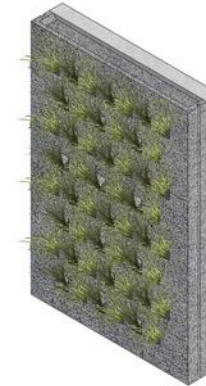
2. URBAN
ELEMENTS



3. ACOUSTIC
L-WALL



4. FAÇADE
CLADDING



5. SALTY
CONCRETE



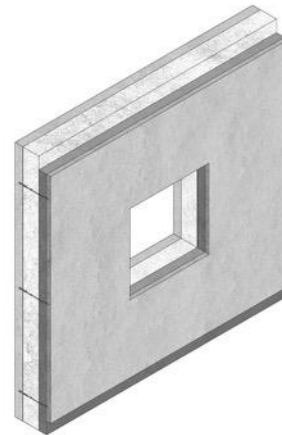
6. RAMMED
CONCRETE



7. ENERGY SOUND
BARRIER



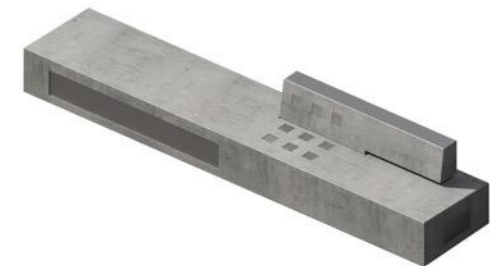
8. FOAM CONCRETE
INSULATED WALL



9. COOLING
WALL



10. ENERGY
BENCH



A black and white close-up portrait of Albert Einstein. He is looking slightly to the left of the camera with a thoughtful expression. His hands are clasped together in front of him, with fingers interlaced. He has his characteristic wild, white hair and a mustache. The lighting is dramatic, highlighting the texture of his skin and the details of his hands.

WE CANNOT SOLVE OUR PROBLEMS
WITH THE SAME THINKING
WE USED WHEN WE
CREATED THEM

-Albert Einstein



The building industry has the power to become a driver of change, that will also impact other fields

IR. HENRI VAN BENNEKOM

DELFT UNIVERSITY OF TECHNOLOGY





THANK YOU

Take Global Climate Issues as Design Parameters for products...

...because recycling is one action to battle global depletion of resources or scarcity, but does not provide solutions for other global issues.

Research → Vaccin

against global warming and environmental catastrophe