

The need for stronger collaboration in urban lighting

Mark Burton-Page
General Director, LUCI Association

Sustainability of smart urban lighting.

Energy Efficiency

Digitalisation

Better responding to needs of citizens

Services that add value to the Community



No one light fits all.

Exploring City Nightscapes



- Explore the different approaches to developing city nightscapes worldwide
- Serve as a source of inspiration for other cities and urban lighting professionals

Hans Akkerman
Chief Urban Designer,
City of Amsterdam

Paco Bunnik
Chief Urban Designer,
City of Amsterdam

The nightscape is a spatial and ever changing claire obscure.

AMSTERDAM

"City nightscape": what does this term mean to you?

H. Akkerman: A city nightscape is the literal observation of the cityscape by night. Not as a mere image but a fluid spatial entity and energy. A spatial and ever changing claire obscure. The nightscape of the city is a reflection of its nightlife, whether it is a sleeping street, a silent park or a thriving and buzzing nightlife area. The fact that it is a city, also means that it encompasses an extrajury of emotion, of culture, of city life. And in that sense, thinking about a nightscape is a smart way of thinking about the way you want your city to be.

H. Akkerman: For me the ideal nightscape is different for every city. Amsterdam differs in many respects, not only in terms of architecture and urban design, but also in terms of history and culture from - for example - Hong Kong. My view is to look at other cities, but determine what works best for your city, what needs your city has, what are the needs of Amsterdam.

Could you describe some of the main characteristics of the Amsterdam landscape?

P. Bunnik: The daytime landscape of Amsterdam is intertwined with the city urban appeal and image. Some of the key elements of this are its recognisable architecture unique to different city districts and areas, the abundance of water and trees, and very importantly, the materialisation of the baked-brick paved streets and sidewalks. There is a strange kind of timeless beauty when you learn to recognize these patterns which shape the image of Amsterdam.

The daytime landscape is nowadays arguably more readable and perhaps more appealing than its nighttime landscape, although the reflection of light on the water and the beautiful architecture at night has a particular and mystic quality to it.

Tell us about the creation of the city nightscape of Amsterdam.

P. Bunnik: The Amsterdam nightscape, strongly, with exception of the lighting in the UNESCO Canal District, has no clear distinction compared to other cities. At the moment, there is no major strategy or masterplan to make the city more readable by a nightscape approach with lighting.

However, in the last few years, with the development of our new light policy, we have been moving towards the notion, which is gradually developing within our planning community, that a nightscape is important for the image of the city for the wellbeing of its inhabitants and visitors and for the psychological effect the nightscape has to offer.

10

11

The nightscape is both a mental and physical picture.

12

13

14

15

16

17

18

19

20

21

22

23

24

25

26

27

28

29

30

31

32

33

34

35

36

37

38

39

40

41

42

43

44

45

46

47

48

49

50

51

52

53

54

55

56

57

58

59

60

61

62

63

64

65

66

67

68

69

70

71

72

73

74

75

76

77

78

79

80

81

82

83

84

85

86

87

88

89

90

91

92

93

94

95

96

97

98

99

100

12 interviewed cities

AMSTERDAM



ANTWERP



BOLOGNA



CITY OF LONDON



GENEVA



GHENT



JYVÄSKYLÄ



LYON



ROTTERDAM



SEOUL



SHANGHAI



STRASBOURG

Interreg 
North-West Europe
SMART-SPACE
European Regional Development Fund



Light is political





Security, Attractiveness, Aesthetics, Efficiency .



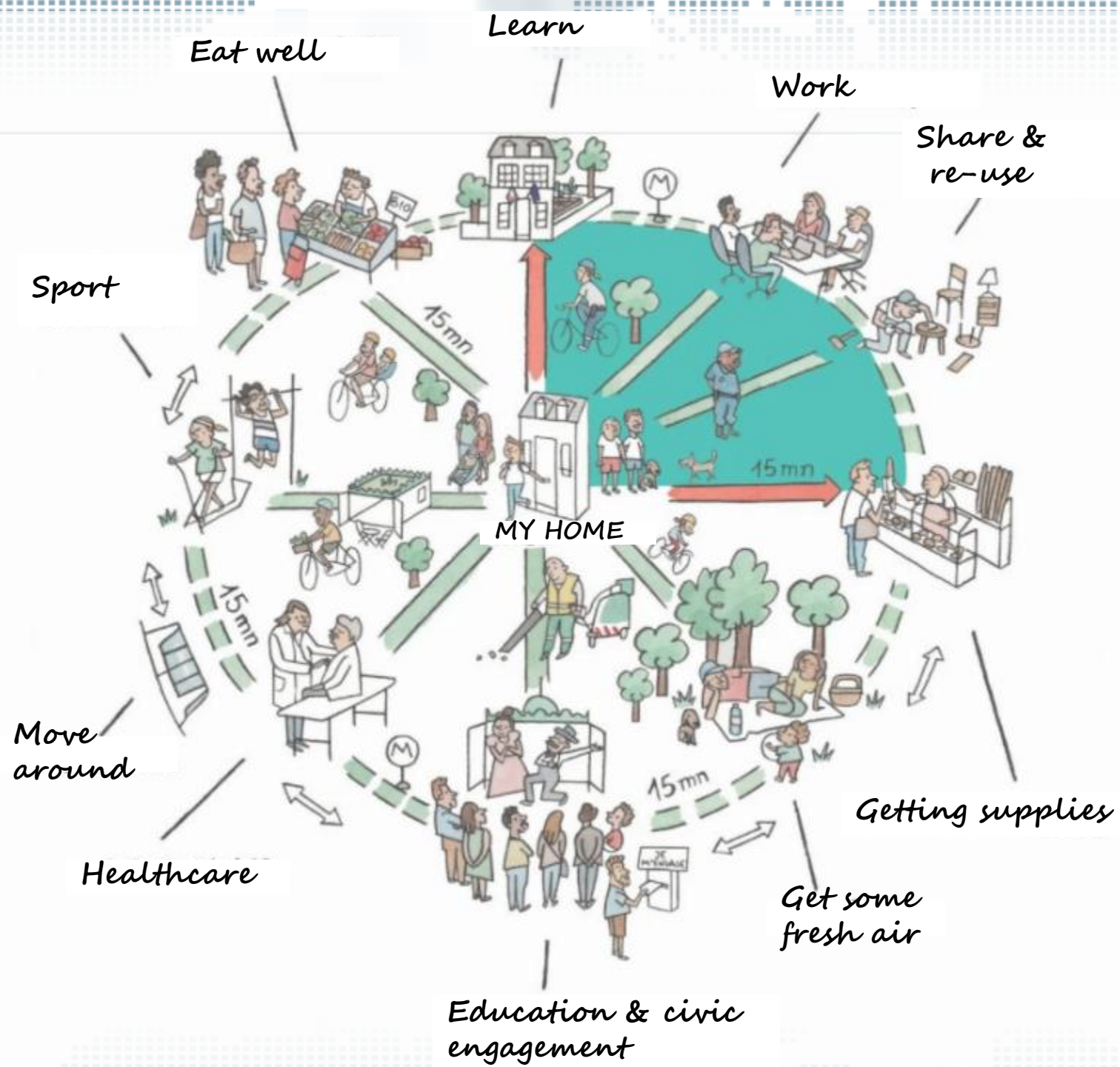
Importance of outdoor spaces, parks and green spaces.



© Seoul Metropolitan Government

New mobility.





**15 minute city-
Super blocks.**



© MBP, City of Lyon

Pocket nightscapes.



Good lighting accessible to all.



Interreg 
North-West Europe
SMART-SPACE
European Regional Development Fund

© Photo by Andrew Lee - Glasgow Castlemilk



Interreg 
North-West Europe
SMART-SPACE
European Regional Development Fund

© EPM, Medellín

Involve people with new participation methods.





New technologies
can help cities to
use light only
when and where it
is needed.

© City of Lyon
Photo: Michel Djaoui
Lighting Design: Coup d'Eclat





...../!\ Work in Progress /!\.....



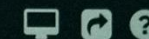


What is a smart city of you ?



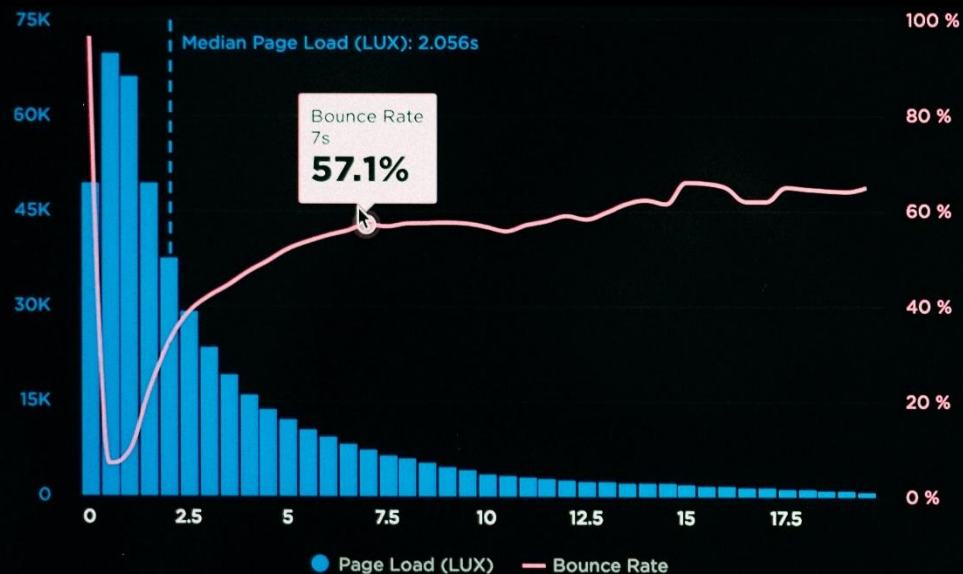
Thoughtful
Wellbeing Good
Hygge Trust Design
Inclusive
Happy
Healthy

USERS: LAST 7 DAYS USING MEDIAN ▾



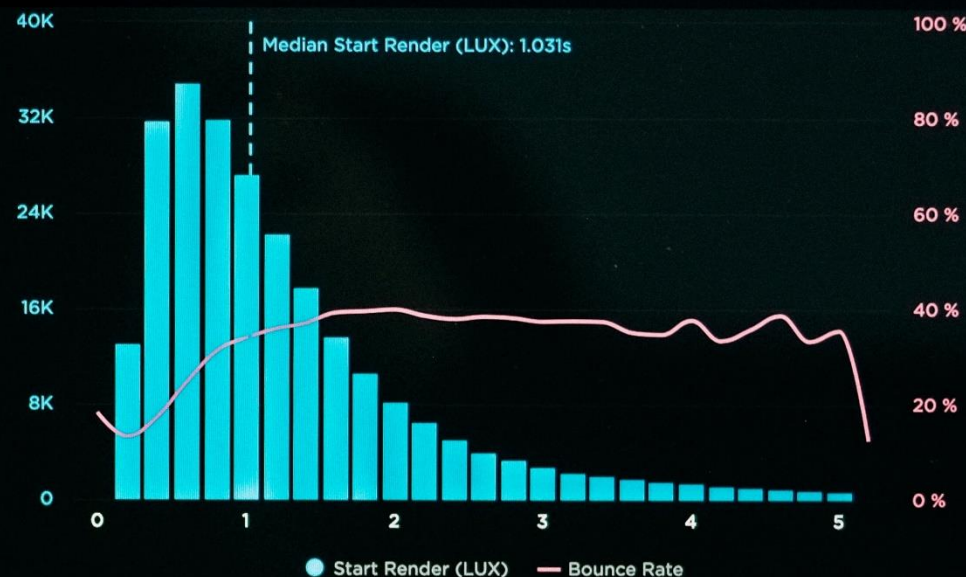
LOAD TIME VS BOUNCE RATE

⚙️ OPTIONS



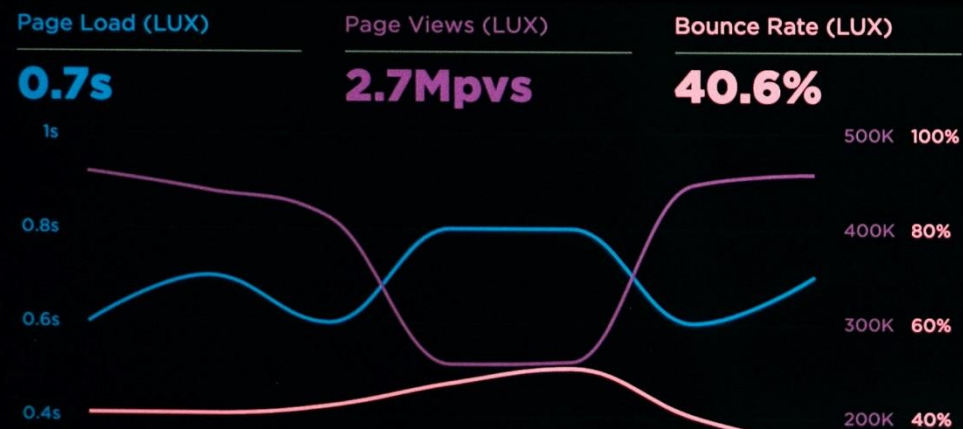
START RENDER VS BOUNCE RATE

⚙️ OPTIONS



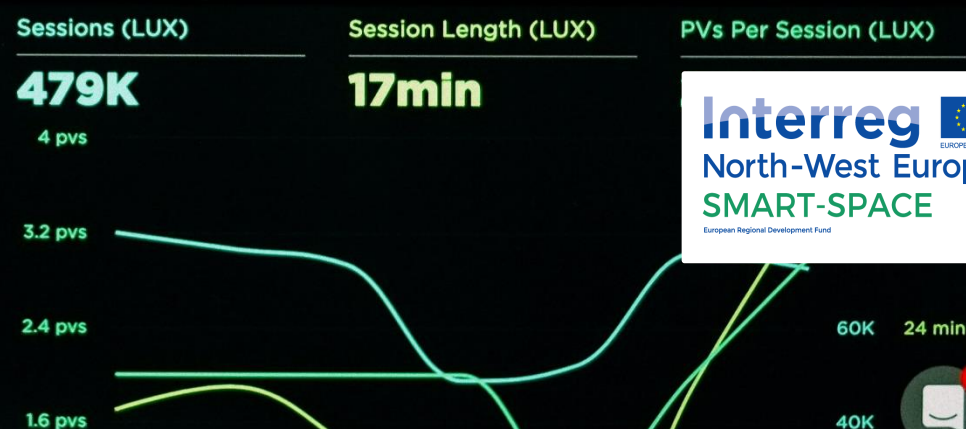
PAGE VIEWS VS ONLOAD

⚙️ OPTIONS



SESSIONS

⚙️ OPTIONS



Interreg 
North-West Europe
SMART-SPACE
European Regional Development Fund



Interreg 
North-West Europe
SMART-SPACE
European Regional Development Fund

BIG DATA IS
WATCHING YOU

Data is Key.

Data Management

Privacy by design

Availability, collection, storage, ownership, analysis

Strategic impact on public policies



We need to face it together.

About the White paper



Problems from current practice



Examples: Pilots



Examples: Large scale



Why transform public space?



GRAND CHALLENGES



Citizen involvement

Policy examples

Current Governance challenges and questions

What can YOU do ?

LUCI Hub

Search

+ Create



- Homepage
- Directory
- Personal Content
- My Dashboard
- My Events
- My Drafts
- My Bookmarks

GROUPS & SPACES

- THE LUCI HUB
- CITIES & LIGHTING RESOURCES
- LUCI NETWORK
- LUCI PILLARS
- LUCIA KNOWLEDGE CENTRE
- SMART-SPACE KNOWLEDGE CENTRE
- SmSp/ About & Welcome
- SmSp/ Communities of Practice
- SmSp/ Partners' workspace
- SmSp/ Project updates
- SmSp/ White paper Space

Content Feed

All content



Smart-Space Knowledge Centre



SmSp/ About & Welcome

Welcome to the Smart-Space Knowledge Centre!

Joined 36 MEMBERS



SmSp/ Communities of Practice

The Smart-Space Knowledge Center is a collaborative place for cities to exchange information, success stories, questions and good practices on smart lighting.

Joined 36 MEMBERS



SmSp/ Partners' workspace

Exclusively for Smart-Space partners to share documents and engage discussions on the project.

Joined 36 MEMBERS



SmSp/ Project updates

All the updates on Smart-Space activities as they happen !

Joined 37 MEMBERS



SmSp/ White paper Space

This is a private space for LUCI & Philip to collaborate on the White paper on smart urban lighting

Joined 13 MEMBERS



“Lighting Library”



≡

LUCI Hub

Homepage

Directory

Personal Content

My Events

My Drafts

My Bookmarks

GROUPS & SPACES

See All

SMART-SPACE KNOWLEDGE CENTRE

LUCIA KNOWLEDGE CENTRE

CITIES & LIGHTING RESOURCES

1. Lighting library

Lighting Library

Welcome to Lighting Library

Case studies

Presentations

LUCI publications

Research findings

2. Lighting in the news

3. Announcements & calls

LUCI NETWORK

LUCI PILLARS

LUCI TEAM

WELCOME TO THE LUCI HUB

This space

Search

LUCI Hub > CITIES & LIGHTING RESOURCES > 1. Lighting library

1. Lighting library

Joined

2 ADMINS

54 MEMBERS

Tags

Urban lighting topics

LED technology

energy efficiency

sustainability

architecture

smart lighting

Show more

Type of content

presentation

case study

magazine

research report

recommandation

Type of activity

City

Country

Year

Tags

Filters

1 - 10 of 205

Sort by: Relevance

Content in 1. Lighting library

Creating a better lighting environment for the Thames

Virtual tours of the Illuminated River bridges throughout London are now available via Google Arts & Culture, with high quality images, videos, and detailed explanations of the project.

art & light

bridge lighting

creative lighting

+4

Jessica Ferey

30th Apr, 2020

Content in 1. Lighting library

Welcome to the Lighting Library!

The Lighting Library gathers together a variety of resources – publications, case studies, presentations, research reports and more – on urban lighting. This is where you can find and share material on any lighting topic that interests you! Click on th...

Author: LUCI Association

Nikita Junagade & 1 other

14th Apr, 2020

Content in 1. Lighting library

Tackling Social Inequalities in Public Lighting

This report by the Configuring Light/Staging the Social research programme of the London School of Economics, explores links between urban lighting and social inequalities. It provides practitioner- and policy-targeted recommendation

Author: London School of Economics

Publication Date: Tuesday, April 14, 2020 12:00 PM

citizen engagement

city at night

inclusive lighting

+9

Nikita Junagade & 1 other

14th Apr, 2020

Content in 1. Lighting library

Legal framework on public lighting in 6 EU countries : Germany, Slovenia, Italy, Poland,

Interreg

North-West Europe

SMART-SPACE

European Regional Development Fund

EUROPEAN UNION

EUROPEAN UNION

EUROPEAN UNION

EUROPEAN UNION

“Lighting in the News”



LUCI Hub

Homepage

Directory

Personal Content

My Dashboard

My Events

My Drafts

My Bookmarks

GROUPS & SPACES

See All

THE LUCI HUB

CITIES & LIGHTING RESOURCES

1. Lighting library

2. Lighting news

News feed

All articles

3. Announcements & calls

LUCI NETWORK

LUCI PILLARS

LUCIA KNOWLEDGE CENTRE

SMART-SPACE KNOWLEDGE CENTRE

LAIPS PROJECT INTERNAL SPACE

LUCI TEAM

This space x

Search

+ Create

Joined

Content Feed

Content in 2. Lighting news

New winter / light festivals in Melbourne, Adelaide and Sydney

31st Mar, 2021

Content in 2. Lighting news

Philadelphia (US) is about to go completely dark at night. Here's why

30th Mar, 2021

Content in 2. Lighting news

City of Lyon receives national award for new tunnel lighting - LUCI Association

29th Mar, 2021

Content in 2. Lighting news

Seoul's multifunctional smart poles will soon be able to charge drones

25th Mar, 2021

Content in 2. Lighting news

Lights off: France parkour collectives fight pollution one store sign at a time

22nd Mar, 2021

Content in 2. Lighting news

River of Light trail in Liverpool

Activity Log

Jessica Ferey added a content : New winter / light festivals in Melbourne, Adelaide and Sydney

6 hours ago

You added a content : Philadelphia (US) is about to go completely dark at night. Here's why

a day ago

Noë Hautbois added a content : City of Lyon receives national award for new tunnel lighting - LUCI Association

2 days ago

Noë Hautbois added a content : Seoul's multifunctional smart poles will soon be able

Interreg North-West Europe SMART-SPACE

Lights off: lution one

8 days ago

Share and access contents in each of the 4 Communities of Practice - CoPs



LUCI Hub

Home **Homepage** **Directory** **Personal Content** **My Dashboard** **My Events** **My Drafts** **My Bookmarks**

GROUPS & SPACES **CITIES & LIGHTING RESOURCES**

LUCI NETWORK **LUCI PILLARS** **LUCIA KNOWLEDGE CENTRE** **SMART-SPACE KNOWLEDGE CENTRE**

SmSp/ About & Welcome **SmSp/ Communities of Practice**

See all CoP Activity **Intro to Communities of Practice** **CoP1 Pilot sites & beyond** **CoP2 Sustainability strategy** **CoP3 What is "smart lighting"** **CoP4 Citizen involvement** **All content**

This space **Search** **+ Create** **?** **1** **2**

Type of activity **City** **Country** **Year** **Language**

Content **reshared in SmSp/ Communities of Practice**

Hong Kong testing Multi-Functional Smart Lampposts - new landmark reached

The Multi-functional Smart Lampposts pilot scheme is a three-year programme in which some 400 smart lampposts will be installed in phases in four districts with higher pedestrian and traffic flow, with a view to promoting smart city development...

Publication Date: Friday, December 13, 2019 5:26 AM
Source: OpenGov Asia

data privacy data security digitalisation +13

Camille Chaumeron-Jourdan
1st Oct, 2020

Content **reshared in SmSp/ Communities of Practice**

The link between 'Smart' Streetlights and Surveillance challenges (San Diego)

In San Diego, 'Smart' Streetlights Spark Surveillance Reform article by CITYLAB. An interesting read. The end quote of this article might intrigue you. "I do think that there's a major function for technology," said (Councillor) Montgomery. "I just think..."

data privacy data security new technologies +11

Mark Burton-Page
25th Sep, 2020

Content **in SmSp/ Communities of Practice**

Talence, pilot city with 100% of its lighting in connected LEDs

Despite this particular and difficult context for construction sites, the City of Talence has continued to launch an project: the change of its entire outdoor public lighting park with connected LEDs. It is the first French city to ch

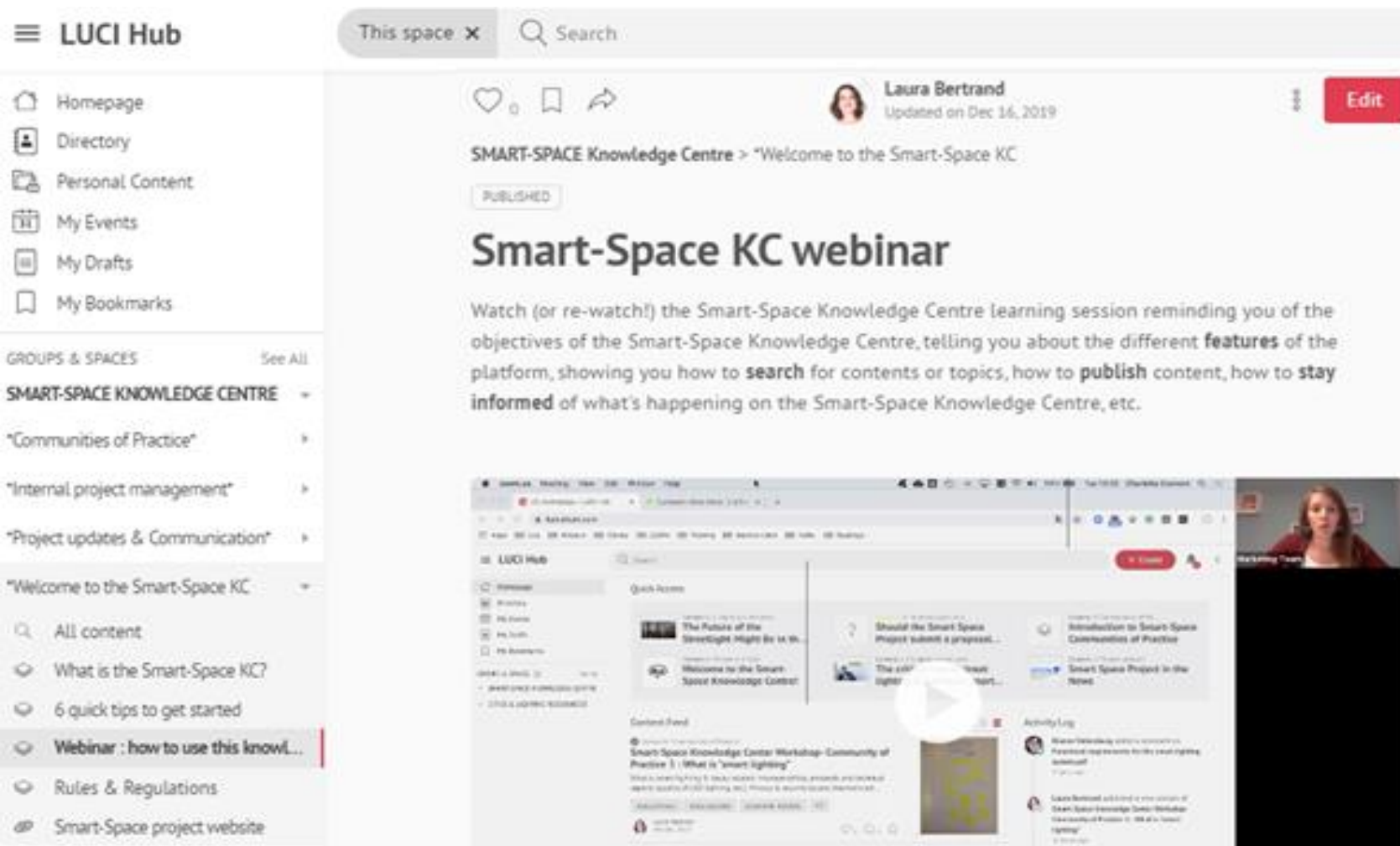
Publication Date: Wednesday, July 1, 2020 9:33 AM
Source: Mairie de Talence

adaptative lighting LED technology pilot +9

Camille Chaumeron-Jourdan
6th Jul, 2020

Interreg **North-West Europe** **SMART-SPACE**
European Regional Development Fund

Smart Space KC - Webinar

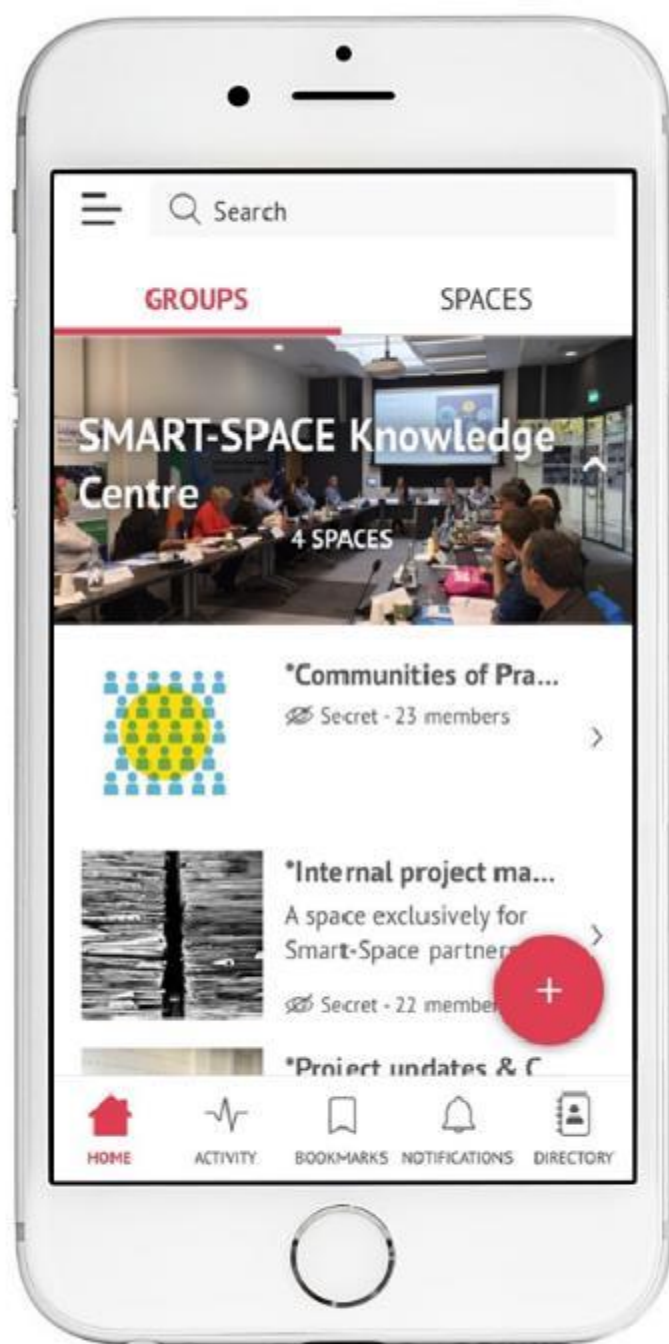


This webinar enables you to:

- Understand the KC features;
- Learn how to **search for & publish** contents;
- Learn how to **like & comment** & receive feedback;

The **mobile app** is tailor-made for easy, everyday use.

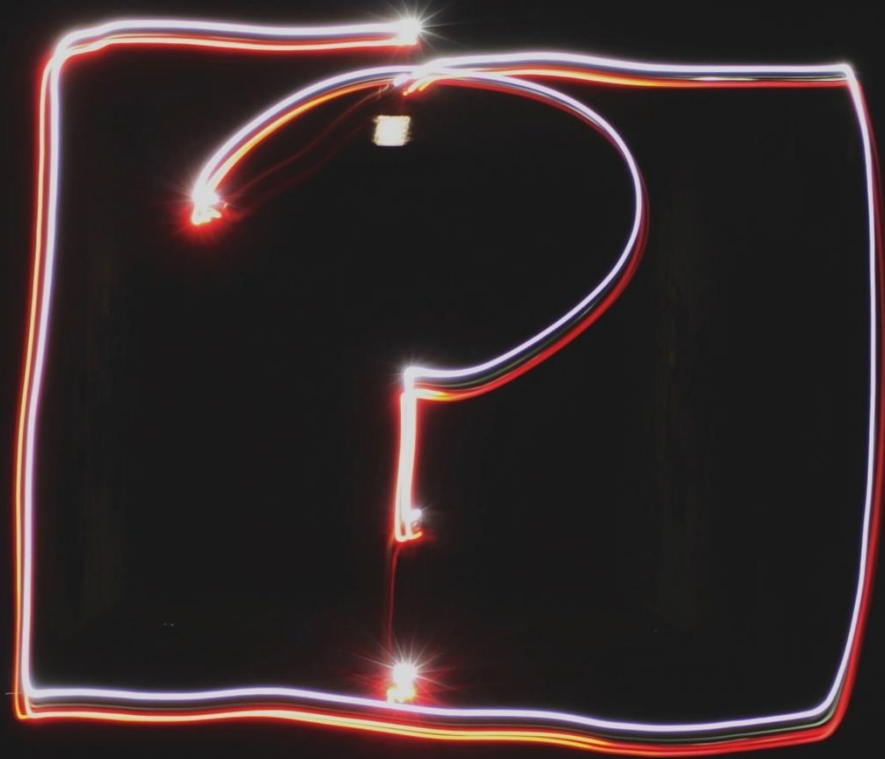
Learn & share on the go !



What can **you** share ?

- **Articles** that you think are relevant
- **Documents** that explains your lighting strategy or lighting project
- **Write lessons learnt** on ongoing projects
- **A question** to the Community





Thank you for your attention !

Mark Burton-Page

LUCI General Director

mark.burtonpage@luciassociation.org

www.luciassociation.org