

SLIGHT HOUSE

Creative bonding with reclaimed bricks for a new private house

About - As an alternative to the use of new materials, Studio Bark architects opted for reclaimed bricks to clad the façade of a Londonian private house. These bricks are largely available on the reclamation market and were integrated into the design process.

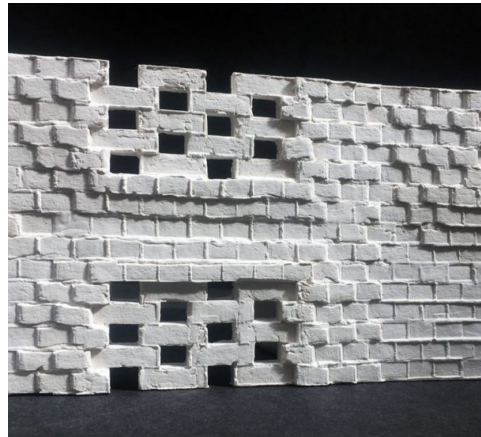
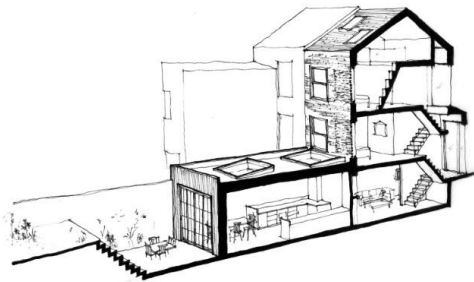
Challenges - Finding the right type of reclaimed brick and how to install it.

Materials involved - Bricks

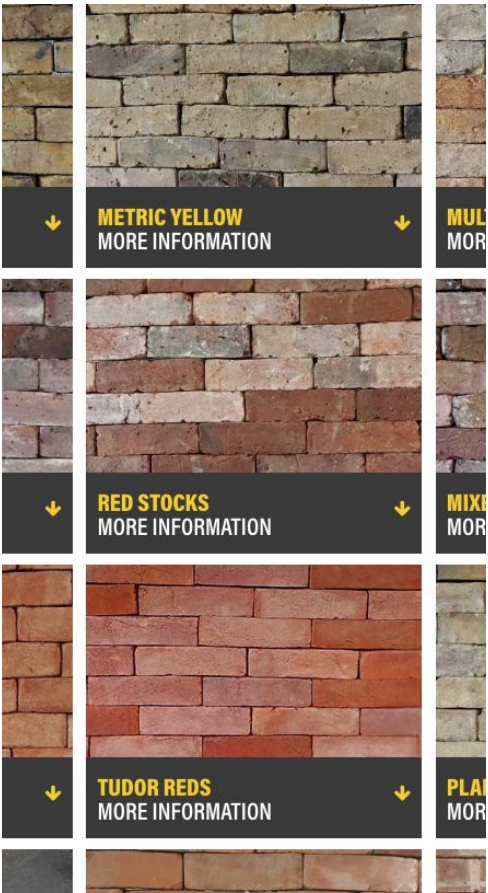
London - UK - 2021 - Private procurement
Project Size : 87 sqm - FCRBE partner : [Rotor asbl](#) -
Project Owner : private - Project Manager : [Studio Bark](#)- Brick supplier: [London Reclaimed Brick Merchants](#) - Contractor: [ASAP Construction](#)



< Context, sketch and model © Studio Bark



Slight House is a private terraced house project in the Clapton Square Conservation area of London. At the design stage, the architects plan to work with a reused brick, the Yellow London Stock Brick, and begin the design of their façade. The standard and predictable nature of this brick allowed this work to take place before the supplier was found.



< Left: Reuse bricks stored at a reclaimed dealer © Rotor. Right: materials available at a dealer's site. © London Reclaimed Brick Merchants

A search and selection of resellers of reuse bricks is conducted via the online directory available on Salvoweb.com.

< *Extract from the guidance note* ©
Rotor

Specifications for the use of reclaimed bricks as facing bricks

1. Material:

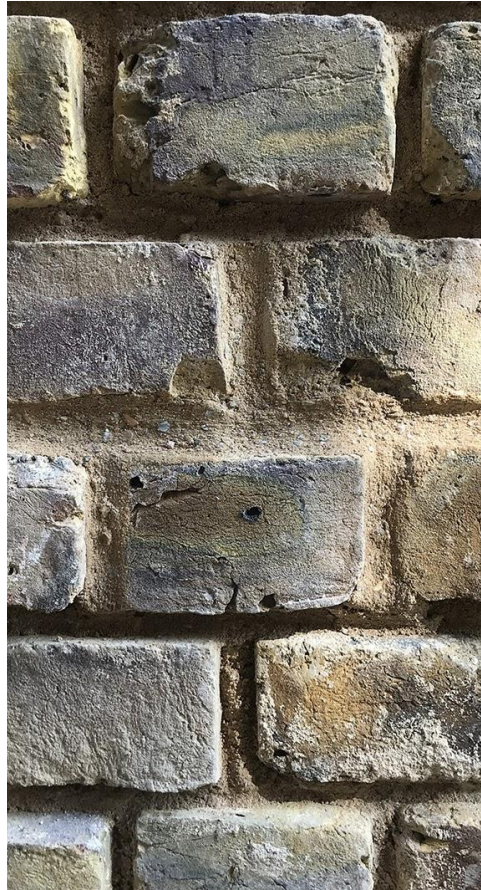
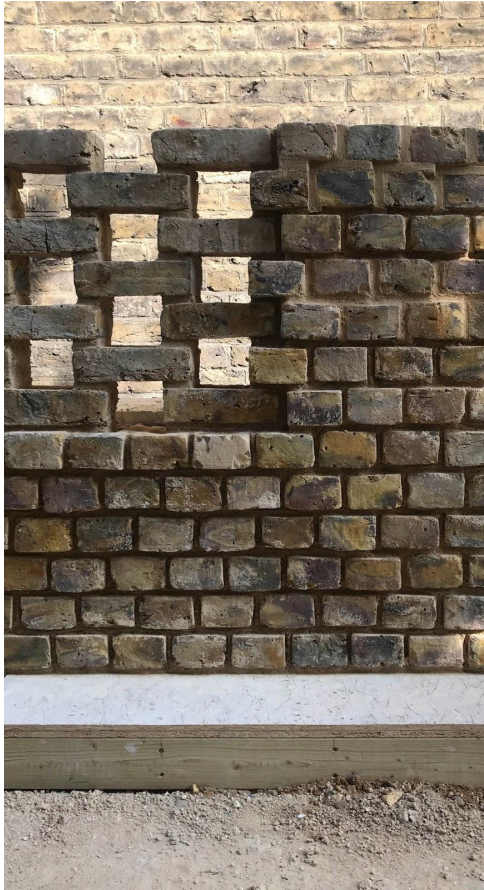
- 1.1. The reclaimed bricks are acquired from a professional reclamation dealer¹ and are provided by the contractor. A representative sample is submitted in advance to the architect and the client for approval.
- 1.2. The bricks are delivered to the building site ready for use.
- 1.3. The bricks are always:
 - 1.3.1. frost-resistant and resistant enough: bricks that are too porous, produce a muffled sound when bumped against each other, crumble when touched or break during cleaning have been disqualified during the cleaning and sorting process at the dealer.
 - 1.3.2. well cleaned and sorted: where paint remains are present on the face of a brick, the opposite side of the brick must also be in good condition. The bricks are free of large mortar residues, but superficial traces of mortar may remain.
 - 1.3.3. fit for re-use: the origin of the bricks cannot imply any risk of adverse effects. In any case: no bricks from stables which may give off an ammonia odour; no bricks from foundations, cesspits or wells, the quality of which has been weakened by permanent contact with water; no blackened bricks from chimneys, which may give rise to black efflorescence.
 - 1.3.4. free of contamination by harmful substances (e.g. no bricks impregnated with motor oil).
- 1.4. The bricks are delivered in sufficient quantities, on pallets and protected by a plastic sheet.
- 1.5. The bricks are delivered well mixed, regardless of whether they are bricks of the same origin, a combination of batches of different origins, or a combination of different brick varieties.
- 1.6. The facade will be mostly made of cut bricks, in different and precise dimensions. The percentage of full bricks and half bricks (or other formats) will be communicated to the contractor as soon as the final brickwork is established. We strongly advise to have the bricks cut by the reclamation dealer and not on site by the contractor.
- 1.7. The bricks are stored on pallets on a flat, dry floor. The bricks are sheltered from the weather and protected against rising damp, so that they are air-dry when laid.

2. Type of brick:

2.1. Size

¹ In annex, you'll find a list of reclaimed brick resellers in the London area.

To facilitate the work of the architect, a small guidance note is produced. It indicates some recommendations for the use of reused bricks.



< Mockup made by the contractor © Studio Bark

The layout designed by the architects involves cutting out some bricks. This issue was discussed with several dealers, in particular to determine whether they were able to carry out this operation. Some dealers offered this service, but due to the complexity of the brickwork design stepping in and out (there are a number of different proportions the bricks have been cut to) it was simpler logistically for the contractor to cut the bricks himself on site.

For its part, the company is making a mockup of the facade from reused bricks.



< Brickwork started on party walls and garden walls © Studio Bark

- Considering from the very beginning of the project the type of reuse materials that will be used allows the operations to be set up and the points of attention to be clearly defined.
- Relying on materials that are stably present on the reuse market and whose characteristics are predictable and known allows the integration of these elements into the architectural project to be drawn up precisely, in this case to design a sophisticated brickwork.