

# Region of Parkstad: Regional Agenda for Circular Buildings

Peter Bertholet  
Director City Region Parkstad Limburg  
22 June 2022

PARK  
STAD  
TRANS  
FOR  
MEERT



# Parkstad Limburg

7 municipalities

Brunssum

Heerlen

Kerkrade

Landgraaf

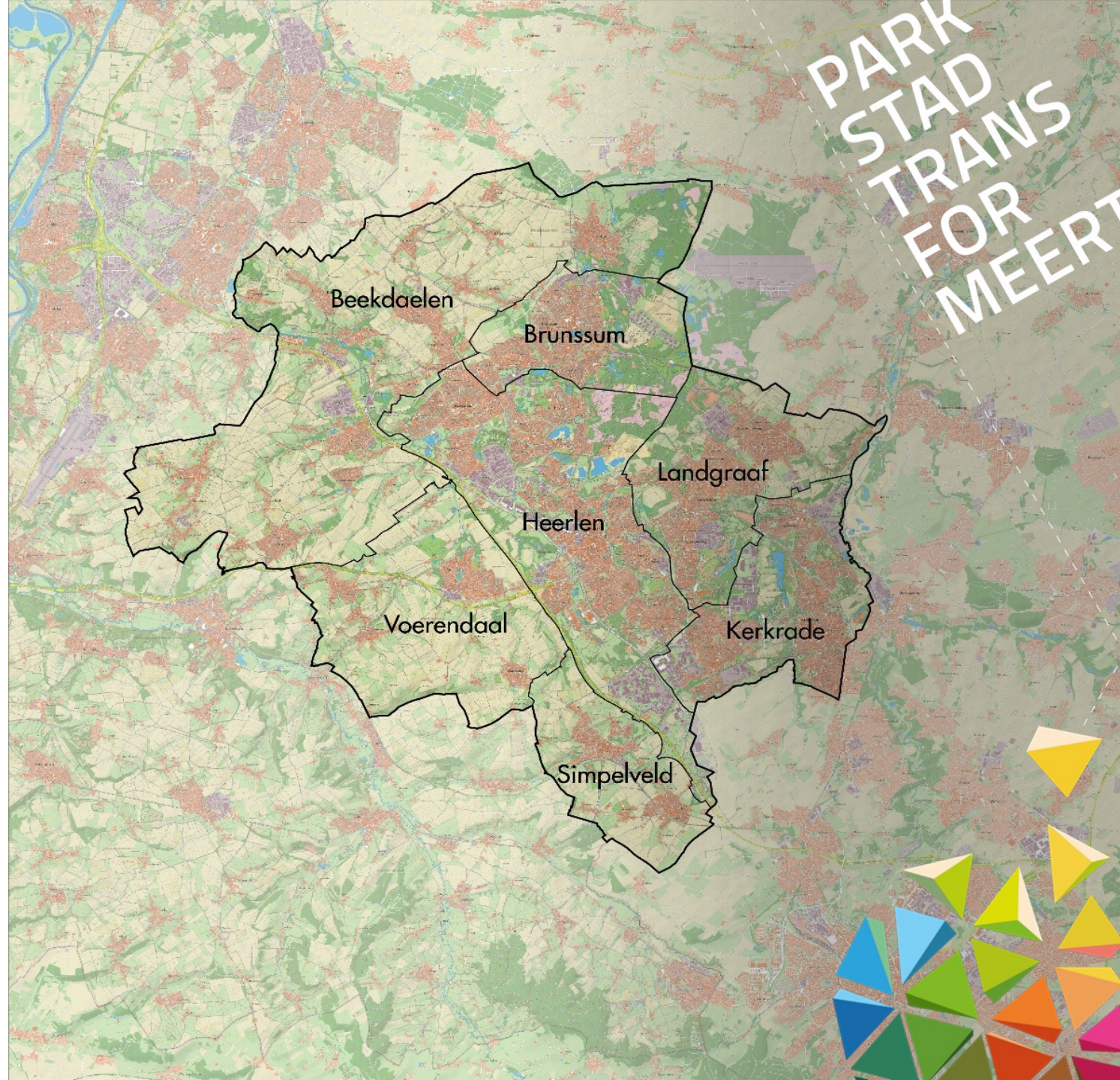
Beekdaelen

Simpelveld

Voerendaal

257.000 inhabitants

23 % of Limburg



# Euregion Meuse-Rhine

Approximately 3.9  
million inhabitants

# Region Parkstad Limburg

Approximately 257.000  
inhabitants



# PARKSTAD LIMBURG AND DEMOGRAPHIC CHANGE

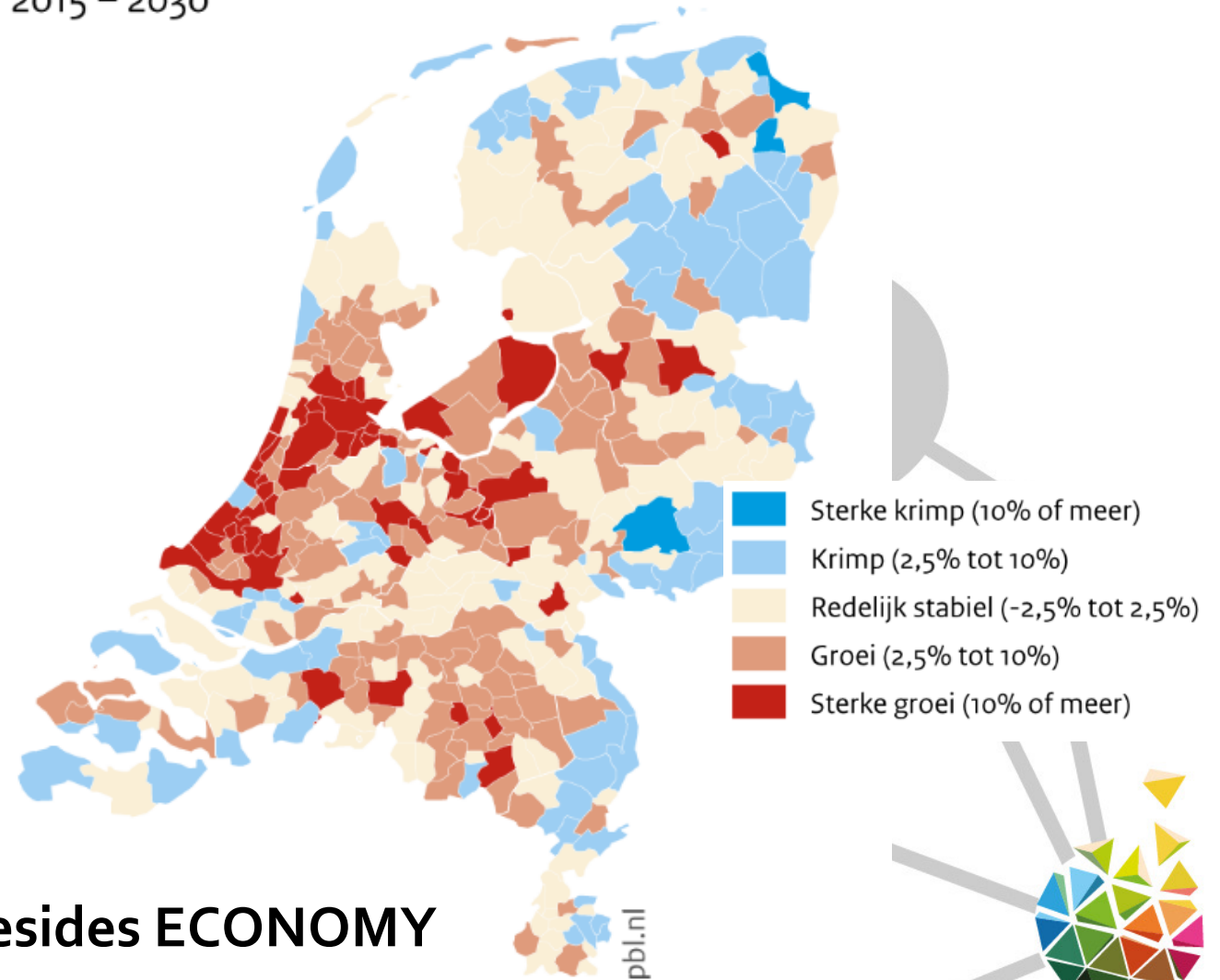
2015 – 2030

Parkstad population shrinks

- 1997: 275.000 inhabitants
- 2012: 250.000 inhabitants
- 2020: 244.000 inhabitants
- 2030: 230.000 inhabitants
- 2040: 210.000 inhabitants

Big transformation task

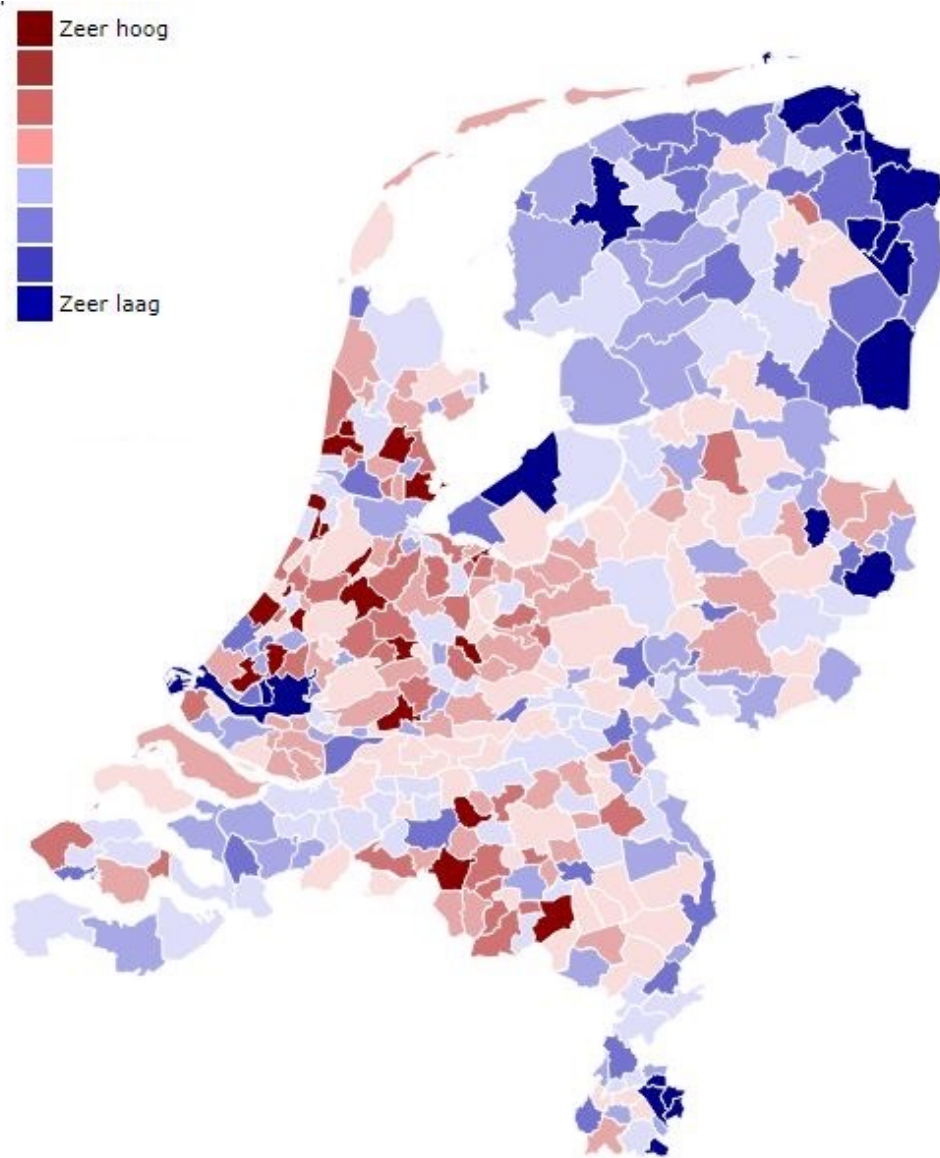
- Physical
- Economic
- Social



**RESTRUCTURING** central challenge besides **ECONOMY**

# Broad Prosperity

(income, health, chance to get a job)



360	Landgraaf	4.5
361	Schiedam	4.4
362	Emmen	4.4
363	Enschede	4.2
364	Rotterdam	4.2
365	Almelo	4.1
366	Veendam	4.1
367	Brunssum	4.0
368	Appingedam	4.0
369	Stadskanaal	4.0
370	Delfzijl	3.9
371	Oldambt	3.9
372	Pekela	3.7
373	Kerkrade	3.6
374	Heerlen	3.5

Bron: Bureau Louter, 2018

PARK  
STAD  
TRANS  
FOR  
MEERT



# Region Deal Parkstad

PARK  
STAD  
TRANS  
FOR  
MEERT

**Eerste termijn**

- 1 Central Park
- 2 URBAN HERITAGE/ Landsfort Herle
- 3 Rolduckerveld
- 4 IDOP Bolcholtz

**Tweede termijn**

SES

- 5 **Kansrijke start**
- 6 GBT: Titus Brandsma
- 7 GBT: Langeberg
- 8 GBT: Vlieger
- 9 GBT: Horizon
- 10 GBT: Schatkist
- 11 GBT: Steltloper
- 12 GBT: Wereldwijs
- 13 GBT: Schatgraver
- 14 GBT: OBS Harlekijn
- 15 **Sprinckplank**
- 16 **Woow**
- 17 **Verlengde Schooldag**
- 18 Werk in de Wijk
- 19 Leren binnen het wijkbedrijf Brunssum Noord
- 20 Rolduckerveld BCpl Holz
- 21 Wijj(k)

WONEN EN LEEFBAARHEID

- 22 De Egge
- 23 **Voorzieningenwijzer**
- 24 Schilterstraat
- 25 GMS Saffierflat
- 26 Lauradorp
- 27 **Inpondmakelaar**

VEILIGHEID

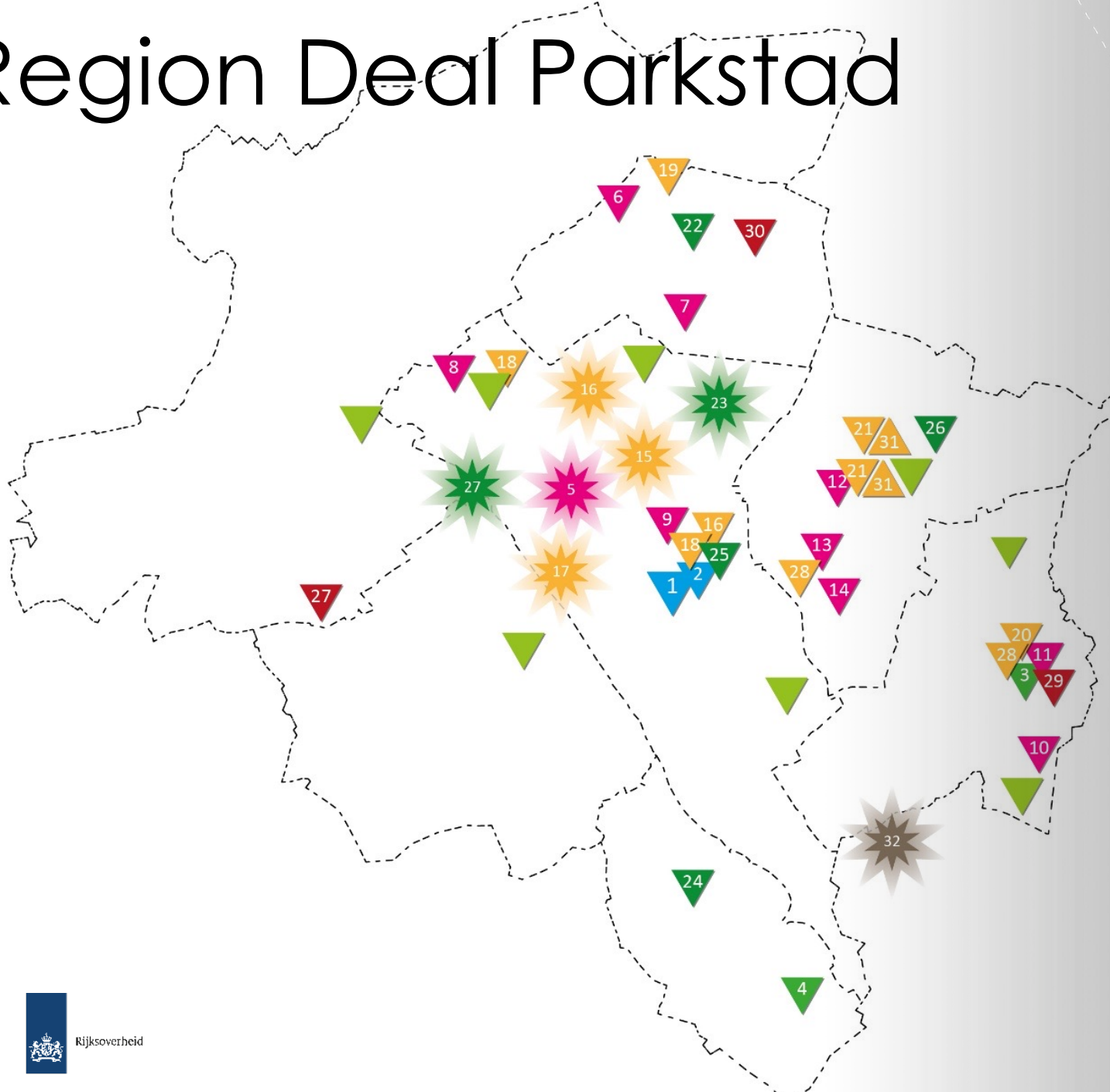
- 28 Beekdaelen
- 29 Rolduckerveld
- 30 Brunssum Oost bedrijventerrein

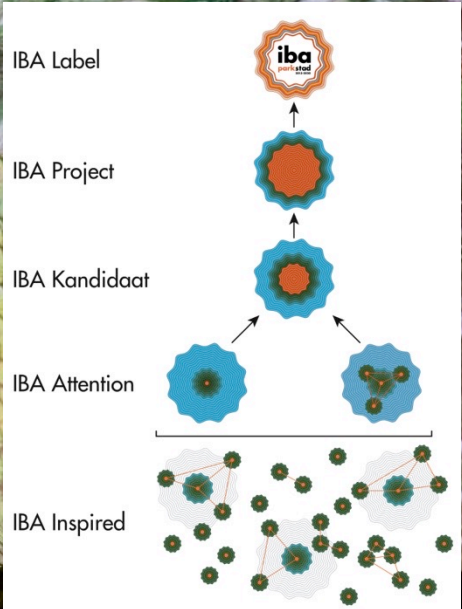
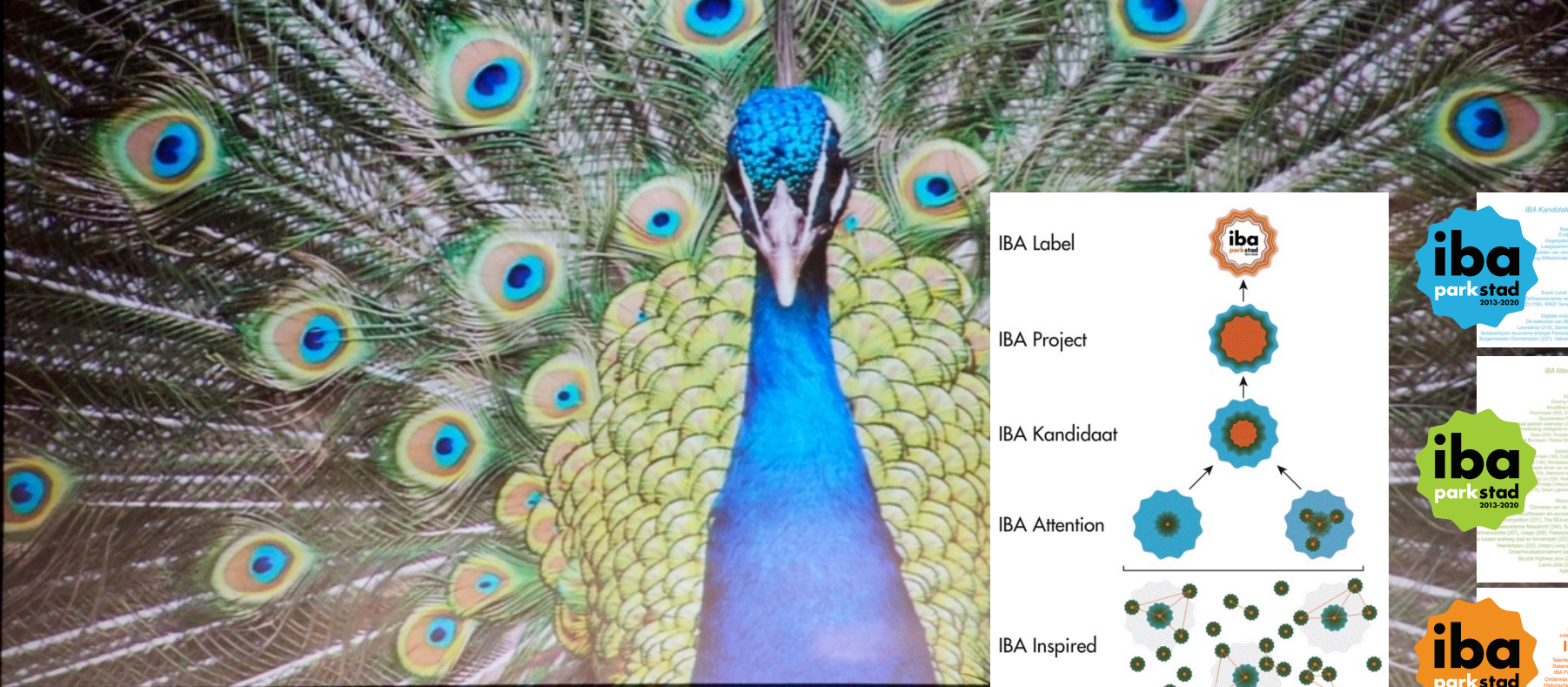
VOORZIENINGEN EN RETAIL

- 31 Oud Nieuwenhagen en Op de Kamp

GROS

- 32 ZLEU
- SGA
- Theatergrenzen overwinnen
- Velocity





IBA Kandidaten 39 IBA Kandidaten

**iba parkstad 2013-2020** **39**

IBA Kandidaten 39

De IBA Award 2013-2020 wordt toegekend aan de meest innovatieve en inspirerende stad van Nederland. De IBA Award wordt toegekend aan de meest innovatieve en inspirerende stad van Nederland. De IBA Award wordt toegekend aan de meest innovatieve en inspirerende stad van Nederland.

IBA Attention 87 IBA Attention

**iba parkstad 2013-2020** **87**

IBA Attention 87

De IBA Award 2013-2020 wordt toegekend aan de meest innovatieve en inspirerende stad van Nederland. De IBA Award wordt toegekend aan de meest innovatieve en inspirerende stad van Nederland. De IBA Award wordt toegekend aan de meest innovatieve en inspirerende stad van Nederland.

**iba parkstad 2013-2020** **IBA Academie 24**

IBA Academie 24

De IBA Award 2013-2020 wordt toegekend aan de meest innovatieve en inspirerende stad van Nederland. De IBA Award wordt toegekend aan de meest innovatieve en inspirerende stad van Nederland. De IBA Award wordt toegekend aan de meest innovatieve en inspirerende stad van Nederland.



# Investments Rheinisches Revier

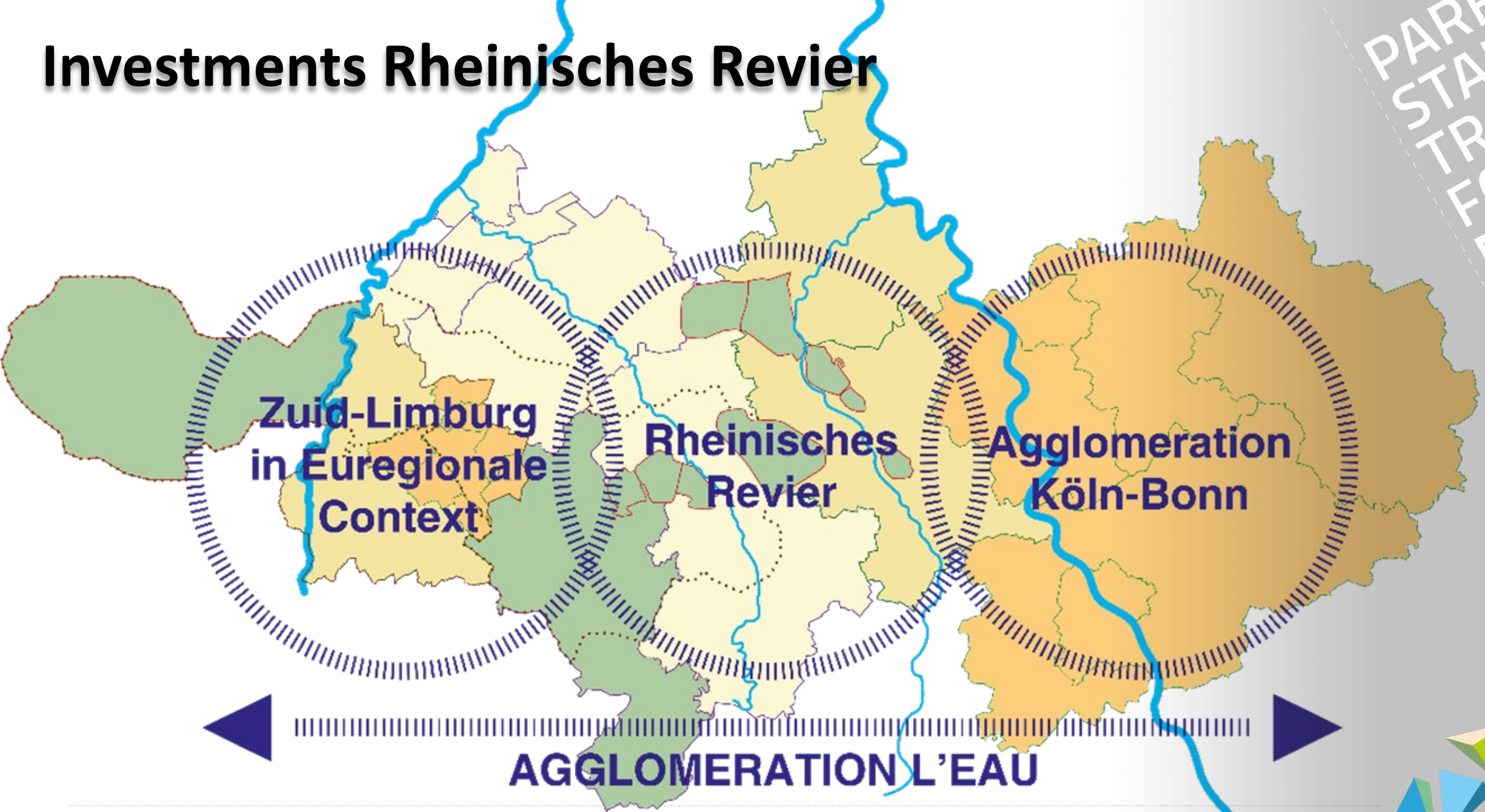
PARK  
STAD  
TRANS  
FOR  
MEERT





# Investments Rheinisches Revier

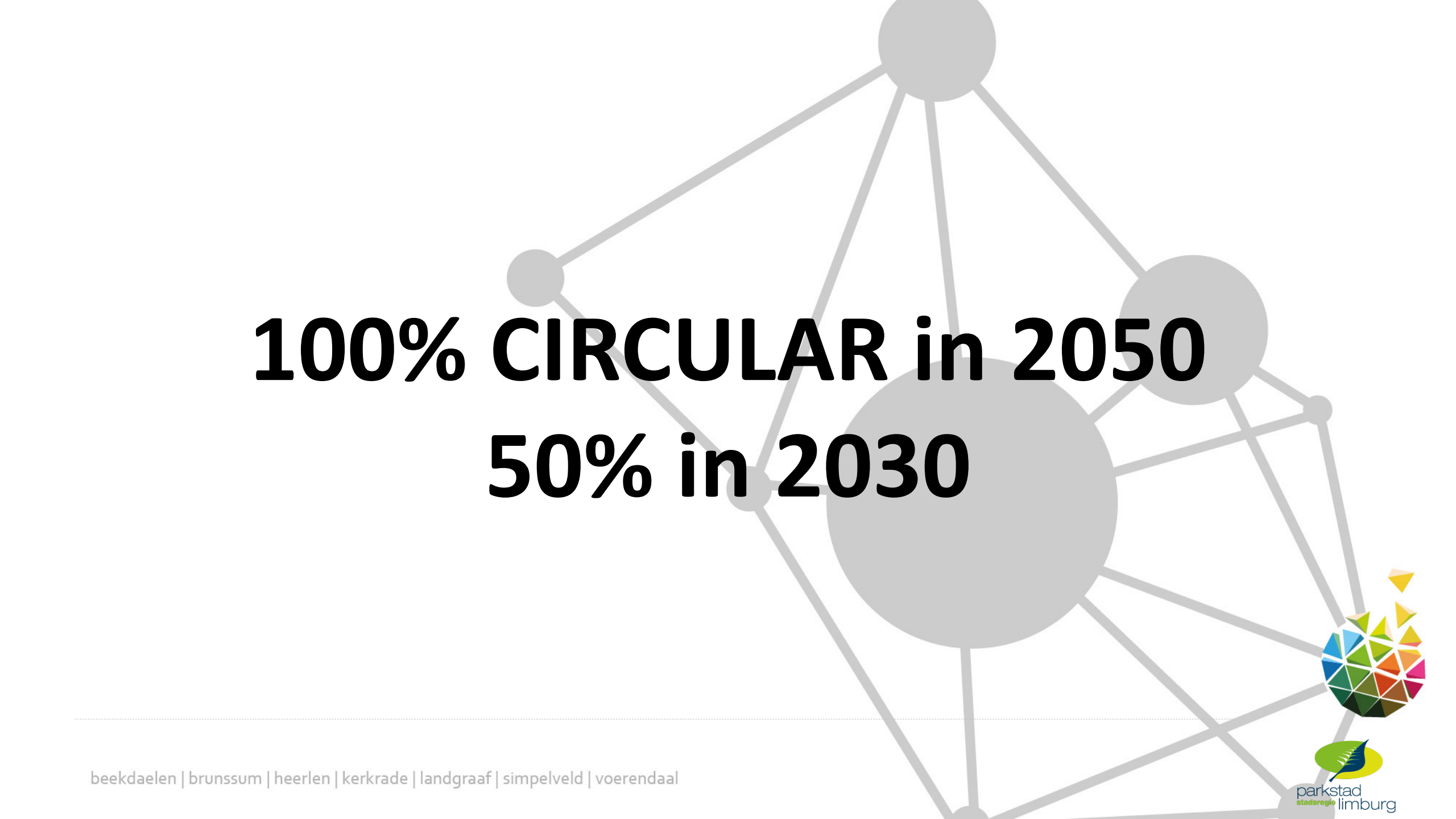
PARK  
STAD  
TRANS  
FOR  
MEERT



# Strategic Agenda Parkstad 2021-2030

## Regional development through two lines:

- I. Sustainable economic growth potential  
*Creating new perspectives and capitalizing on opportunities*
- II. Liveable and healthy neighbourhoods and cores  
*Integration of social and physical approach at area level*



**100% CIRCULAR in 2050**  
**50% in 2030**

# CIRCULAR ECONOMY AS OPPORTUNITY FOR PARKSTAD

- (New local) Economic development
- Broad prosperity
- Better health
- Social cohesion
- Accelerated energy transition
- Sustainable mobility
- Sustainable agricultural sector
- Smart demolition and construction

→ Circular Economy needs an integral approach



# CIRCULAR CONSTRUCTION IN PARKSTAD

Transformation challenge - physical restructuring:

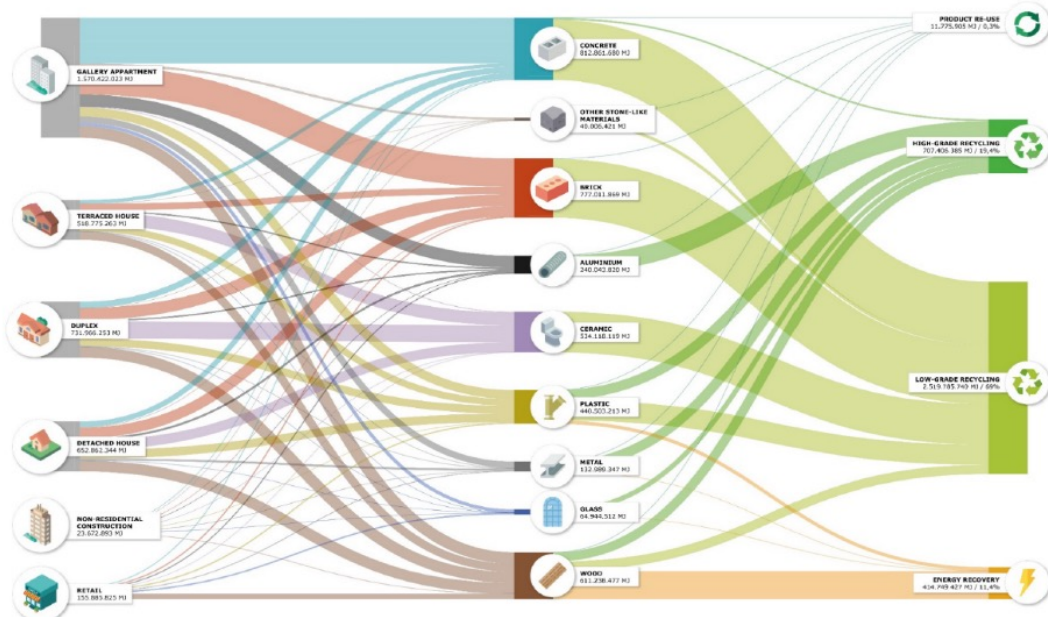
- 8.000 dwellings abundant
- 130.000 m2 retail abundant
- 2.000 new qualitative dwellings

Opportunities!

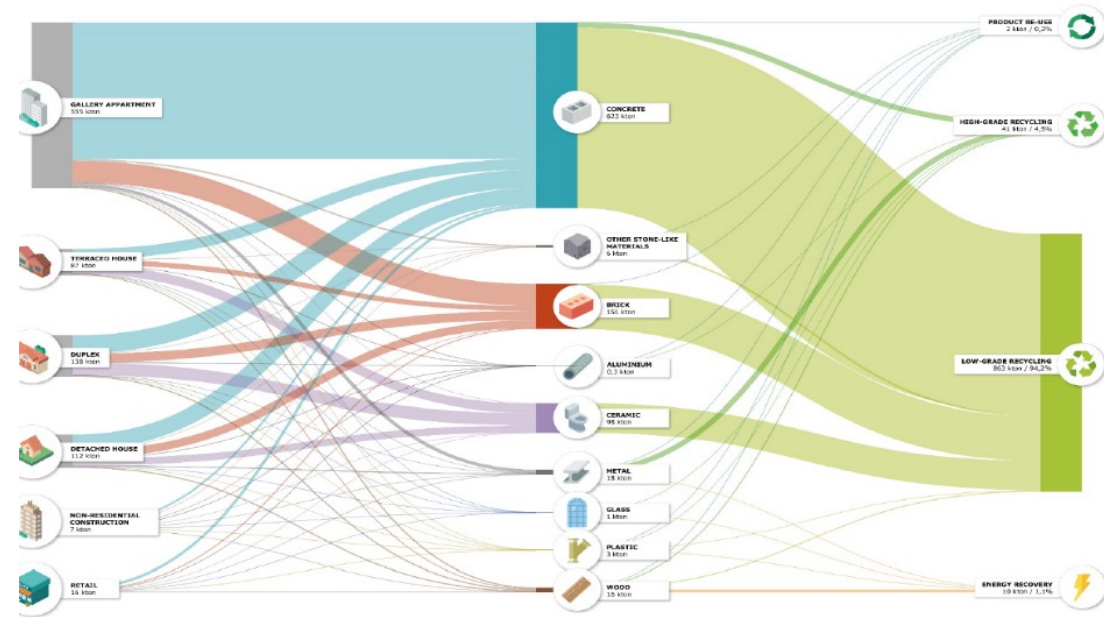
- ✓ Sustainable and Liveable Parkstad
- ✓ Example in NL & Europa
- ✓ (Socio)Economic opportunities

# PARKSTAD URBAN MINE – MATERIALS IN THE BUILT ENVIRONMENT

Embodied Energy in materials from the building demolition stock in Parkstad

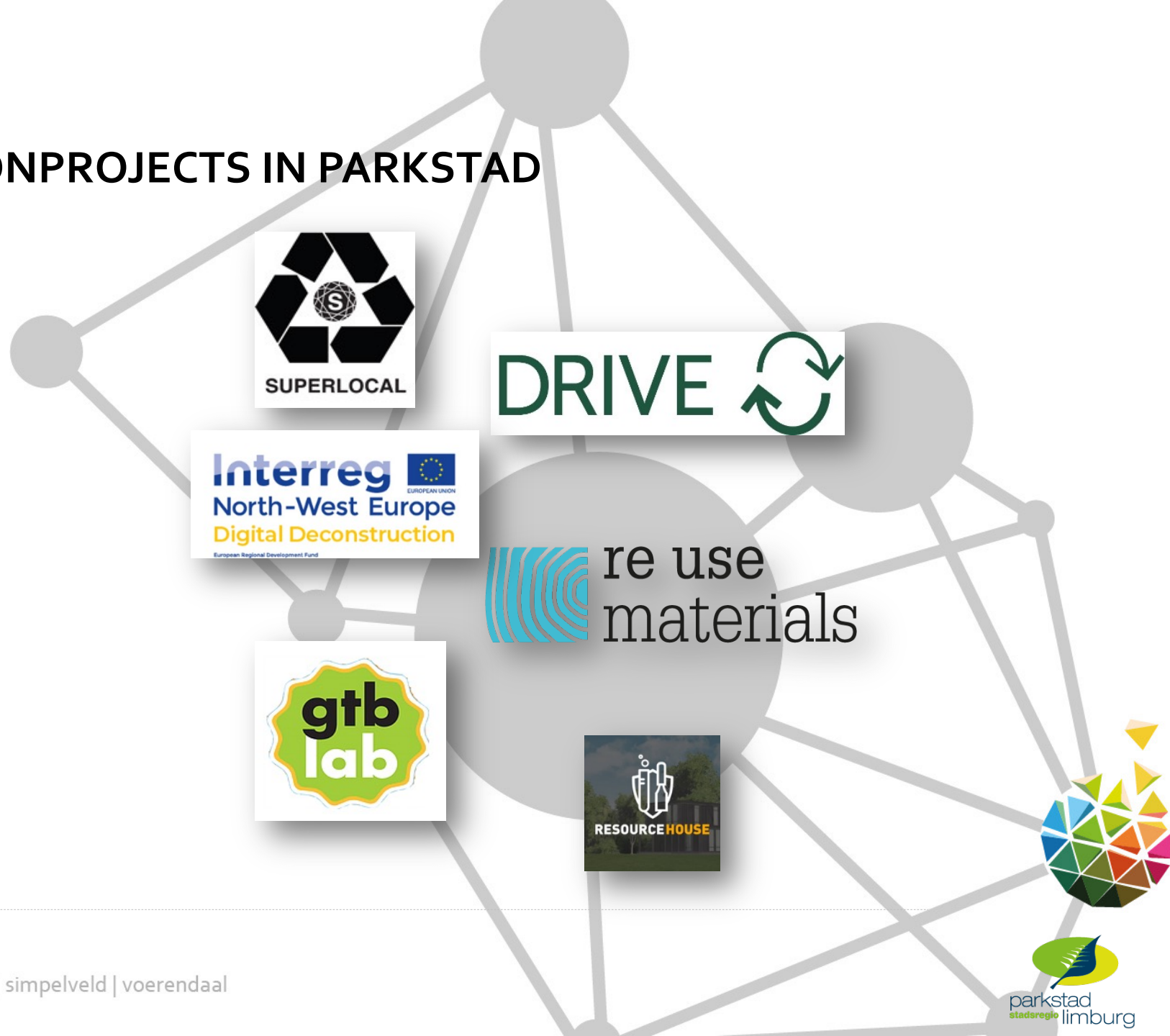


Material flow potential from the building demolition stock in Parkstad

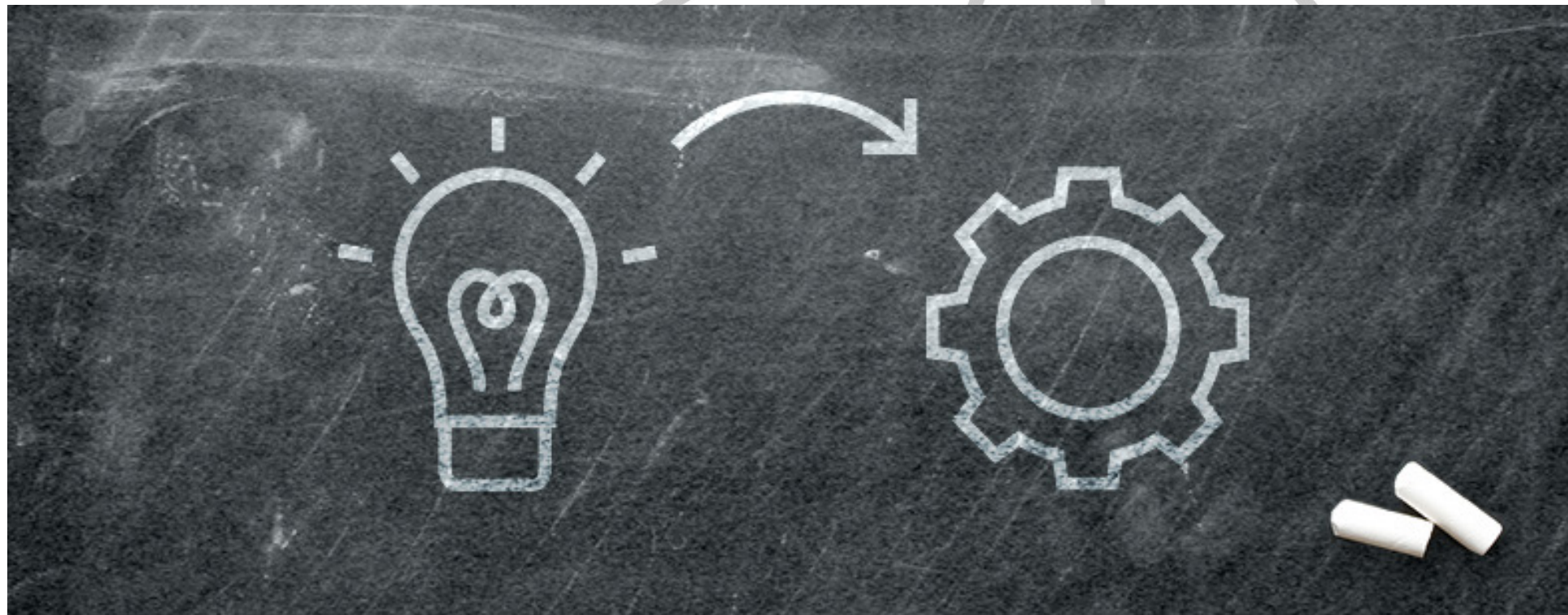


# CIRCULAR CONSTRUCTION PROJECTS IN PARKSTAD

- SUPERLOCAL
- DRIVE o
- Digital Deconstruction
- Re Use Materials
- GTB-Lab
- Resourcehouse



# FROM PILOT TO CIRCULAR PARKSTAD





# AMBITION REGION PARKSTAD

## The National Centre for Circular Building

*For the reuse of resources: Parkstad Urban Mine*



# What's next: Future Deal Parkstad

After Region Deal 1.0 en IBA Parkstad:

- New Strategic Agenda 2022-2030 – with Circular Building
- New Narrative for Parkstad
- Broad Social Coalition (horizontal collaboration)
- Organizational Power
- Vertical Collaboration  
(Province, National Government & EU)