

WELCOME TO THE NORTH-WEST EUROPE PROGRAMME INFO DAY

Manchester, Thursday 9th March

Welcome to the Info Day

Led by Sam Lucas – Head of Interreg UK

Introduction to NWE

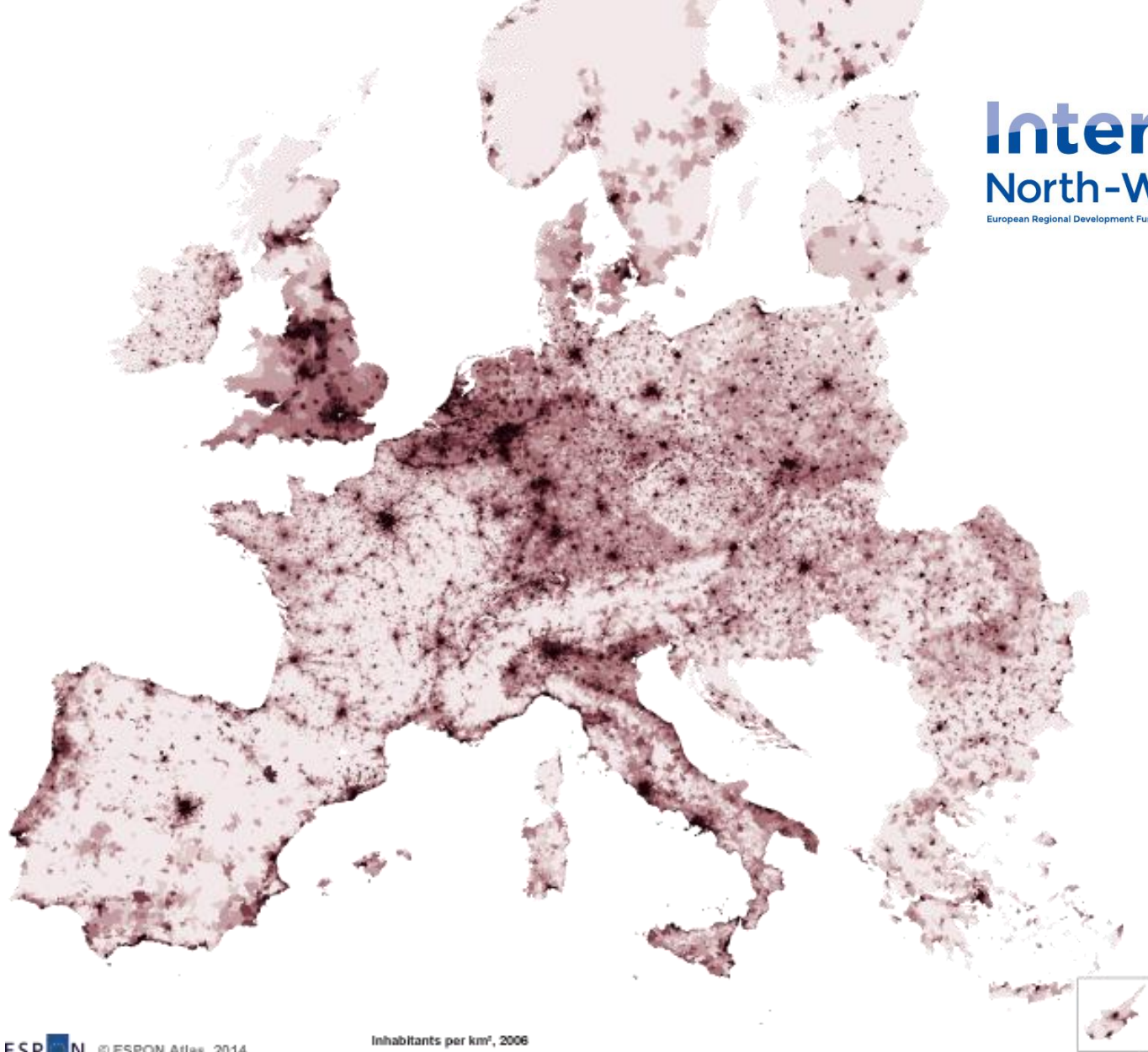
Led by the Joint Secretariat

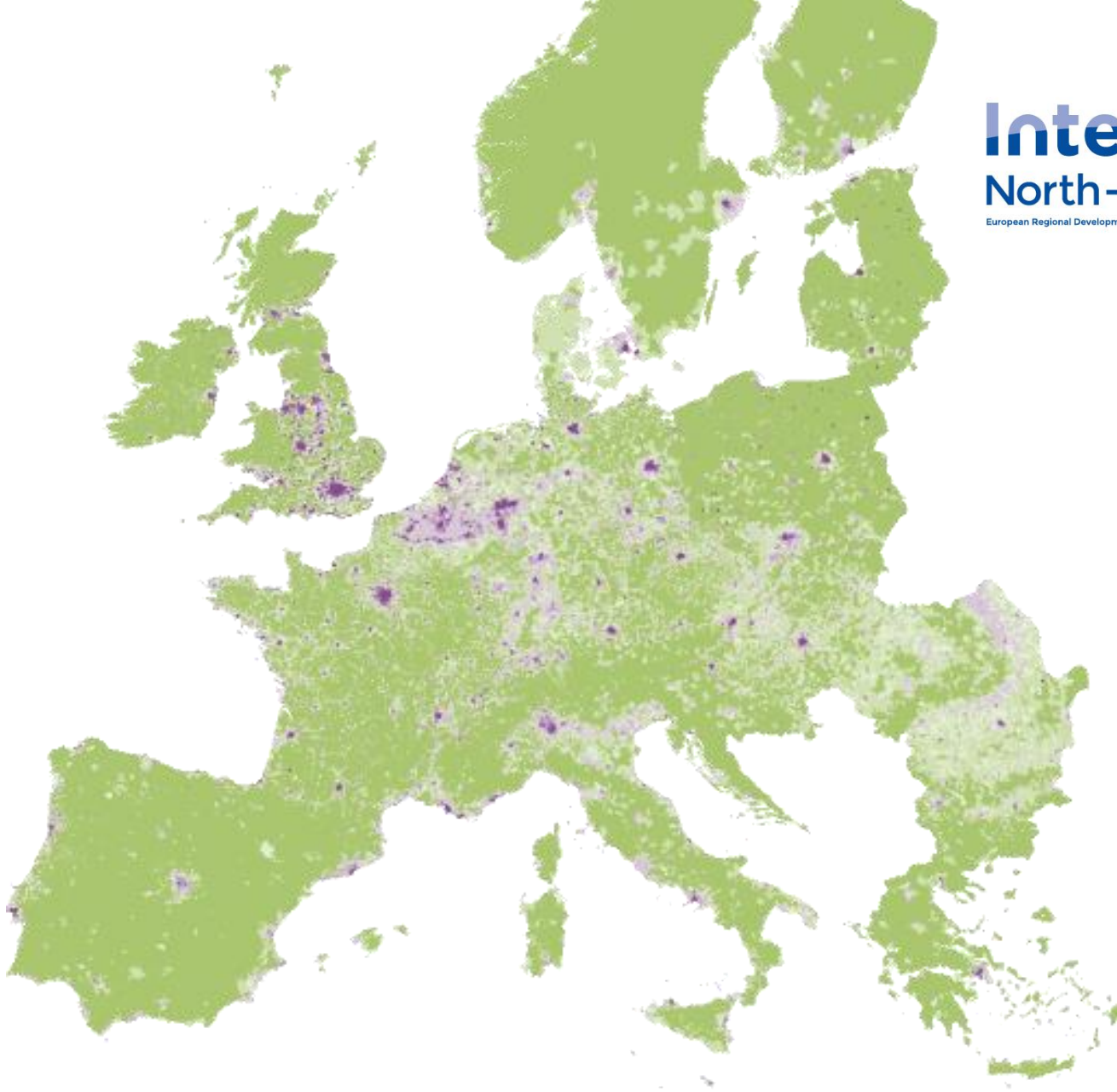
The Interreg NWE Programme : themes, specificities, results

Alexandre Colombani and Matthew Thompson
Joint Secretariat



Investing in Opportunities





Share of non-artificial land (%)

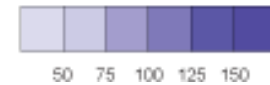




GDP (millions of Euro in 2011)



GDP per capita in % of the EU average





**The NWE area
2014-2020**

**372 million
euros**

**60% co-
financing**

4 reinforced orientations :

+Thematic focus

+Results

+Long term results

+Cooperation



Innovation

Helping enterprises innovate

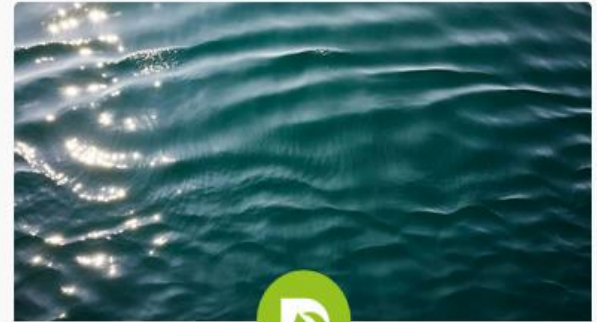
INNOVATION



Low carbon

Supporting the shift towards a low carbon economy in all sectors and promoting sustainable transport

LOW CARBON



Resource & materials efficiency

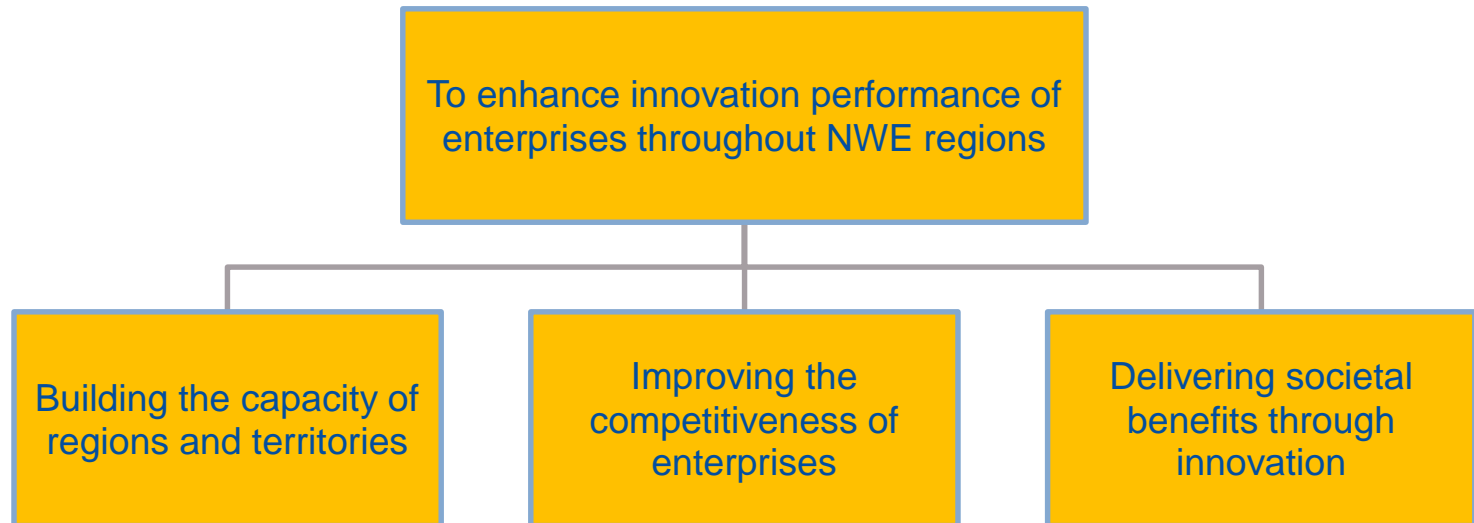
New ways to produce more value with fewer materials

RESOURCE & MATERIALS
EFFICIENCY



Innovation

Priority 1 : Innovation



Boost4Health – B4H

BE|DE|ES|FR|NL|UK

Challenge

- Big differences in health care systems
- Lack of knowledge on internationalisation
- Product validation under different regulations

Objective

- B4H aims to stimulate international growth and innovation capacity in the health science sector

Result

- 300 SMEs supported through coaching and matchmaking, to help bring new products to market



Priority 1

Step 1	Applications received	Eligible applications	Approved applications	Success rate
Call 1	38	36	8	22 %
Call 2	42	40	4	10 %
Call 3	30	30	5	16%
Call 4	29	29	MC6	MC6

Step 2	Applications received	Approved applications
Call 1	8	5
Call 1 & 2	3	1
Call 2 & 3	2	MC6

€17.4m ERDF allocated
= 13% of priority budget
= **€113m ERDF still remaining**



Low Carbon.

Priority 2 : Low Carbon

To facilitate the implementation of low carbon, energy and climate protection strategies

To facilitate the uptake of low carbon technologies, products, processes and services in sectors with high energy saving potential, to reduce GHG emissions in NWE

To facilitate the implementation of transnational low-carbon solutions in

E=0: Desirable, warm, affordable homes for life

FR|LU|NL|UK

Challenge

- Poor energy performance of residential buildings
- Current retrofit measures are piecemeal
- Lack of holistic policies with compartmentalised funding

Objective

- E=0 aims to support the creation of a sustainable market for net zero energy retrofits across NWE

Result

- 25% cost reduction in E=0 approach to boost its roll out
- 41 buildings retrofitted, 5 archetypes demonstrated



CHIPS :

Cycle Highways Innovation for
smarter People Transport & Spatial Planning

BE | DE | NL | UK



Challenge

- Need to reduce CO2 emissions from transport
- Develop and promote cycle highways as an effective and cost efficient low carbon solution

Objective

- CHIPS aims to develop bicycle highways into a high quality and transnational mobility solution

Result

- Use of cycle highways increased by a factor of 1.5 to 3
- Reduction of 9.683t CO2-emissions per year



Priority 2

Step 1	Applications received	Eligible applications	Approved applications	Success rate
Call 1	29	26	8	31%
Call 2	25	22	7	31%
Call 3	28	27	8	30%
Call 4	13	13	-	-

Step 2	Applications received	Approved applications
Call 1	6	4
Call 1 & 2	3	2
Call 2 & 3	3	

€28.7m ERDF allocated
= 20% of priority budget
=€117m ERDF still remaining



**Resource & materials
efficiency .**

Priority 3 : Resource and materials efficiency

To optimise (re)use of material and natural resources in NWE by implementing new technologies, services, products and processes

AFTB:

Adhesive Free Timber Buildings

BE|DE|FR|IE|UK

Challenge

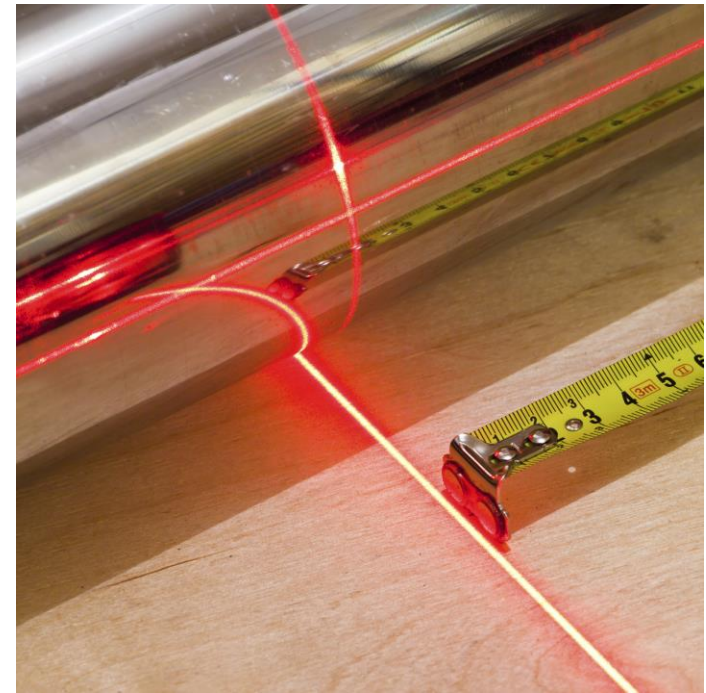
- Wasteful and harmful use of toxic adhesives in the manufacturing of Engineered Wood Products (EWPs) by the construction industry
- The majority of EWPs go to landfill or incineration
- Alternative using compressed wood not used in the real world

Objective

- AFTB aims to increase the uptake of adhesive free EWPs 100% reusable and recyclable by the construction industry

Result

- 200 m³ of adhesive free timber EWPs produced, saving 1200 kg of adhesives
- 10 businesses adopting the new technology and producing a range of adhesive free EWPs



Priority 3

Step 1	Applications received	Eligible applications	Approved applications	Success rate
Call 1	15	15	3	20%
Call 2	19	17	10	58%
Call 3	15	14	4	29%
Call 4	8	8	MC6	MC6

Step 2	Applications received	Approved applications
Call 1	1	0
Call 1 & 2	7	5
Call 2 & 3	5	MC6

€17.8m ERDF allocated
= 19% of priority budget
=€77m ERDF still remaining

Situation after 4 Calls

	Applications submitted	Eligible applications	Approved step 1	%	<i>Approved step 2</i>
Call 1	82	77	19	24%	9
Call 2	86	79	20	25%	8
Call 3	73	71	17	24%	-
Call 4	50	50	-	-	-

Call open from
18 April to 24 May 2017
www.nweurope.eu



Investing in Opportunities

Interreg



EUROPEAN UNION

North-West Europe

European Regional Development Fund

Thank you!

Top Tips

Led by UK NWE CPs

NWE UK CPs

United Kingdom



Emily Shephard
Contact Point

Tel.: +44 (0) 78 25 60 92 01
emily.shephard@communities.gsi.gov.uk

Institution: Department for Communities and Local
Government

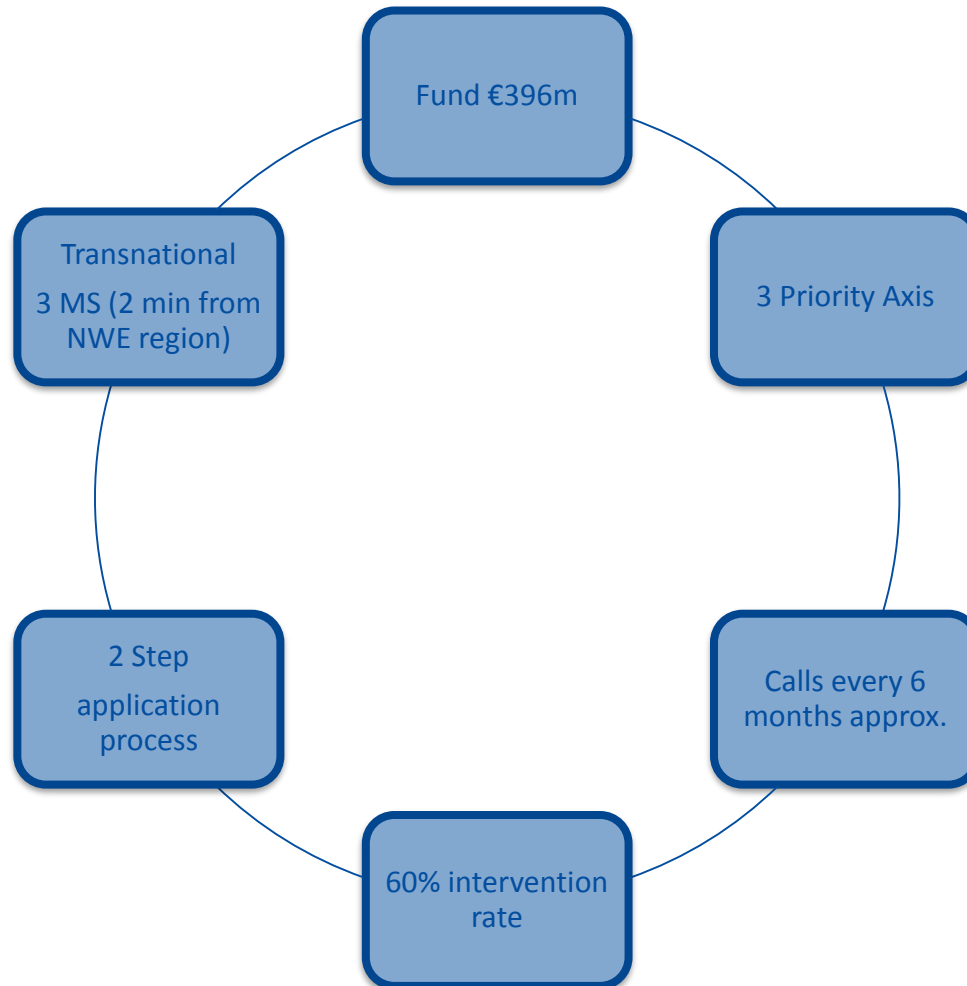


Vanessa Pilley
Contact Point

Tel.: +44 (0) 75 84 55 64 65
vanessa.pilley@communities.gsi.gov.uk

Institution: Department for Communities and Local
Government

NWE – Quick Facts



The Application Process

- In a Nutshell

Step 1

- Get in touch with your Contact Points
- Requirements: **3 countries** (2 from NWE region), a **transnational** idea, proven **need** for solutions, **value** for money, **tangible** results

Step 2

- Supported by the Joint Secretariat
- Requirements: full and firm partnership, extensive budget details, concrete plan for project life span, achievable results
- Must include indicators

Step 1 – Intervention Logic

Project Intervention Logic:

Value for money

Determines if the project budget is used according to the principles of:



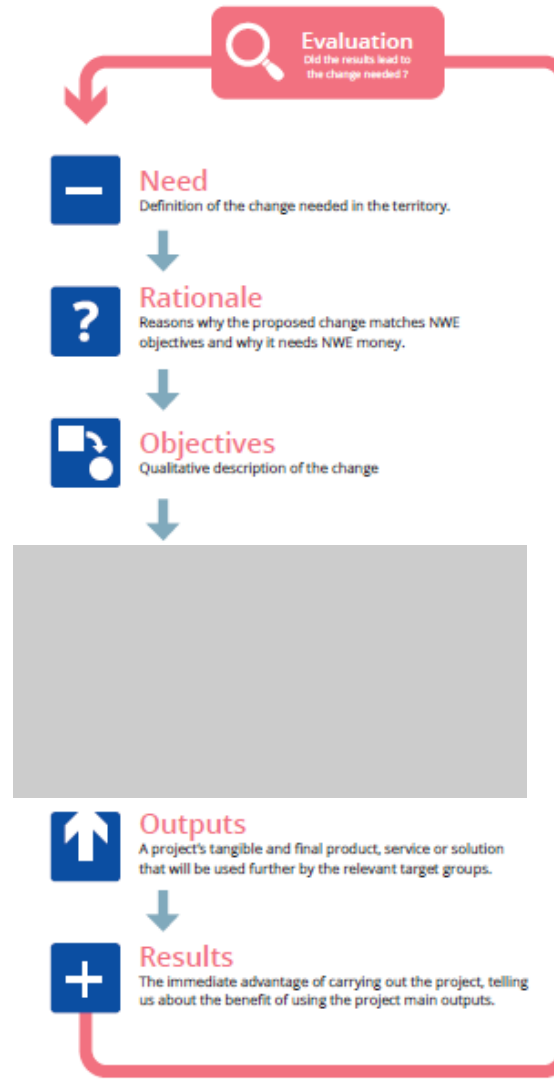
Economy
Minimising the costs of resources.



Efficiency
Getting the most from the available resources.



Effectiveness
Meeting the objectives and achieving the intended results.



Step 2 – Intervention Logic

Project Intervention Logic:

Value for money

Determines if the project budget is used according to the principles of:



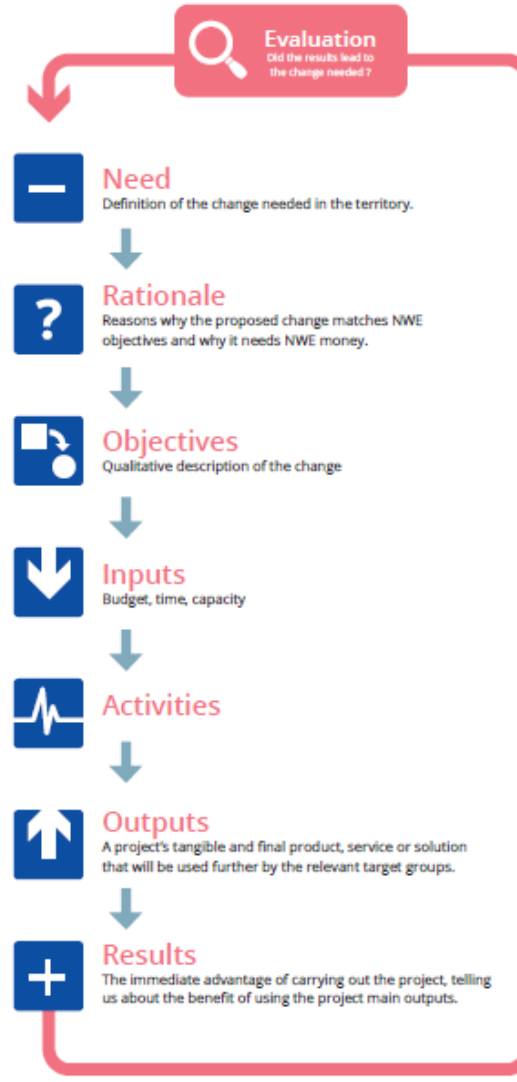
Economy
Minimising the costs of resources.



Efficiency
Getting the most from the available resources.



Effectiveness
Meeting the objectives and achieving the intended results.



Project Planner

Objective

What are you doing; for who; why? Value for money should be demonstrated.

Need

What is the big challenge or problem in the territory which your project addresses?

Demand / Market Failure

Why should public Interreg funds be used to address this problem? What is the need for public intervention, which will not be provided by the market? How does it match NWE priorities?

Project Planner

Actions

What activities will your project deliver, which are in support of the project objective? In each case, ask yourself whether the action is justified by the objective you have set yourself. Value for money should be demonstrated.

Results

What is the change your project will create? What tangible outcomes will your project deliver on the ground? Focus particularly on results that will last after the project has finished. Do these results address the original need or challenge identified? Include the societal benefit of your final product/services/solutions. Value for money should be demonstrated.

Project Planner



Partnership

Why this partnership? What does the transnational element of the partnership bring to the project?
All funded projects must involve partners from at least 3 different countries, 2 from within the NWE region, with a joint approach to tackle a common issue.

Risks


Any key risks should be identified and mitigated against.

Contact Details of the Lead Partner:

The NWE Homepage



Log in

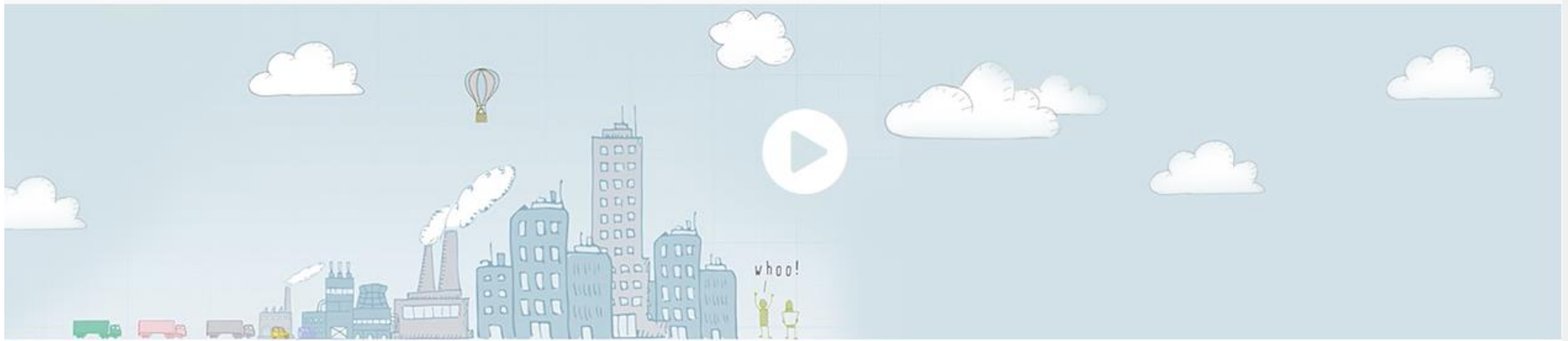
Search... 

- About the Programme
- Apply
- Projects
- Help & support
- News & events
- Contact us



Register to receive alerts Prepare for the fifth call for projects (open from 18/04 to 24/05)

SIGN UP



Interreg NWE Programme

Key Documents



Log in

Search...

[About the Programme](#) | [Apply](#) | [Projects](#) | [Help & support](#) | [News & events](#) | [Contact us](#)

[Glossary](#) | [Application resources](#) | [Implementation resources](#)

Application resources

Resources to help with your application gathered together in one convenient place.



Reference documents

Programme manual version 5 (EN, FR, NL, DE)



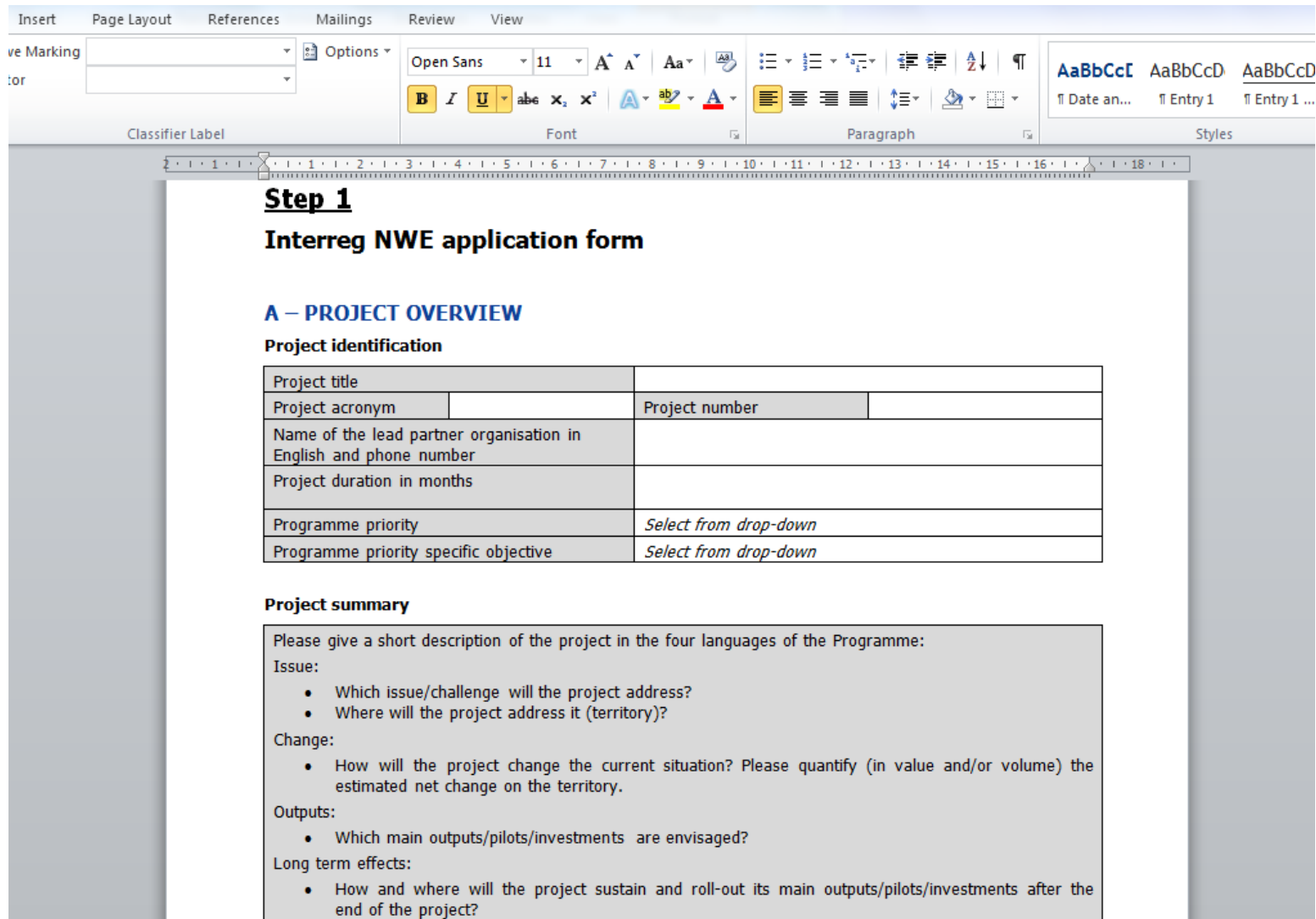
Cooperation Programme



Application Form step 1 (for reference only)



The Application Form – In Word



The screenshot shows a Microsoft Word document with the following content:

Step 1
Interreg NWE application form

A – PROJECT OVERVIEW

Project identification

Project title	
Project acronym	Project number
Name of the lead partner organisation in English and phone number	
Project duration in months	
Programme priority	<i>Select from drop-down</i>
Programme priority specific objective	<i>Select from drop-down</i>

Project summary

Please give a short description of the project in the four languages of the Programme:

Issue:

- Which issue/challenge will the project address?
- Where will the project address it (territory)?

Change:

- How will the project change the current situation? Please quantify (in value and/or volume) the estimated net change on the territory.

Outputs:

- Which main outputs/pilots/investments are envisaged?

Long term effects:

- How and where will the project sustain and roll-out its main outputs/pilots/investments after the end of the project?

The 'Golden Triangle'

Project objective
Please define precisely the objective of the project and what it aims to achieve (what, for whom, where)
<i>[500 characters]</i>

Project baseline
Please describe and quantify the project's baseline (current situation).
<i>[255 characters]</i>
Project result
Please quantify (in value and/or volume) the estimated net change on the territory.
When the project ends
<i>[500 characters]</i>
5 years after the project ends
<i>[255 characters]</i>
10 years after the project ends
<i>[255 characters]</i>

Building the Golden Triangle

Objective

What, who, where?

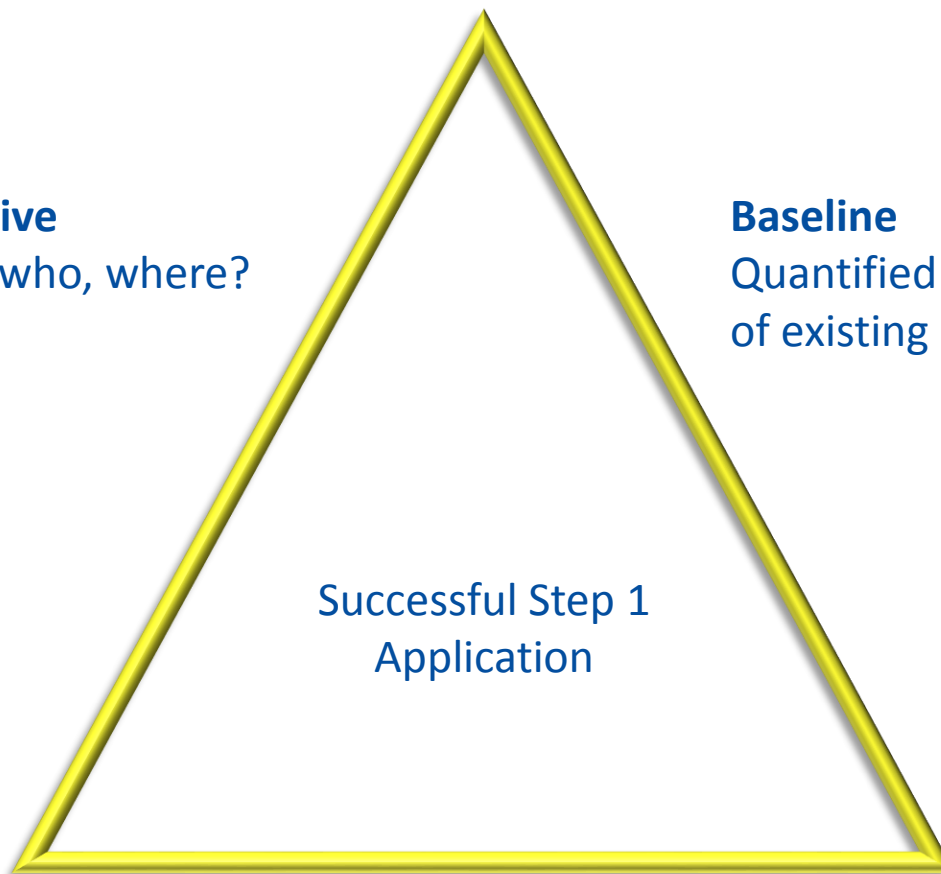
Baseline

Quantified summary
of existing issue

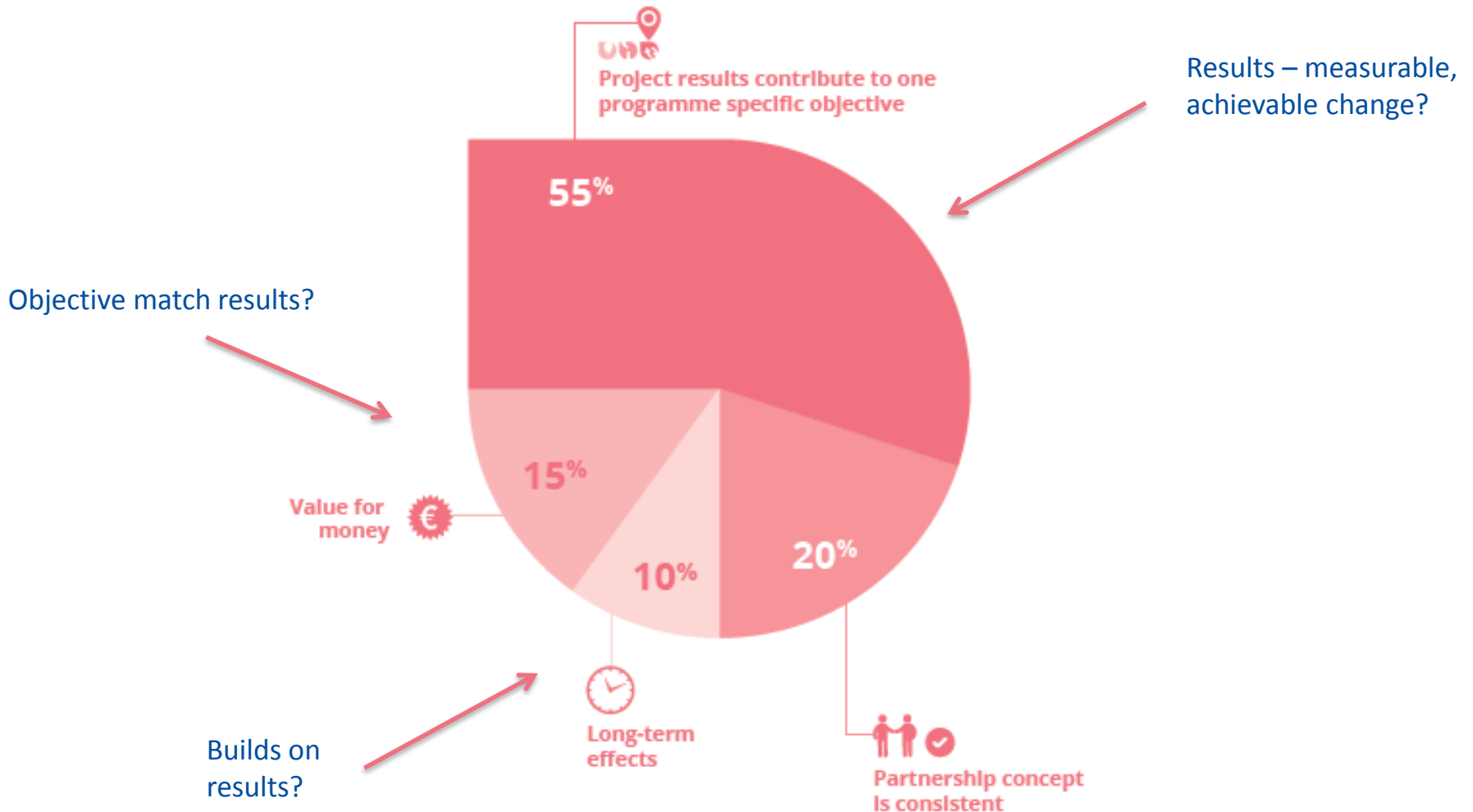
Successful Step 1
Application

Result

How will you
measure change?



Why is it so important?



An Approved Example

Project objective

Please define precisely the focus of the project and what it aims to achieve (what, for whom, where)

The Towards Adhesive Free Timber Buildings project aims to 'Create the **required conditions** for increased uptake of adhesive free Engineered Wood Products by the construction industry.'

Project baseline

Please describe and quantify the project's baseline (current situation).

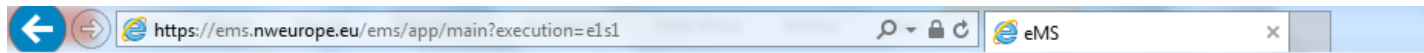
Production 520,000 m³ Cross Laminated Timber in 2014; Production **3.5 million m³** of glulam in 2013; 1m³ of glulam = 6kg of adhesive; Currently **0m³** of adhesive free EWPs using compressed wood dowel are produced globally. Timber construction waste to landfill=15 million tonnes per year in EU. Timber construction waste recycled (includes incineration for energy capture) = 15 million tonnes per year in EU.

Please quantify (in value and/or volume) the estimated net change on the territory

- **When the project ends**

200 m³ of adhesive free timber Engineered Wood Products (EWPs) will be produced, saving **1200 kg** of adhesives. Commitment will be evidenced from 4 EWP manufacturers, 4 construction end user companies, 2 architectural designing companies and 2 structural design firms as a proxy measure of the move towards more production of adhesive free EWPs in the future.

Apply online - eMS



Interreg 
North-West Europe
European Regional Development Fund

 Login
 Registration
 FAQ

EN 

EMS 
electronic
monitoring
system

developed by
cpb
software

INTERact 
COOPERATION



European Regional Development Fund
3_2_1_NWE

Login

Username*

Password* Username required

Login Register Forgot password

Support:

If you need technical support with your application submission please contact us using ems@nweurope.eu.

By logging into the system you agree to the following Terms and Condition:

- [EMS Terms and conditions.pdf](#)

Some eMS tips

- Read the guidance (application resources)
- Complete large sections of text in Word document
- Use Notepad (or Mac equivalent) to remove unnecessary characters
- Complete each page and save on system
- If you are struggling, contact the eMS help team - ems@nweurope.eu

Q&A Session

Success Story

Led by Matt Thompson, Joint
Secretariat



ACE-Retrofitting: Accelerating Condominium Energy Retrofitting

Matthew Thompson



Investing in Opportunities

ACE- Retrofitting

BE | DE | FR | NL | UK

Summary:

The project aims for improved energy classification for 15,000 households per year

- Inspired by existing web-based CoachCopro guidance tool;
- Up-grade and adapt tool for NWE territories;
- Toolkit for co-owners and condominium managing;
- Coaching framework for the building professionals and a governance arrangement for local authorities;
- Roll-out supported by a European campaign to support the retrofitting of ageing condominiums in NWE

www.nweurope.eu/ace-retrofitting

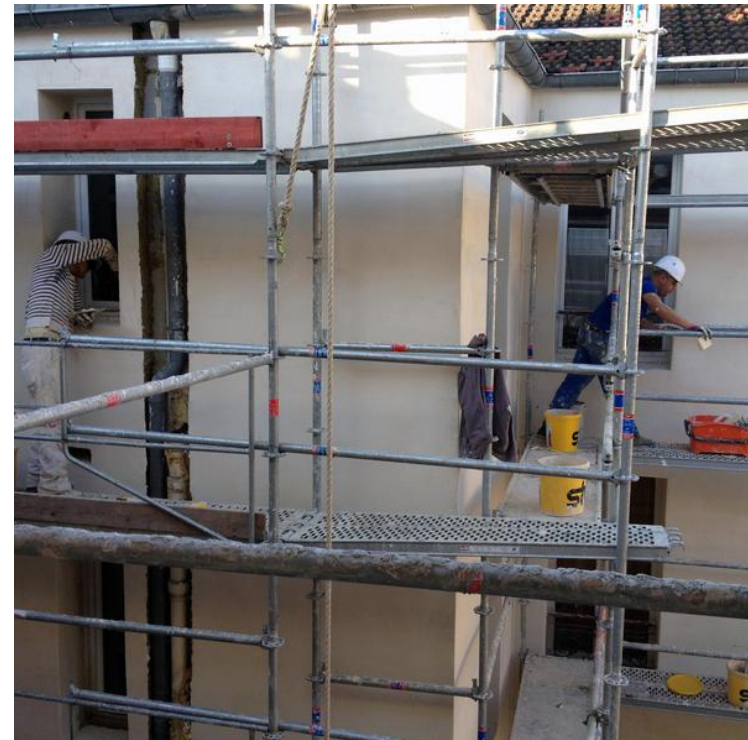
1. Need: Definition of the societal change needed in the territory

Why is the project needed?

Why is it needed in NWE?

What is the market failure ?

- Condominiums are not energy efficient
- No common approach for owners
- No motivation for suppliers



2. Rationale: Reasons why the proposed change matches NWE objectives and why it needs NWE money

Does the project fit in the programme?

- Focus on bringing together supply and demand side actors
- Need for coordinated effort by local authorities
- High concentration of ageing condominiums = high GHG
- Priority 2: Specific Objective 2 = facilitate the implementation of low-carbon strategies (CoachCoPro tool)



3. Objectives: Qualitative description of the change

- What does your project aim to achieve?
- Who is your project targeting?

Project objective

- Please define precisely the **focus** of the project and what it aims to achieve (what, for whom, where)

*

Focus: To increase and accelerate the number of shared retrofitting measures taking place in privately owned condominium building blocks |

What: create a governance arrangement facilitated by LAs that links the demand and the supply sides |

For whom: demand side (owners, residents), supply side (building professionals), LAs (facilitators) |

Where: primarily in the 6 partner LAs, then across NWE and Europe in other LAs

4. Inputs: **What inputs are needed?**

Budget, time, capacity?

- Capacity (financial, institutional, staff...)
- Costs are as realistic as possible
- Benchmark for reasonable budget
- Costs match action plan
- Are the costs eligible and in line with rules?



5. Activities: How to do it? Work packages, investments, activities

- 3 mandatory workpackages
- 3 Implementation
 - The “demand side”: supporting owners and condominium managing structures
 - The “supply side”: federating building professionals
 - Linking the demand and supply sides in a new governance arrangement facilitated by LAs

6. Outputs: A project's tangible and final product, service or solution that will be used further by the relevant target groups

- Capacity-building model for LAs to replicate the governance arrangement on their territory
- Toolkit facilitating the energy retrofitting of their condominiums
- Framework for building professionals for the energy retrofitting of condos
- ICT tool for LAs to accelerate the energy retrofitting of condominiums, building on the existing CoachCopro tool
- Governance arrangement linking demand and supply sides facilitated by LAs to retrofit condominiums

7. Results: The societal benefit of the project's outputs

What will the project achieve at the end?
And then what...?

- What is the baseline ?
- Is it measurable?
- What is the result?
- Does the result match the baseline?



Project baseline

- Please describe and quantify the project's baseline (current situation).

*

In NWE: % annual renovation rate for private condominiums: below 0.5 |
Baseline for the 6 partner LAs: number of private condominiums: 100,000; number of households: 1.5 million



Project result

Please quantify (in value and/or volume) the estimated net change on the territory

When the project ends:

In the 6 partner LAs:
% annual renovation rate for private condos: 1.5 |
Annual nb of private condominiums renovated: 1,000 |
Annual nb of households with improved energy classification: 15,000 |
CO2 emissions avoided per year: 45,000 tonnes of CO2eq |
Total nb of owners coached by LAs: 7,500 |
Total nb of building professionals trained by LAs: 1,000 |
Total nb of energy retrofitting condominium plans adopted: 700 |

Total nb of LAs implementing the ACE governance arrangement: 25

Baseline, result or neither?

- The 2011 White Paper gave significant attention to urban transport. GHG from transportation have a negative impact on health.
- *Result: After 5 years, 50 cities involved with 100 users per day.*
- Municipalities lack the tools for qualitative implementation of climate policy.
- *Result: 27 municipalities will save 20% CO2 by 2020.*
- At present the parties reach and sustainability benefit of 42 million euros. This can be greatly improved and that is why they start with this project.
- *Result: We go from 42 million to sustainability impacts to 82 million. It's a start. Learning from each other and make visible effects indicate acceleration of the sustainability approach.*

1:1 & Networking Session