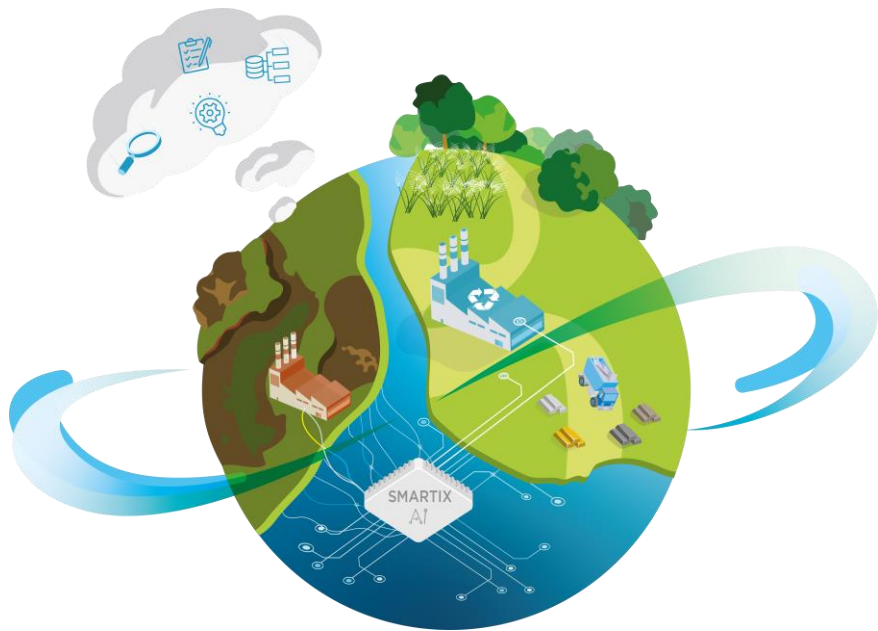


2nd meeting of the Advisory board October 4th, 2022



Hybrid meeting –


*OVAM's office
Mechelen, Belgium*

and online

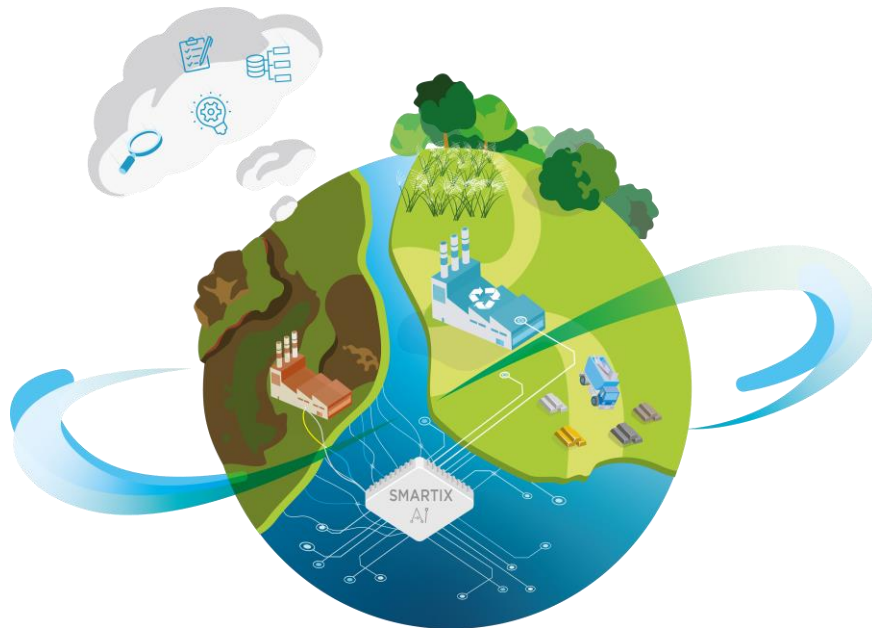
AGENDA

09h30 – 10h00	Welcoming coffee and online connection
10h00 – 12h30	<p data-bbox="311 297 1889 332">Presentations of the last results of NWE-REGENERATIS and discussions (hybrid):</p> <ol data-bbox="311 382 1889 1263" style="list-style-type: none"><li data-bbox="311 382 1889 418">1. Recall of NWE-REGENERATIS project – SPAQuE<li data-bbox="311 475 1889 596">2. REMICRRAM – a methodology for resource recovery from Past Metallurgical Sites and Deposits (PMSD) and SMART PHOENIX - quick screening software to evaluate the valorization potential of a PMSD for the recovery of materials, metals, soil and land – SPAQUE<li data-bbox="311 654 1889 689">3. MESIS – a harmonized inventory structure of PMSD – ATRASOL<li data-bbox="311 746 1889 868">4. SMARTIX - a Decision Support Tool (DST) based on artificial intelligence and algorithms to choose the best valorization options for materials and metals present on site – Technische Hochschule Köln and IXSANE<li data-bbox="311 925 1889 961">5. Teesside site (pilot site in UK): chemical and biological metal recovery – Cranfield University<li data-bbox="311 1018 1889 1053">6. Open Access Platform for stimulating the market for recovery of materials from PMSD – ATRASOL<li data-bbox="311 1110 1889 1175">7. The input of the geophysics for the NWE-REGENERATIS methodology and focus on Campine site – University of Liège and OVAM<li data-bbox="311 1232 1889 1268">8. Discussions with the attendees/ Conclusions

AGENDA

12h30 – 13h15	Lunch at OVAM's office
13h15 – 14h15	Transport from OVAM office to Campine site Address: Nijverheidsstraat 2 2340 Beerse, België
14h15 – 16h00	Visit of Campine site and the recycling facilities (in-person only) 
16h00 – 17h00	Transport back to the OVAM's office
17h00	End of the meeting

Presentation of the NWE-REGENERATIS project



Marta POPOVA

Project manager
SPAQUE

Project idea and current challenges

Title: **NWE-REGENERATIS** “ *REGENERATI*on of past metalurgical Sites and deposits through innovative circularity for raw materials ”

- Increasing of the need of raw materials
- 13% of 2.5 million polluted sites are **Past-Metallurgical Sites and Deposits (PMSD)**
- **± 100.000 sites** with a metal recovery potential
- Potentially high **metal content in residues**
(e.g. aggregated material with high ferrous metal content, scraps, white and black slags)
- European and regional policies



Project idea and current challenges

Gaps linked with current challenges

- No links between **historical studies and tailings quality**
- Missing information on the economic potential of PMSD : **quantity, quality, value of materials and land**
- Expensive **traditional characterization methods**
- **Profitability risk** associated with the cost of the extraction processes of metals and their future use

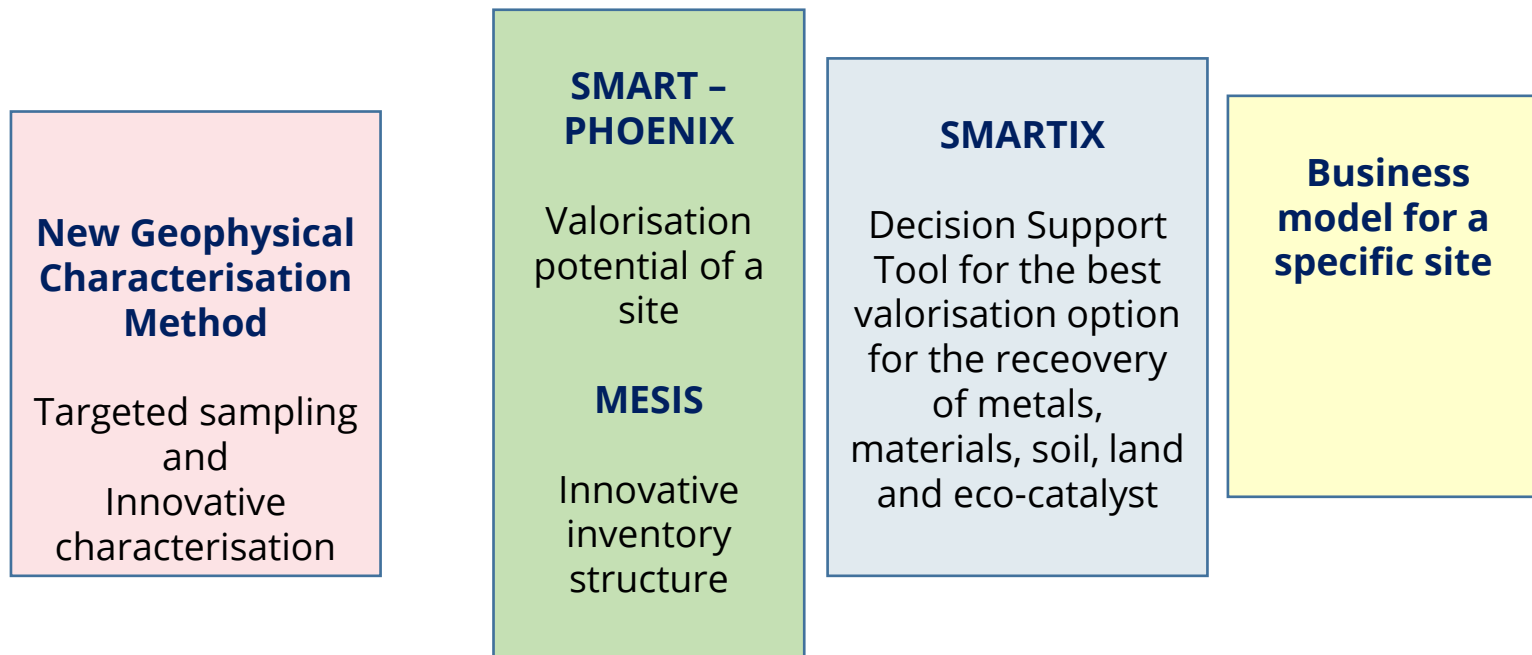


NWE-REGENERATIS solutions:

- ✓ Links between historical studies and **quality of post-mining residues**
- ✓ Links between **post-mining residues and metal extraction processes**
- ✓ Innovative cost-effective site **characterization** method
- ✓ New inventory structure for PMSD sites
- ✓ Open source **decision support tool** (based on AI) - best options for the site **valorisation**
- ✓ Optimized **business model**

The project

Methodology REMICRRAM



Final users: public/ private PMSD owners and managers, public agencies, raw materials' users, engineering companies

The project

Pilot sites

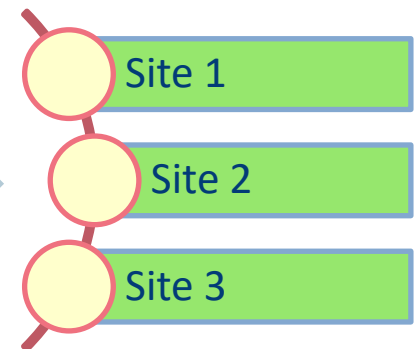
- La Louvière (Wallonia, Belgium)
- Pompey (France)
- Teesside (UK)

6 additional sites : La Campine, STPI, Nyrstar, Vieille Montagne, Arcelor site, Bois St Jean



Input data from Pilot sites

- Historical studies
- Prospection and investigation
- Lab tests & pilot tests
- Smart links between different expertises



WHY?

✓ Allow a **better management** of the past-metallurgical sites

✓ **Improve the management of uncertainties**

✓ Develop a **database of residues/ deposits** and identify optimal recovery methods

✓ **Reduce the costs of rehabilitation** of sites

✓ Enable the integration of optimised management in the promotion of the **circular economy**

The project partners

14 partners

- Wallonia: SPAQuE, CTP, ULiège, ATRASOL, DUFERCO
- Flanders : OVAM
- France : BRGM, Ixsane, Team2, JUNIA
- UK : MPI, University of Cranfield
- Germany : TU Köln, BAV

➤ 35 Associated partners (observers)



DO YOU WANT TO COME ABOARD?

HOW?

- Join the working group on **knowledge exchange**
- Participate at **the policy task force**
- Attend a workshop about **knowledge exchange, policy adaptation**
- Subscribe to **the open access platform** for global regeneration market
- Get in touch if you want to **provide training courses**



Follow NWE-REGENERATIS

[NWE-REGENERATIS project site](#)

[@NWE_REGENERATIS](#) (Twitter)

[@regeneratis-project](#)
(Linkedin)

Join the Group of stakeholders and/ or
subscribe to the NWE-REGENERATIS
Newsletter
[SIGN UP!](#)

The screenshot shows the LinkedIn profile page for the 'NWE-REGENERATIS project'. The page header includes the LinkedIn logo, a search bar, and navigation icons for Home, My Network, Jobs, Messaging, Notifications, Me, Work, and Learning. The profile name is 'NWE-REGENERATIS project' with a 'Content admin view' link and a 'View as member' button. The main banner features a landscape image with the text 'REGENERATIS - REGENERATION of Past Metallurgical Sites and Deposits through innovative circularity for raw materials'. Below the banner, the project name 'NWE-REGENERATIS project' is displayed, along with a description: 'To optimise (re)use of material and natural resources in North West Europe' and 'Environmental Services - Liège, Région wallonne - 475 followers'. A 'Share Page' button is also present. The left sidebar shows analytics for the last 30 days: 80 search appearances (up 66.7%) and 18 unique visitors (up 28.6%). The main content area has a 'Start a post' section with options for Photo, Video, Poll, and Write article, and a 'Page posts' section with filters for Hashtags, Employee posts, and Ads. The right sidebar includes a 'Grow your followers' section with a 'Invite connections' button.

Interreg



EUROPEAN UNION

North-West Europe

NWE-REGENERATIS

European Regional Development Fund

Marta POPOVA
Project manager
SPAQuE

Thank you!

m.popova@spaque.be



Meeting point