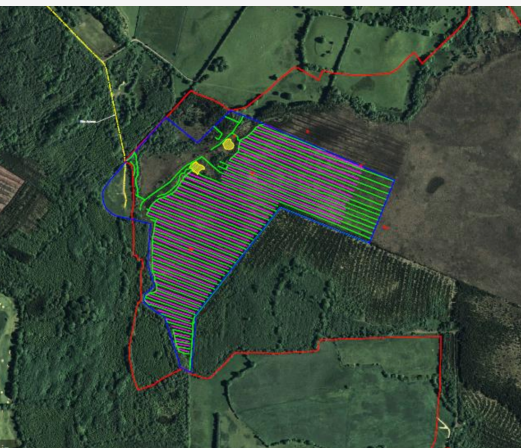




# PEATLANDS FOR CLIMATE AND BIODIVERSITY INTERREG NWE CARE-PEAT



IRELAND



## Cloncrow Bog Natural Heritage Area

### Introduction

Ireland has approximately 1.46 Mha of peatlands representing over 20 % of the total land surface. The two dominant types of peatlands are blanket bogs (71%) and raised bogs (29%), which originally covered over 1 million ha. Today about 85 % of all peatlands are degraded through human activities via conversion to agriculture (mostly grassland) and forestry, and extraction for energy and horticulture.

The Cloncrow Bog Natural Heritage Area is approximately 230 ha while the project pilot site focuses on approximately 33 ha within areas of formerly drained high bog (26ha) and cutover bog (7ha). The pilot site was impacted by over 28,000 m of extensive ditching in the high bog and cutover as well as legacy effects of bog cutting. This scenario provided an opportunity for restoration works to be included as one of the sites within the frame of the Interreg NWE Care-Peat project.

The site is located in the midland regains thus the primary impacts to the site are primarily physical degradation. The peat within the project area is relatively intact but has suffered drainage and drying as a result of the ditches. Former peat-cutting has entirely ceased at the site as a result of its designation as an NHA. Areas of cutover have been reclaimed for agricultural purposes around the site. Heather (*Calluna vulgaris*) has taken over in the drained areas of the bog and sphagnum development is impeded due to the impaired eco-hydrological status of the project area.



### Issues & key challenges

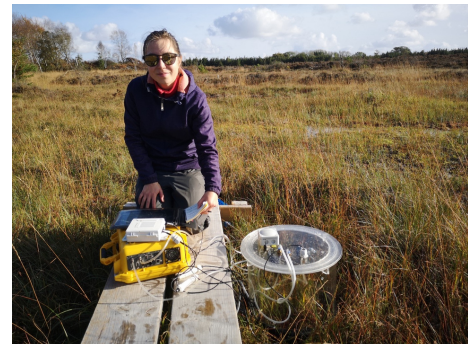
Communicating with landowners about rewetting

### Outcomes & benefits

- Restoration works were completed in Autumn 2020 and had immediate effects of raising the water level to within 10cm of the surface
- Improvement of water conditions resulted in a rapid response by peatland-associated vegetation in both areas of the pilot site

### Lessons learnt

- Proper hydrological planning before restoration is key to success
- Community involvement and demonstrations reduced anxiety toward future rewetting



### Legal Status

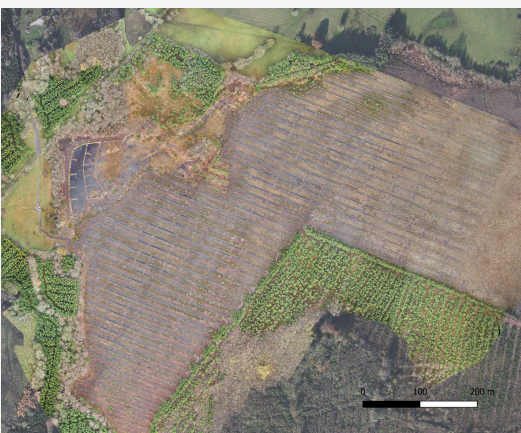
- Natural Heritage Area (NHA)

### Habitats

- Raised bog
- Degraded raised bog
- Cutover bog
- Humid and improved grassland
- Downy birch woodland
- Commercial forestry

### Management

- National Parks and Wildlife Service
- Coillte (state forestry company)
- Private Landowners



OLLSCOIL NA GAILLIMHÉ  
UNIVERSITY OF GALWAY



An Roinn Tithíochta,  
Rialtais Áitiúil agus Oidhreachta  
Department of Housing,  
Local Government and Heritage

### Information sources

- <https://www.npws.ie/protected-sites/nha/000677>
- <https://vb.nweurope.eu/projects/project-search/care-peat-carbon-loss-reduction-from-peatlands-an-integrated-approach/>
- <https://sites.google.com/site/terrymorley/current-research>



Eurosite Factsheet

www.eurosite.org  
info@eurosite.org

Interreg   
North-West Europe  
Care-Peat  
European Regional Development Fund

Care-Peat project  
<https://nweurope.eu/care-peat>