

Interreg North-West Europe DGE-ROLLOUT

WP T1 Deliverable D4.1 Decision
making tool

Estelle Petitclerc (RBINS-GSB)

Contributors

Jeroen Van der Vaart (TU-Da)
John Reinecker (Vulcan Energy)

1/8/2023

Table of contents

- Introduction..... 3
- DGE-ROLLOUT page on EGD!..... 3
- The decision-making tool 3

Introduction

This deliverable intends to create a decision support system for potential DGE investors. This tool combines several DGE-ROLLOUT important results in the framework of the WPT2 and WPT1 and will support investors on the decision process by following a series of crucial questions to answer during a DGE project development with regard to regional specificities & heterogeneities.

DGE-ROLLOUT page on EGDI

The DGE-Rollout webpage on EGDI belongs to the GeoEnergy section (see figure below). The project is referenced on the GeoEnergy page. It is accessible through this link: <https://www.europe-geology.eu/scientific-themes/geoenergy/dge-rollout/>

The decision-making tool is immediately accessible on the DGE-ROLLOUT project section.

The decision-making tool

The Decision-making tool (D1.1.4) developed in the framework of the WPT1 (Figure 1), reveals step by step which questions (in blue boxes) a potential DGE investor is recommended to answer before the drilling of a deep geothermal well, following three main axes: Economics, Geology/Technical, and Regulatory framework/Public acceptance.

A positive answer leads to the next question. If the answer is “no”, actions are suggested (green boxes) or tools and helpful reports are provided, which have been developed within the DGE-ROLLOUT project (light green boxes).

In total 5 light green boxes give direct access (by clicking on it) to related results of DGE-ROLLOUT:

- 3 reports on Financial Risk Management (D1.3.2), Investors Profiling (D1.2.2) and Legal Framework (D1.3.1).
- the DGE-ROLLOUT webtool (D1.1.6) where the surface, subsurface data and hotspots maps can be displayed
- the exploration toolbox report developed in the scope of the WPT2, which aims to help DGE investors and local authorities to take the optimal steps to find opportunities in the subsurface to develop a DGE project.

DGE-ROLLOUT Decision Making tool

A workflow for DGE potential investor with integrated tools developed within the project

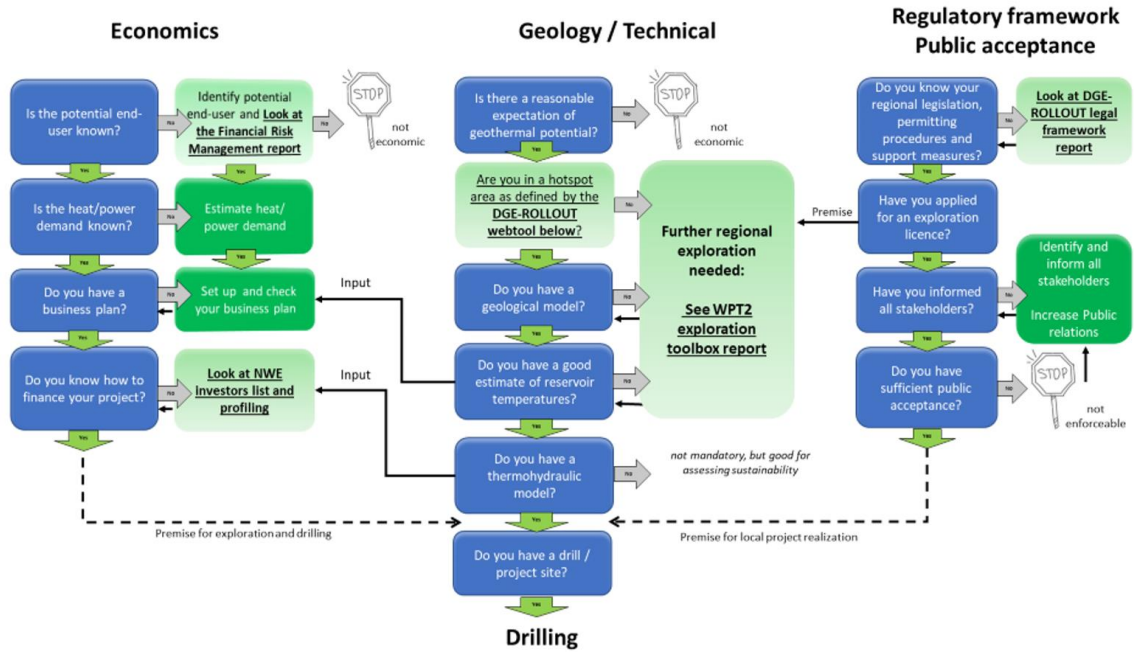


Figure1: the decision making tool

PROJECT PARTNERS



PROJECT SUP-PARTNERS

RUHR
UNIVERSITÄT
BOCHUM

RUB

GeoThermal
ENGINEERING

MORE INFORMATION

Dr Martin Salamon (Project Manager)

Martin.Salamon@gd.nrw.de

+49 2151 897 230

www.nweurope.eu/DGE-Rollout



@DGE-ROLLOUT

SUPPORTED BY

europiZe UG

Dr Daniel Zerweck

+49 176 6251 5841

www.europize.eu

europiZe
realising projects