

Provide information on the quality of the reuse process



Image source: Bellastock

The "Safety in Circularity" attestation

- **Context:** many companies have developed skills related to the reconditioning of second-hand products and materials. However, their practices are not formally recognised due to the absence of acknowledgement of these skills and the rigor of their approach.
- **The challenge:** propose an attestation that covers the entire process of reuse (demolition, transport, treatment and storage of materials), guarantees the reliability of the transmitted information and informs prescribers and potential users of the aptitude for reuse of these materials according to certain potential use scenarios.
- **Location:** Belgium
- **Reclaimed materials:** all types of materials are potentially concerned by the attestation. To date, faucets, sanitary fittings, raised floors and protective railings are concerned. Other typologies will be developed according to market demand.

Contents

Origins of the attestation

An attestation for the process, not the product

An attestation that increases the reliability of the information delivered to the stakeholders in a project

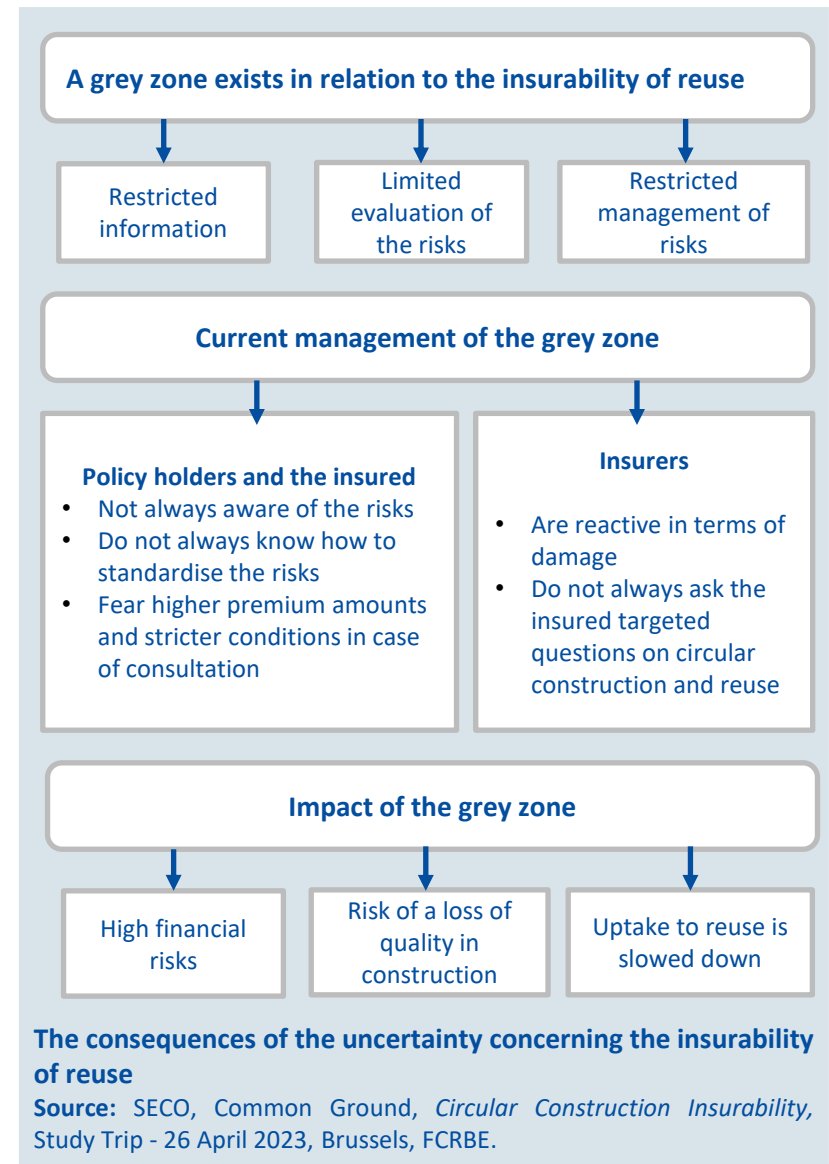
Particulars for obtaining the attestation

Content of the attestation

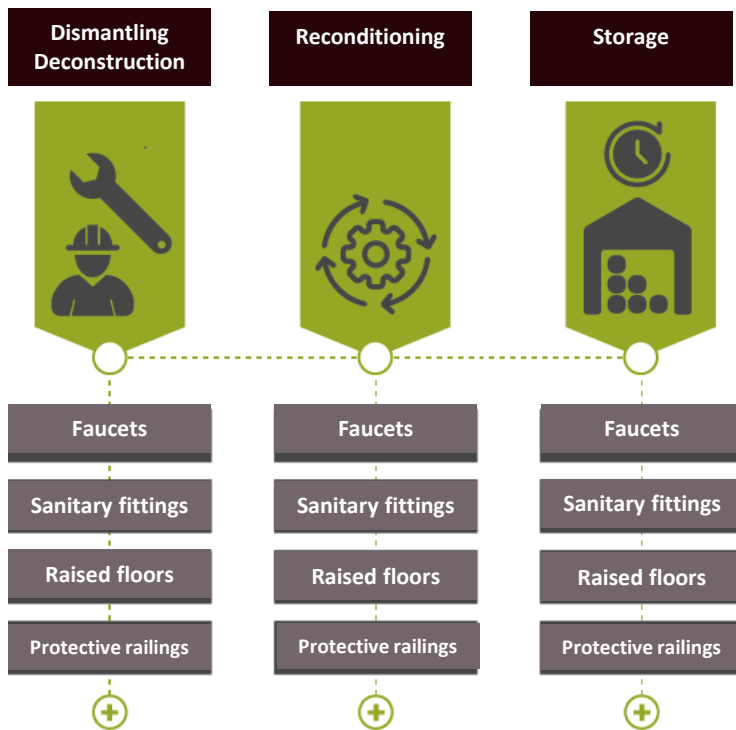
Conclusion on good practices related to insurance

Origins of the attestation

- **Three partners:** BatiTerre, Jacques Delens and SECO Belgium winner of Be-Circular 2020, observing that one of the major barriers for reuse is the lack of reliable information concerning the materials (contrary to new materials that benefit from detailed sheets).
- **BatiTerre** who recovers and offers materials for reuse, had to convince clients, architects and entrepreneurs of the professionalism of their practices and of the quality of the information concerning the materials made available again for a new use.
- **Jacques Delens** (BESIX Group) is a general construction and real estate development company with many construction sites in the Brussels region. As clients impose the integration of reused elements, the company needed to cover the risks associated to this process.
- **SECO Belgium who bears the attestation**, is a recognised stakeholder in terms of standardisation of risks and quality control on all types of structures and buildings while also treating the quality control of materials and of processes set up at company level. In 2020, with its partner Common Ground, it also coordinated a large number of working groups bringing construction companies, clients and insurers together to identify and try to overcome the insurance barriers linked to the reuse of construction materials. It appeared that there is a grey zone related to the practices that insurance actually covers: the information that is circulating is restricted and the evaluation of the risks is limited due to the lack of feedback.



An attestation for the process, not the product



In order to better manage the risks linked to the reuse of building materials, it is necessary to improve the quality of the information delivered to insurers, prescribers, construction companies and clients. This is indeed one of the objectives of the attestation.

The attestation relates to the process, and not to the product. Indeed, a reuse product is too specific. The situations linked to the first use regularly differ from one project to another. It is therefore necessary to move away from the product to set up a general approach that applies to a process. The logic is to assess the quality of the practices implemented by certain professionals (deconstructors, resellers who recover and recondition certain materials, general or specialist companies, etc.). Until now, these approaches were known, but no stakeholder had sought to differentiate the good practices from the bad by assigning an attestation that provides information on the quality of the process followed during the various phases that precede actual reuse: dismantling, transportation, reconditioning and the storage of materials.

The attestation validates the quality of the approach adopted by the professionals and provides trust to the stakeholders of a project. It demonstrates that the reuse professional masters one or all the steps that precede reuse (dismantling/deconstruction; reconditioning; storage – see diagram).

Source: SECO Belgium

An attestation that increases the reliability of the information delivered to the stakeholders in a project

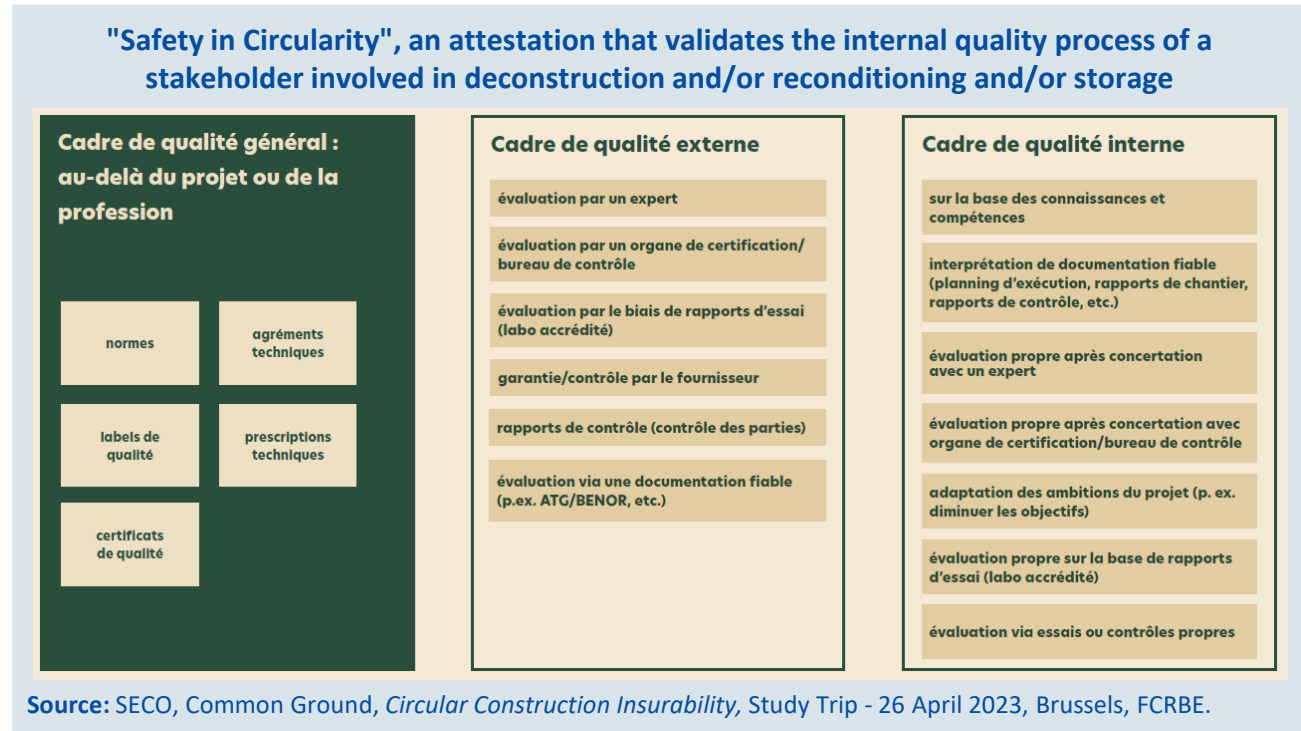
The attestation increases the reliability of the information that is transferred to the stakeholders involved in a project.

It allows them to know what can or cannot be done with a reclaimed product.

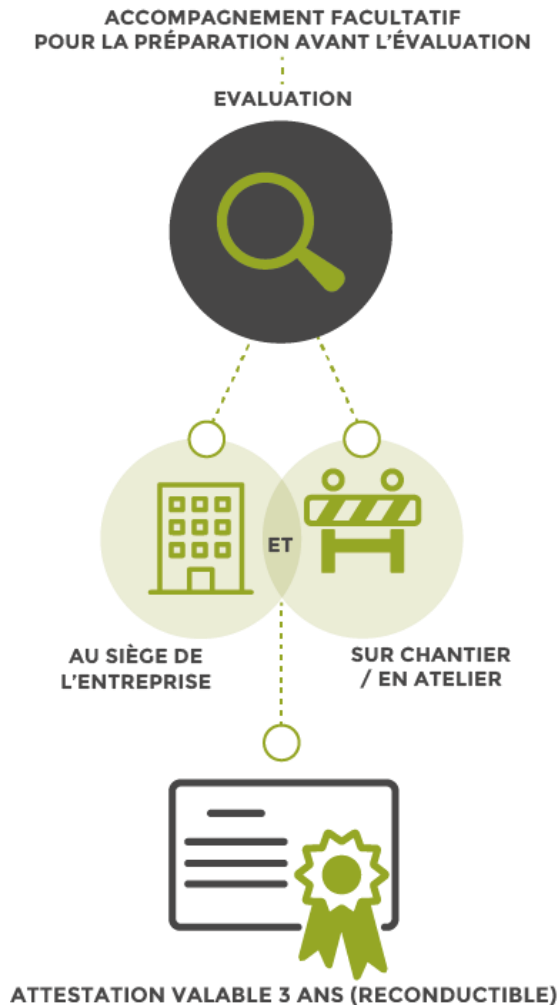
The origin of the product, the conditions related to its first use, the method of recovery, the conditions for disassembly, treatment and storage are precisely described.

The attestation ensures the traceability of information related to reclaimed materials and guides the prescribers in their choices and decisions.

It provides additional information that is needed and expected by the stakeholders in a project for integrating reclaimed materials.



Particulars for obtaining the attestation



Stakeholders concerned by the attestation: companies that are part of the construction products and materials reuse sector and that intervene during dismantling and/or reconditioning and/or storage.

Evaluation criteria: the evaluation of the independent auditor (third-party body) covers the organisational aspects of the company and the technical requirements linked to each material typology (to date, faucets, sanitary fittings, raised floors, protective railings).

Each material typology is subject to a technical reference standard based on technical documents and rules defining good practices.

The organisational and technical aspects are evaluated at the head office of the company and on the construction site or in a workshop by an independent auditor who is qualified by SECO Belgium.

Support: some companies are not mature enough from an organisational standpoint. Their approach lacks in rigour, is too informal and too often depends on the skills and experience of the manager alone. In this context, SECO can offer support so that they can progressively integrate the quality principles in their approach.

Content of the attestation

ATTESTATION
N° de l'attestation: MAT / 950 / CCCC / DDDD / EE

SECO Belgium atteste que l'entreprise
NOM ENTREPRISE
dont le siège est situé à:
ADRESSE
VILLE

se situe au sein des zones du référentiel SAFETY IN CIRCULARITY.

Processus opérationnels à mettre en œuvre pour accomplir l'attestation partie:

Processus	Compétences	Matériels	Personnel
Démontage			
Traitement			
Stockage			

La description complète du référentiel Safety in Circularity est reprise dans le tableau d'attribution N° 00000 du 01-01-2022.

Cette attestation, émise par SECO Belgium, a une date de validité du 00/00/0000 au 00/00/0000. Elle est soumise au régime d'attestation SAFETY IN CIRCULARITY.

Bruxelles, Click here to enter a date.

O. Debrunck
Directeur commercial et gestion

SECO Belgium SA - Carillonlaan 47 - 1000 Bruxelles

FICHE DE PRODUIT
Article N°:

Adresse: Rue n°
Code postal + ville
N° TVA: info@seco.be
Email: info@seco.be
Téléphone: +32 (0)20 36 00 00
Site web: www.seco.be

DESCRIPTION DU ROBINET

Identification robinet:

DOMAINE D'APPLICATION	Ex. robinetterie sanitaire
USAGE	Ex. robinetterie / cuisine
REFERENCE INTERNE (NUMERO DE LOT)	Numero d'article de fabrication ou numéro de lot des pièces et des accessoires de montage
COMPOSANTS DE REMBOULAGE	TYPES DE ROBINETS
	Couleur

Données produit:

FABRICANT	
NUMERO DE PRODUIT	
NUMERO D'ARTICULE	
PLAQUE TELEPHONE (mm)	
DIRECTIONS D'OPERATION (mm)	
DIRECTIONS DE MISE EN ŒUVRE	

Matériau:

MATRIAU DE BASE	
COMPOSANTS	
COLLAGES	
PIECES DE RECHANGE DISPONIBLES?	Non / Oui (*)
	Justification: (*) Supprimer les mentions inutiles

Rue n°
Code postal + Ville * N° TVA * T +32 (0)20 36 00 00 * info@seco.be * www.seco.be

BULLETIN D'ATTESTATION

Associé à l'attestation MAT / 950 / CCCC / DDDD / EE date: xx/xx/xxxx

FIRME:

ADRESSE:

DÉMONTAGE

Description courte du scope de cette étape, comme accomplie par l'entreprise.

TRAITEMENT

Description courte du scope de cette étape, comme accomplie par l'entreprise.

STOCKAGE

Pas d'application

SAFETY IN CIRCULARITY
ROBINETS

The attestation covers several processes linked to the reuse of materials:

- Dismantling/Deconstruction;
- Treatment/reconditioning;
- Storage of reclaimed materials.

The attestation is evolutive. A company that is attested for its deconstruction activity can increase its skills and extend its intervention fields to reconditioning, for example.

The attestation is proposed by SECO Belgium for four categories of materials:

- faucets
- sanitary fittings
- raised floors
- protective railings.

Materials with higher technical requirements (insulation, materials for structural use) are under development.

The attestation, delivered for three years, is a document that presents the material typologies and the steps for reuse that are attested. It also indicates that the company declares information that is reliable on the concerned materials.

The attestation is accompanied by an attestation bulletin and a material sheet. For each category, the bulletin includes each one of the steps of reuse mentioned on the attestation.

Conclusion on good practices related to insurance

At least two elements block stakeholders who are active in reuse:

- Very often, the materials stored by resellers come from multiple sources. This diversity and a lack of information on the prior conditions of use for these materials do not allow prescribers to recommend them with confidence for reuse.
- Companies who adopt a quality approach during recovery and preparing for reuse, do not succeed in standing out from their competitors.

The attestation helps remove these barriers. Its delivery provides a response to the expectations of the stakeholders in a construction/renovation project:

- It is delivered after an evaluation in the company and on the construction site/workshop by an independent and qualified auditor.
- It covers all of the steps in the reuse/reclamation process, from dismantling to supply while treating each step separately so as to involve the largest number of stakeholders involved in the reuse sector: deconstruction companies and companies specialised in reconditioning (as the latter are not necessarily involved in the dismantling).
- It covers the reuse/reclamation process, not the reused materials that are reintegrated. Indeed, these materials have all had different histories of use particularly related to previous exposure and solicitations.

These elements can reinforce the trust concerning reuse as they present an advantage so that:

- Prescribers recommend reuse,
- Installation companies purchase reused materials and are not subject to extra insurance premiums,
- Insurers validate the reuse of materials in the projects.

Author : Frédéric BOUGRAIN (CSTB)

Contributor : Victor MEESTERS (ROTOR)

Reviewers : Capucine GAUTIER et Elodie MACE (CSTB), Hugo TOPALOV (Bellastock)

Acknowledgment : Sye Nam HEIRBAUT and Carine HIERNAUX (SECO)

October 2023