

Cycling excursion

Bicycle policy of Leuven
10.10.2018





1. Cycle network - *layered approach*

- A. Cycle highways
- B. 'Doorfietsroutes'
- C. Local network

2. Bicycleparkings

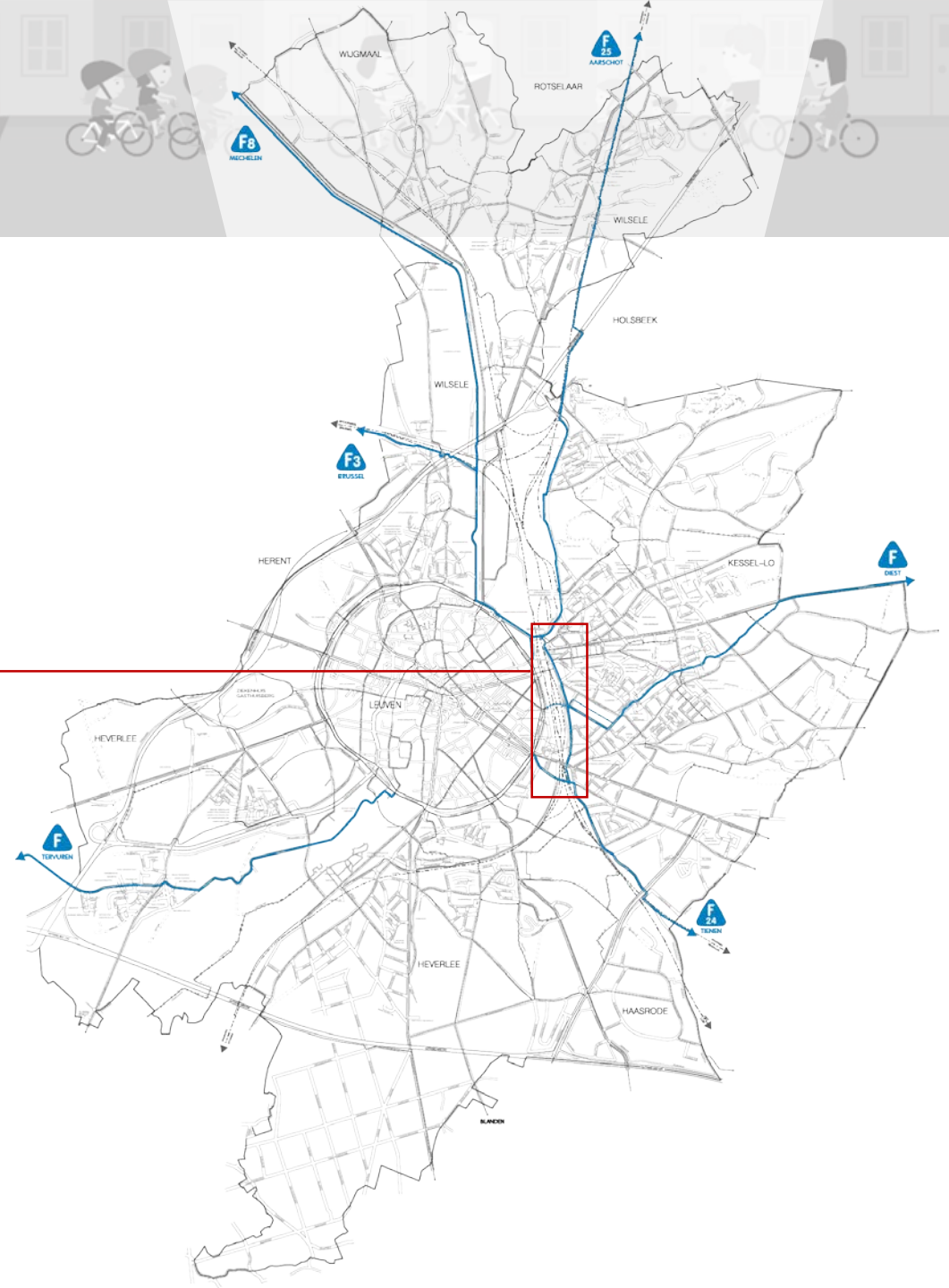


Cycle network

Cycle Highways

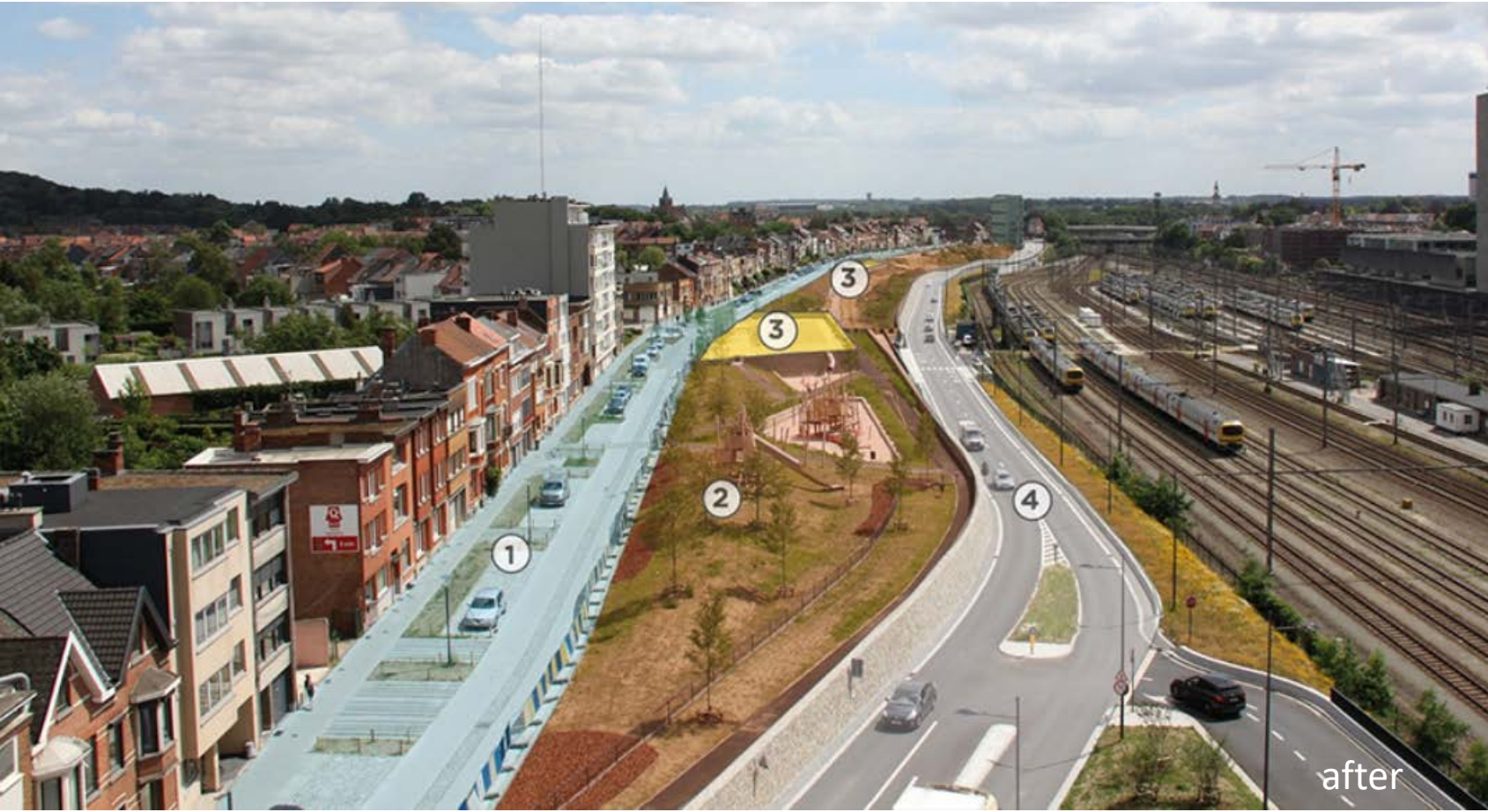
Martelarenlaan – ‘*cycle street*’

- > Link between F3 – F8 – F25 – F24 - Fdiest
- City development and bicycle infrastructure



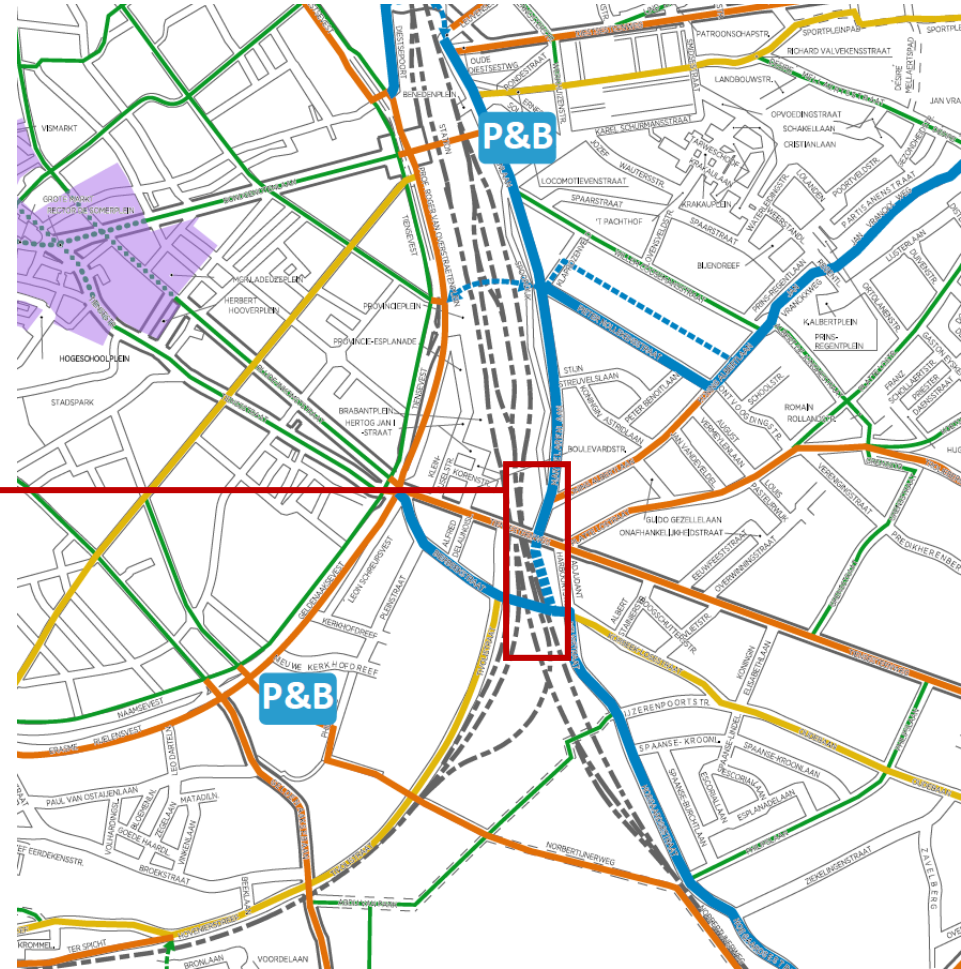


Cycle network





Cycle network





Cycle network

‘Doorfietsroutes’

Maria Theresiastraat – alternative route

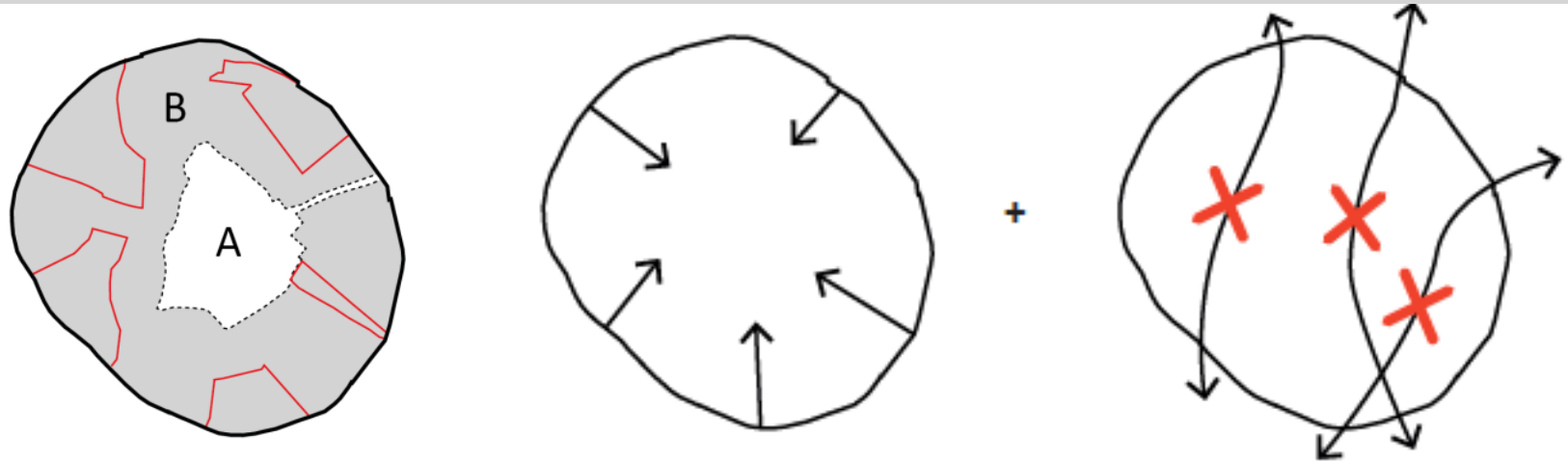
> Circulation plan made it possible to create more space for cyclists





Cycle network

'Doorfietsroutes'



2016 > introduction of circulation plan for city centre:

- Introduction of a low-traffic zone in the medieval center
- Ring road has to take more his role as a collector and distributor of traffic
- No shortcuts through the city center

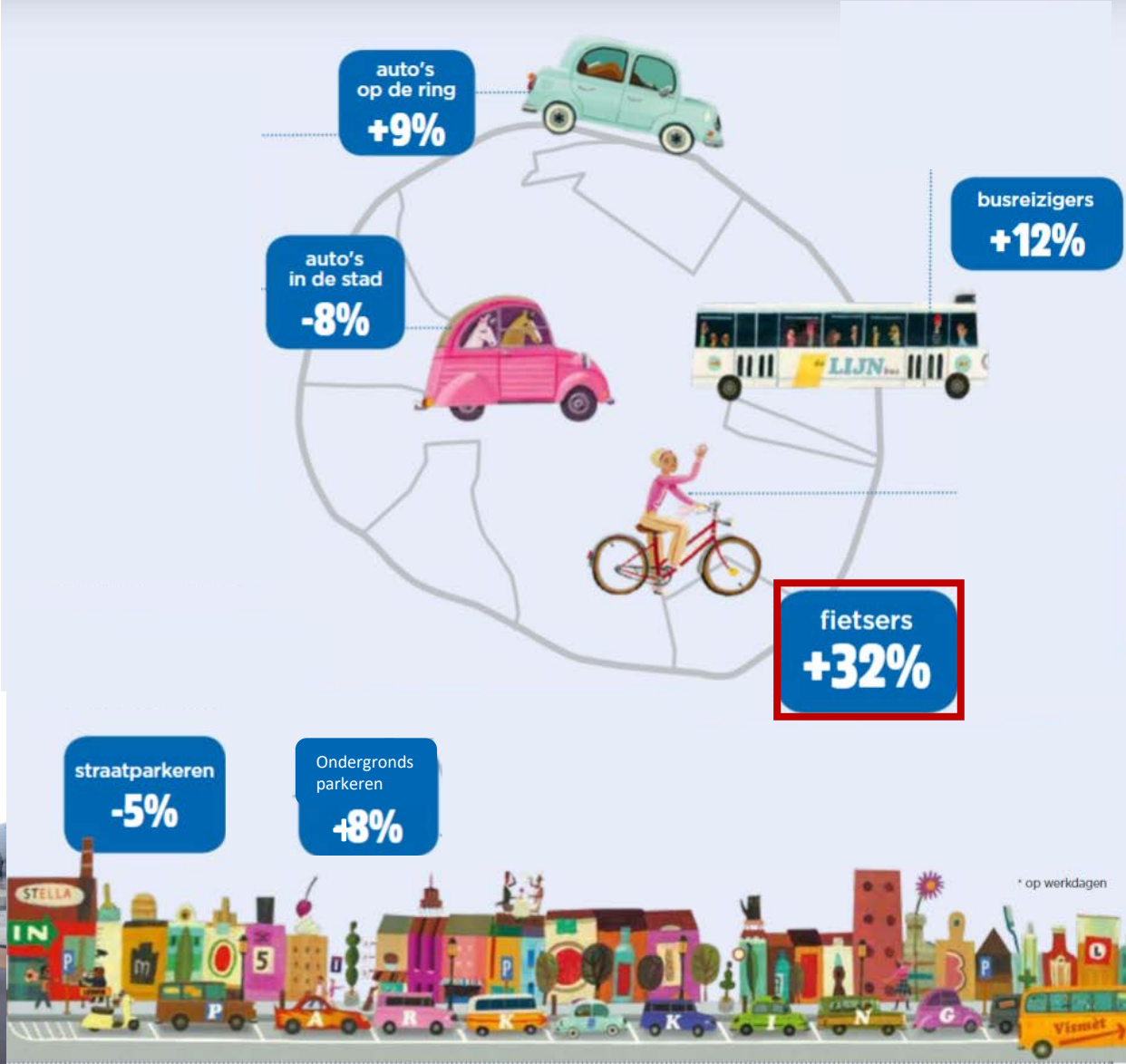


Cycle network

'Doorfietsroutes'

Circulation plan:

Evaluation after 1 year



* op werkdagen



Cycle network

‘Doorfietsroutes’

‘Cyclespiral’

> Connection between Kessel-Lo en Leuven





Cycle network

‘Doorfietsroutes’

Railway infrastructure

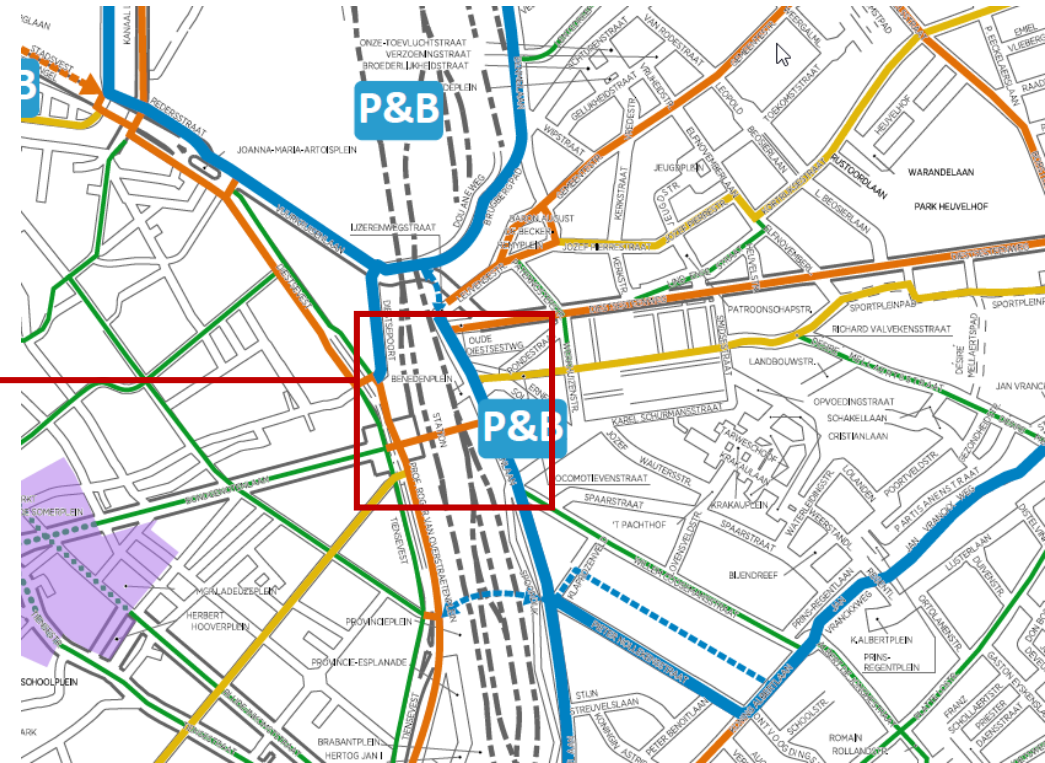
> No good connection between Kessel-Lo
and Leuven





Cycle network

'Doorfietsroutes'



Cycle network

'Doorfietsroutes'

Locomotievenpad

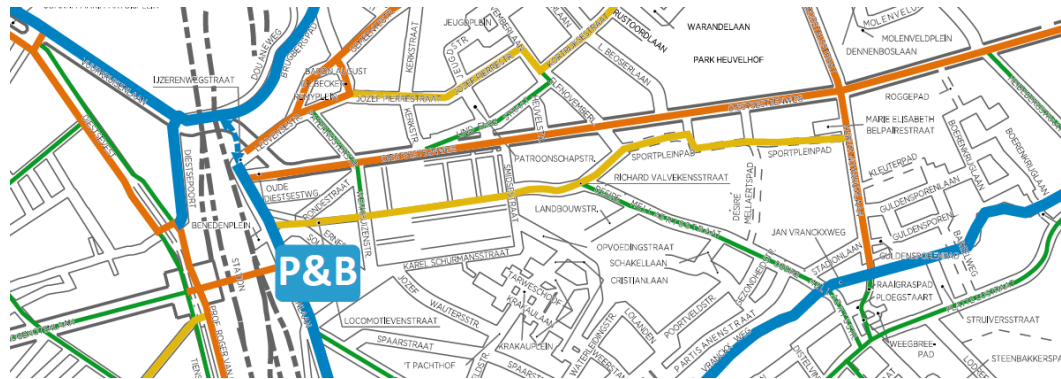
- > City development and bicycle infrastructure
- > Alternative for Diestsesteenweg – 'quiet road'





Cycle network

'Doorfietsroutes'





Bicycleparkings

Rector de Somer bicycleparking

- In the city centre
- Lockers, toilet, bicycle-repair, stroller rental service



Bicycleparkings

On-street parking

> Circulation plan: more space





Bicycleparkings

Fietscentrale

> Bicycle parking management

