



Working Conference  
**EMPOWERING NEIGHBOURHOODS  
FOR CLIMATE ACTION**

ARNHEM 10 & 11 APRIL 2019

# TRANSFORMING ENERGY SYSTEMS: REFLECTING ON THE ENERGISE PROJECT

Audley Genus

11 April 2019, Audley Genus



This project has received funding  
from the European Union's  
Horizon 2020 Research and  
Innovation programme under  
Grant Agreement No 727642.

**ENERGISE**  
EUROPEAN NETWORK FOR RESEARCH, GOOD PRACTICE  
AND INNOVATION FOR SUSTAINABLE ENERGY

GEMEENTE  
**Arnhem**

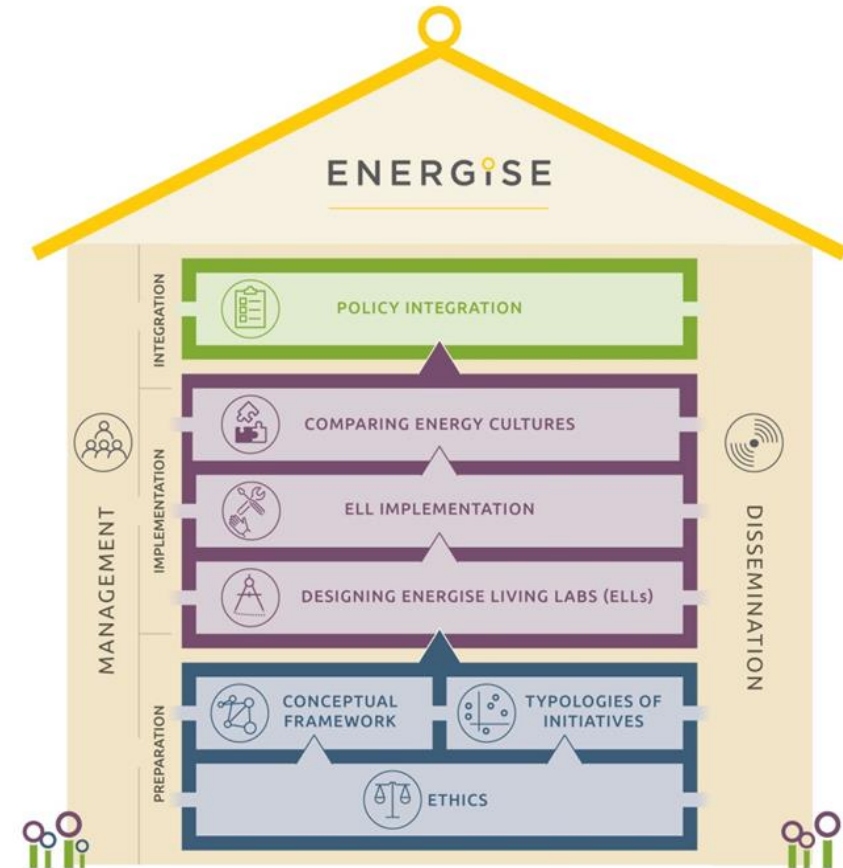


  
Climate Alliance

**Interreg**   
North-West Europe  
Climate Active  
Neighbourhoods  
European Regional Development Fund

# ENERGISE PROJECT - AIM/ OBJECTIVES

- **Overall aim: achieve greater scientific understanding of the social and cultural influences on energy use**
- **Develop an innovative framework to evaluate energy initiatives, taking into account existing social practices and cultures that affect energy use**
- **Advance the use of Living Lab approaches for researching and transforming energy-related practices.**
- **Encourage positive interaction between actors from society, the policy arena and industry.**
- **Effectively transfer project outputs towards the implementation of the European Energy Union.**



## Key questions involve:

- Learning from SECIs database (design and implementation of collective initiatives; policy context)
- Learning from ENERGISE living labs (ELLs)

Below draws on findings from ENERGISE WPs/ reflections of WP6 policy and decision-making forum (PDF)





# TYPOLOGY OF SELECTED SUSTAINABLE ENERGY CONSUMPTION INITIATIVES IN 30 EUROPEAN COUNTRIES .....

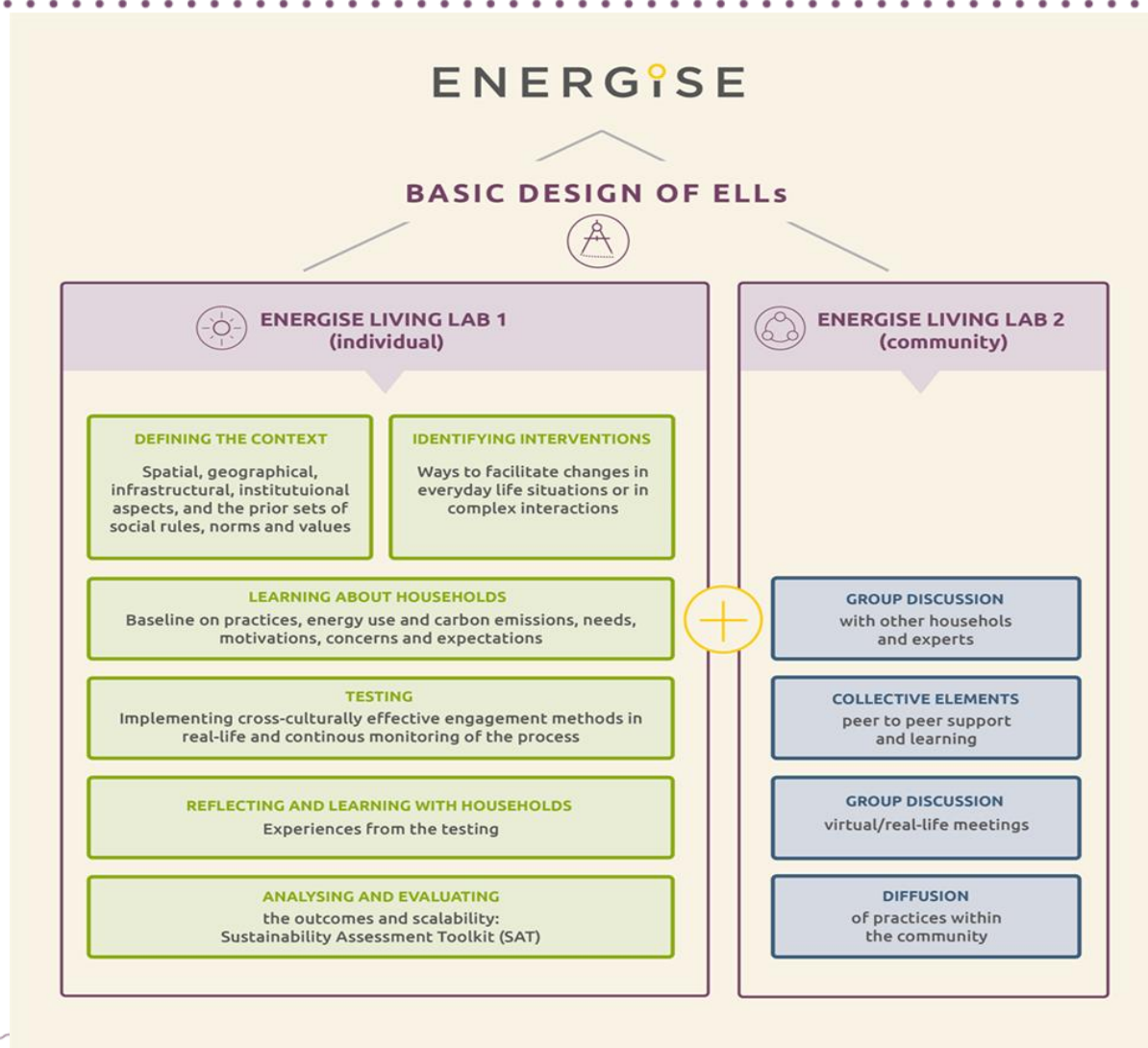
| Sustainable consumption category              | No. initiatives | % of total initiatives |
|---|-----------------|------------------------|
| Change as change in Complex Interactions      | 147             | 13.7                   |
| Change as changes in Everyday Life Situations | 124             | 11.7                   |
| Change as changes in Individual Behaviour     | 514             | 48.2                   |
| Change as changes in Technologies             | 282             | 26.4                   |
| <b>Total SECIs</b>                            | <b>1067</b>     | <b>100</b>             |



This project has received funding from the European Union's Horizon 2020 Research and Innovation programme under Grant Agreement No 727642.

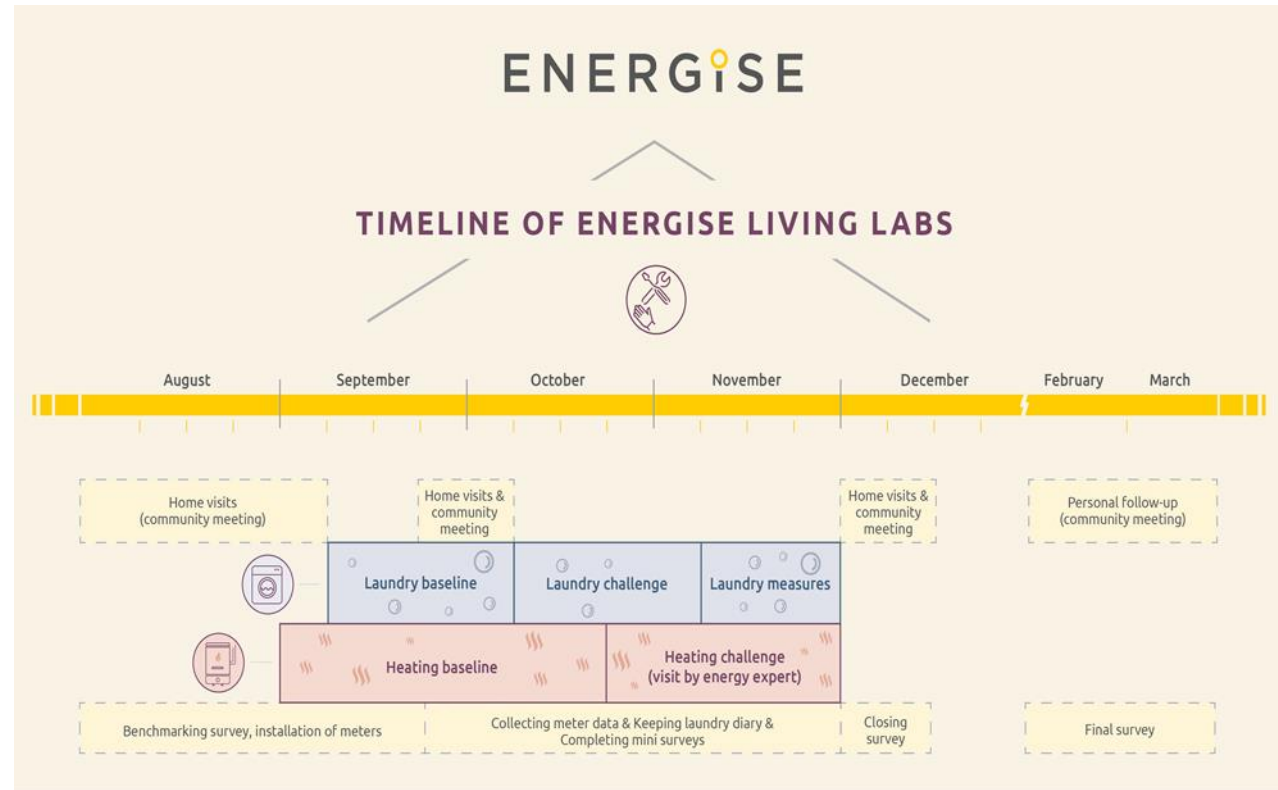
**ENERGISE**  
EUROPEAN NETWORK FOR RESEARCH, GOOD PRACTICE  
AND INNOVATION FOR SUSTAINABLE ENERGY





# ENERGISE LIVING LABS TIMELINE (2018-19)

6



This project has received funding from the European Union's Horizon 2020 Research and Innovation programme under Grant Agreement No 727642.

**ENERGISE**  
EUROPEAN NETWORK FOR RESEARCH, GOOD PRACTICE  
AND INNOVATION FOR SUSTAINABLE ENERGY

**Kingston University**  
London

# COMPARING TWO EU ENERGY POLICY IMAGINARIES

|                             | Alternative Imaginary: Practice focus                                     | Dominant Imaginary: Technological and Behavioural Change                               |
|-----------------------------|---|--|
| <b>Framing risks</b>        | Technological failure; need to understand energy-related practices        | Technical challenges; need for social acceptability                                    |
| <b>Policy focus</b>         | Changes in energy practices; participatory governance                     | Energy efficiency; increase uptake of renewable energy technologies                    |
| <b>Controversies</b>        | Competing understandings of (how to change) energy-related practices      | Ensuring behaviour change; consumer choice   |
| <b>Stakes</b>               | Realising the energy transition through responsible governance            | Competitiveness; buy-in of customers   |
| <b>Closures</b>             | EU and national policies and initiatives predicated on changing practices | Technical energy efficiency innovations; policy measures to 'nudge' individual choices |
| <b>Civic epistemologies</b> | Understanding energy practices through co-creation of knowledge           | Enabling consumers to make 'better' energy choices                                     |



This project has received funding from the European Union's Horizon 2020 Research and Innovation programme under Grant Agreement No 727642.

**ENERGISE**  
EUROPEAN NETWORK FOR RESEARCH, GOOD PRACTICE  
AND INNOVATION FOR SUSTAINABLE ENERGY

Kingston  
University  
London

# LEARNING FROM SECIS?

---

## Designing local initiatives and policy impact

- Importance of peer-to-peer and cross-initiative learning; evaluation
- Demands on time/resources/expertise (e.g. engagement methods)
- Require more local support/new roles for researchers/others?
- How to achieve post-project longevity and extra-project impact and learning given funding/time constraints
- Pan-EU: scope for sufficiency, complex interactions & practice-relevant SECIs. NB 'common' measures will work differently according to national/local context; 'genuine engagement' challenge



# LEARNING FROM ENERGISE LIVING LABS

---

9

- Who to involve? (HHs; local, experienced partners w. contextual knowledge; trusted agencies)
- How: participant recruitment and engagement (importance of gatekeeper(s); range of approaches/ channels needed; resource-intensive; co-creation more with local partners than HHs directly)
- Participant number and composition (too small for statistical significance; large enough for diversity; small enough for interaction on ELL2; variable distribution of socio-economic categories)



This project has received funding from the European Union's Horizon 2020 Research and Innovation programme under Grant Agreement No 727642.

**ENERGISE**  
EUROPEAN NETWORK FOR RESEARCH, GOOD PRACTICE  
AND INNOVATION FOR SUSTAINABLE ENERGY

**Kingston  
University**  
London

- Living Labs potential spaces for creative experimentation; local/practice focus transcends behaviour/consumer approach; address what is meaningful to users & potential for fundamental, enduring transformation
- Potential ‘viral effect’ of changing practices (c.f. scale); amplification by diverse actors
- ENERGISE/SSH contribution: change worldview regarding ‘levers’ of change; not merely concerned with instrumental design of initiatives. Co-creation or ‘co-inquiry’?

# ENERGISE

EUROPEAN NETWORK FOR RESEARCH, GOOD PRACTICE  
AND INNOVATION FOR SUSTAINABLE ENERGY 



## THANK YOU FOR YOUR ATTENTION

KINGSTON UNIVERSITY LONDON

**Tel.:** +44-208-417-5665 **Email:** [a.genus@kingston.ac.uk](mailto:a.genus@kingston.ac.uk)



This project has received funding from the European Union's Horizon 2020 Research and Innovation programme under Grant Agreement No 727642.