



Working Conference

EMPOWERING NEIGHBOURHOODS FOR CLIMATE ACTION

ARNHEM 10 & 11 APRIL 2019



A Look into Climate Active Neighbourhoods

Svenja Enke & Anne Joffre
Climate Alliance & Brest Métropole

11 April 2019



Who is CAN?



Project partners from 5 NWE countries

- LP: Climate Alliance, city network
- Local authorities
- Social housing provider
- Local and regional energy agencies
- Regional refurbishment association working with residents
- Community group

• Associated partners:
Climate Alliance Luxemburg,
University College Dublin,
Ireland

Project duration: Feb 16 – Apr 2020

Total budget: EUR 7.88 mio

EU funding: EUR 4.73 mio

Why CAN?

Residential buildings have a huge potential for energy-savings and CO₂ reduction

Energy renovation rate is too low to meet EU targets to reduce GHG emissions by 2030 and 2050



Why CAN?



Local authorities face similar major difficulties in implementing low carbon strategies in the residential sector

→ New methods are needed to reach stakeholders and encourage them to act.



What is CAN?



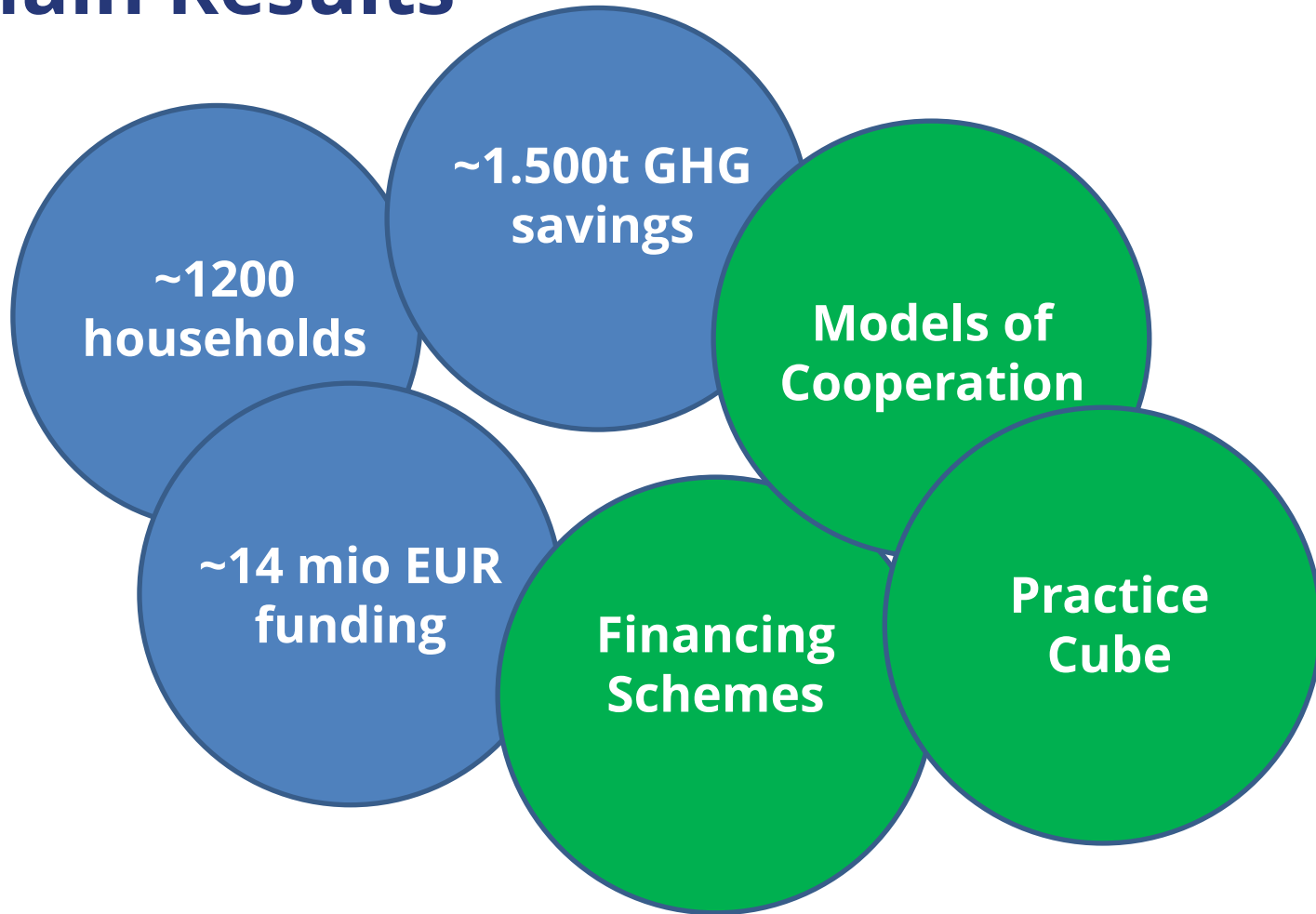
Implementation of new models for sharing responsibilities between local authorities and neighbourhoods

- Go beyond current practice
- Trigger and support bottom-up actions
- Greater emphasis on the needs of residents

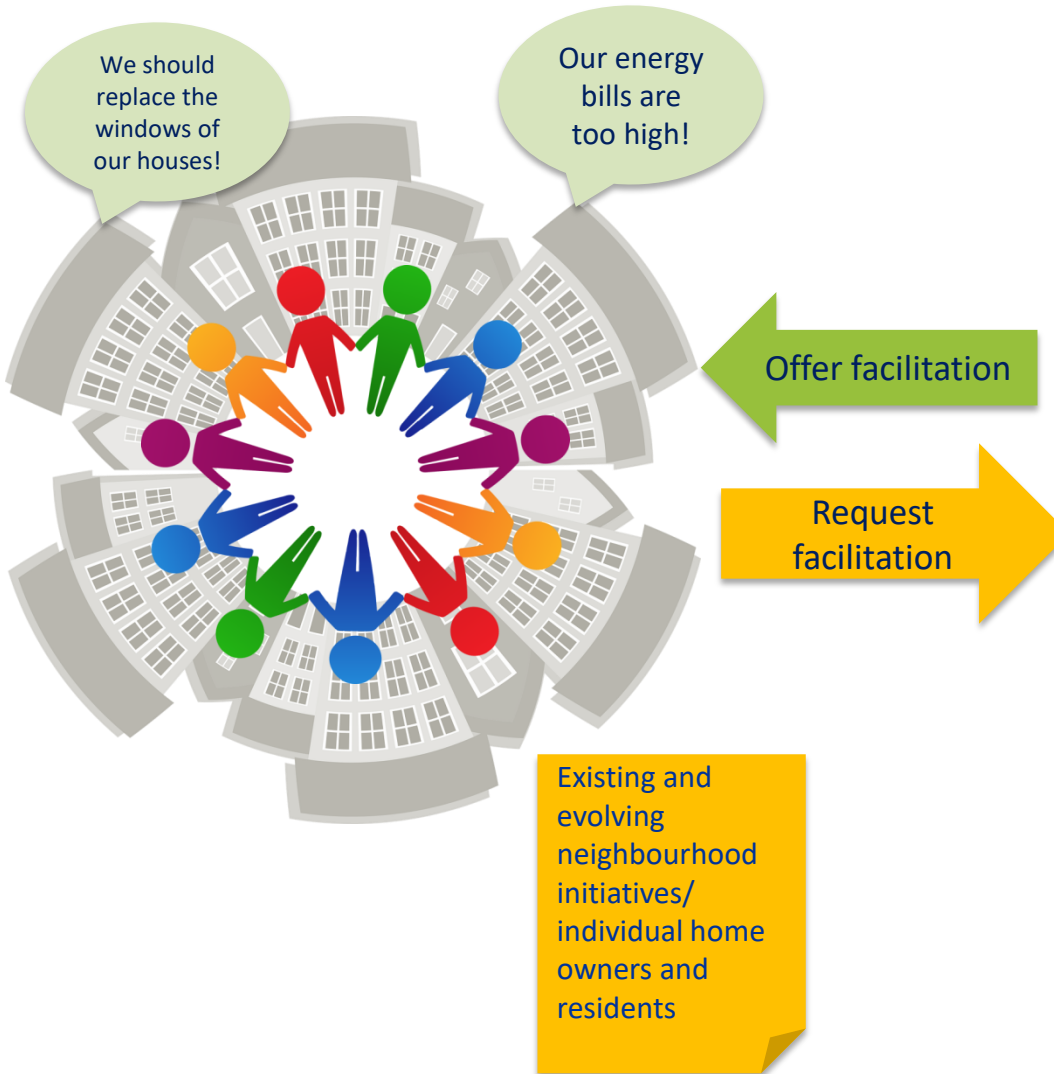
Target: urban districts in NWE with high potential to reduce GHG emissions. Priority is given to deprived neighbourhoods.



Main Results

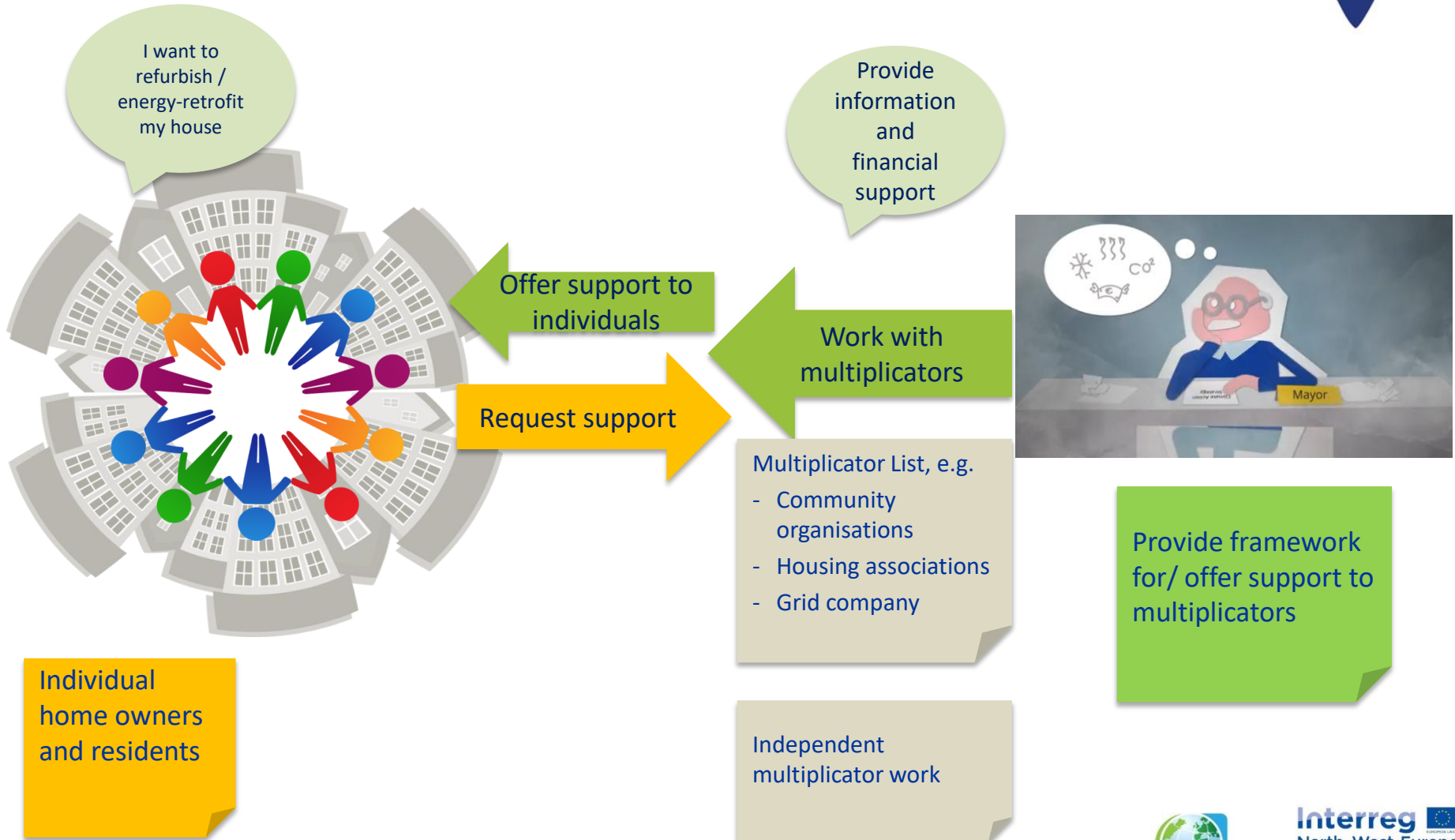


The Grassroots Approach

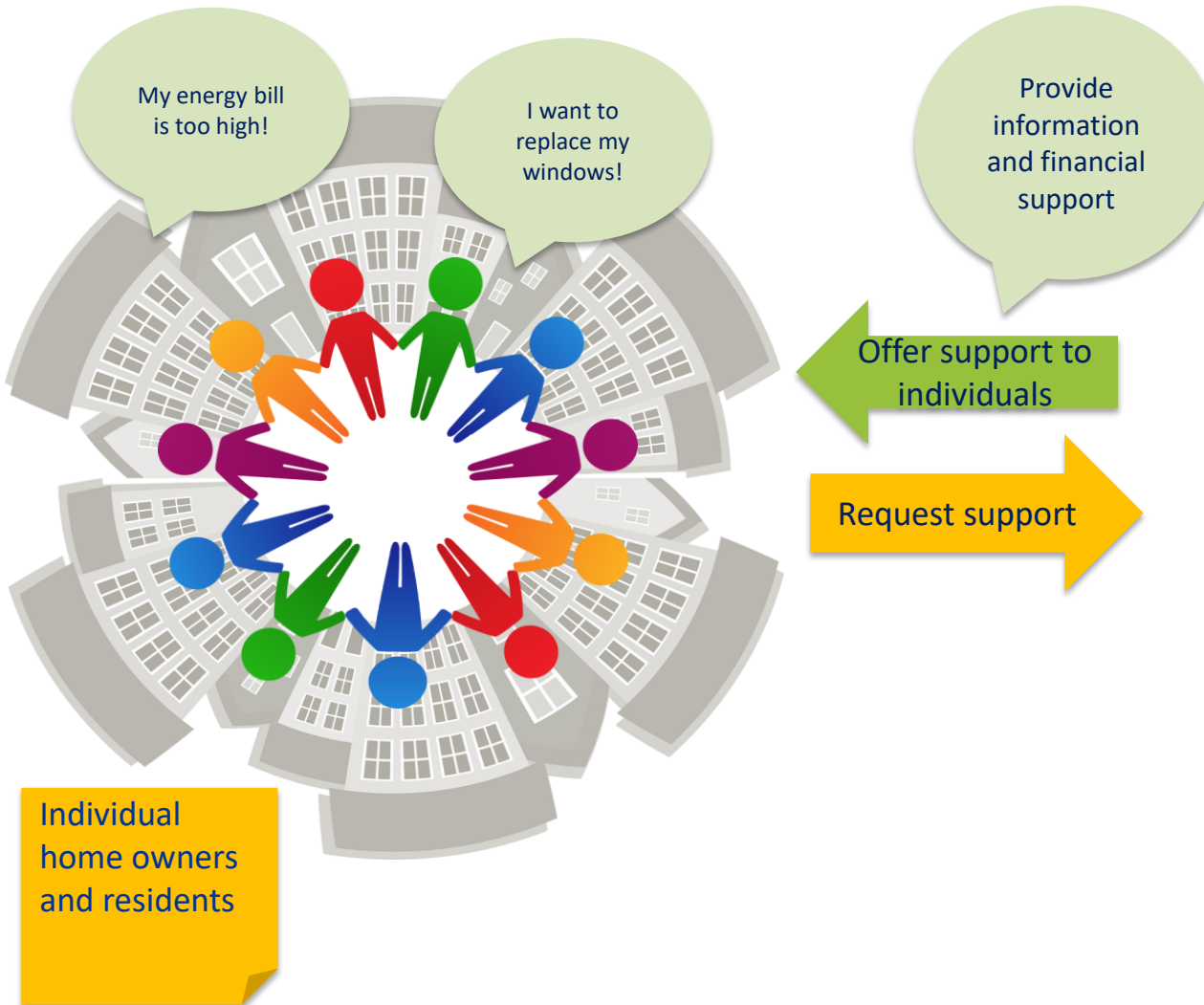


- To-Do List
- Support meetings, e.g. provide rooms
 - Finance requested expert support, e.g. energy action plan
 - Provide requested information

The Multiplier Approach



The Face-to-Face Approach



- Municipal and adjoint departments, e.g.
- Energy advisors
 - Social workers
 - City quarter office



Bellevue Neighbourhood, Brest



11 April 2019



Bricobus



11 April 2019



Public Event „Toît par toi“



11 April 2019



Public Event „Toît par toi“



11 April 2019



Public Event „Café Energie“



11 April 2019



„I was so glad of my small gifts (*energy saving equipment*) that I stayed awaked until after midnight, just for the pleasure of installing my new lamps, isolating my door with different tapes [...] I don't want to be sentimental, but since the „solidarity machine“ has turned on last year, the light has started to reappear.

[...]The efficiency of this networking between different stakeholders has allowed me to spend the winter in the warmth“



Working Conference

**EMPOWERING NEIGHBOURHOODS
FOR CLIMATE ACTION**

ARNHEM 10 & 11 APRIL 2019



Thank you
for your attention!

11 April 2019

