

# Pollywood Ltd

Richard Brough - Developments Manager



# Pollywood Is...

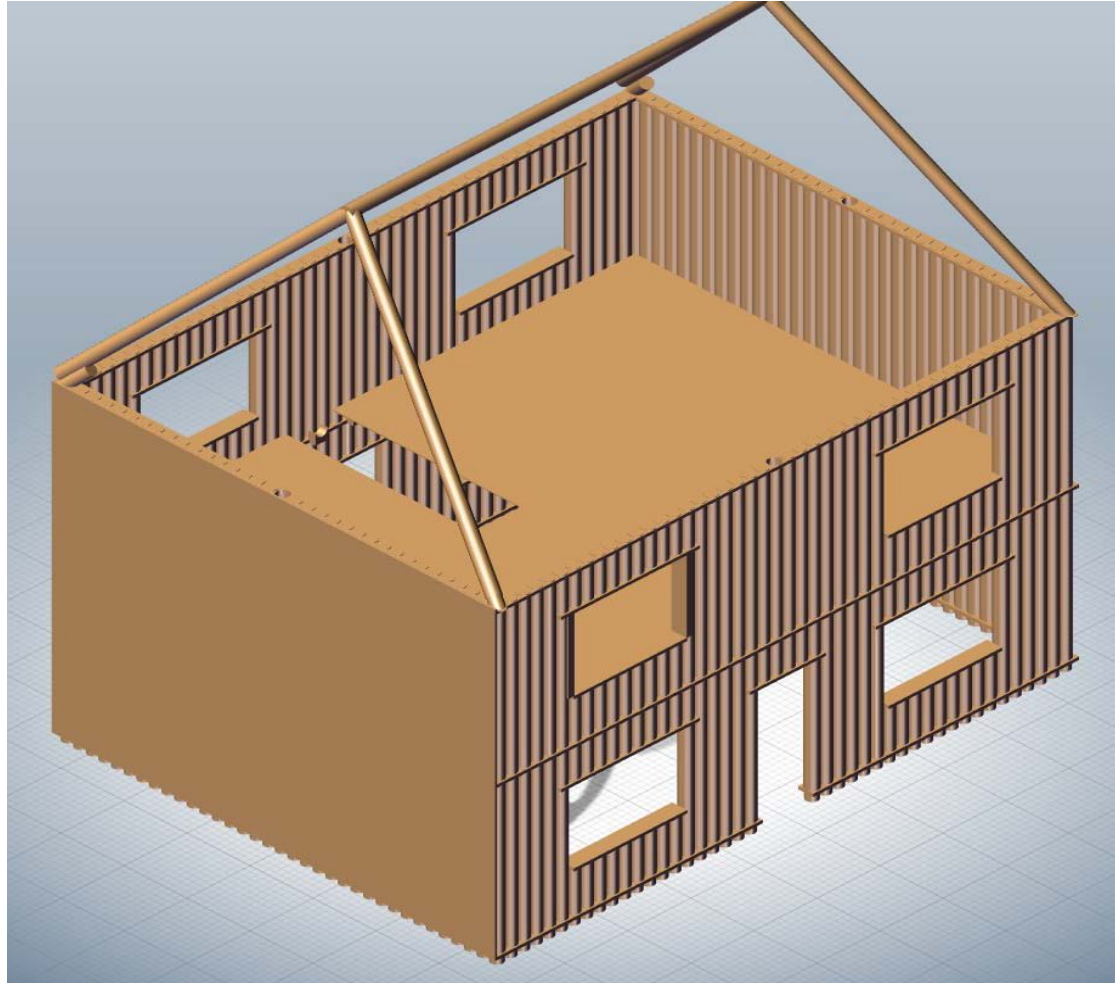
- An engineered structural wooden tube
- Sustainably manufactured
- Continuous Manufacturing Process
- Very high strength to weight ratio
- Eco friendly manufacturing process



# The Pollywood Product Catalogue

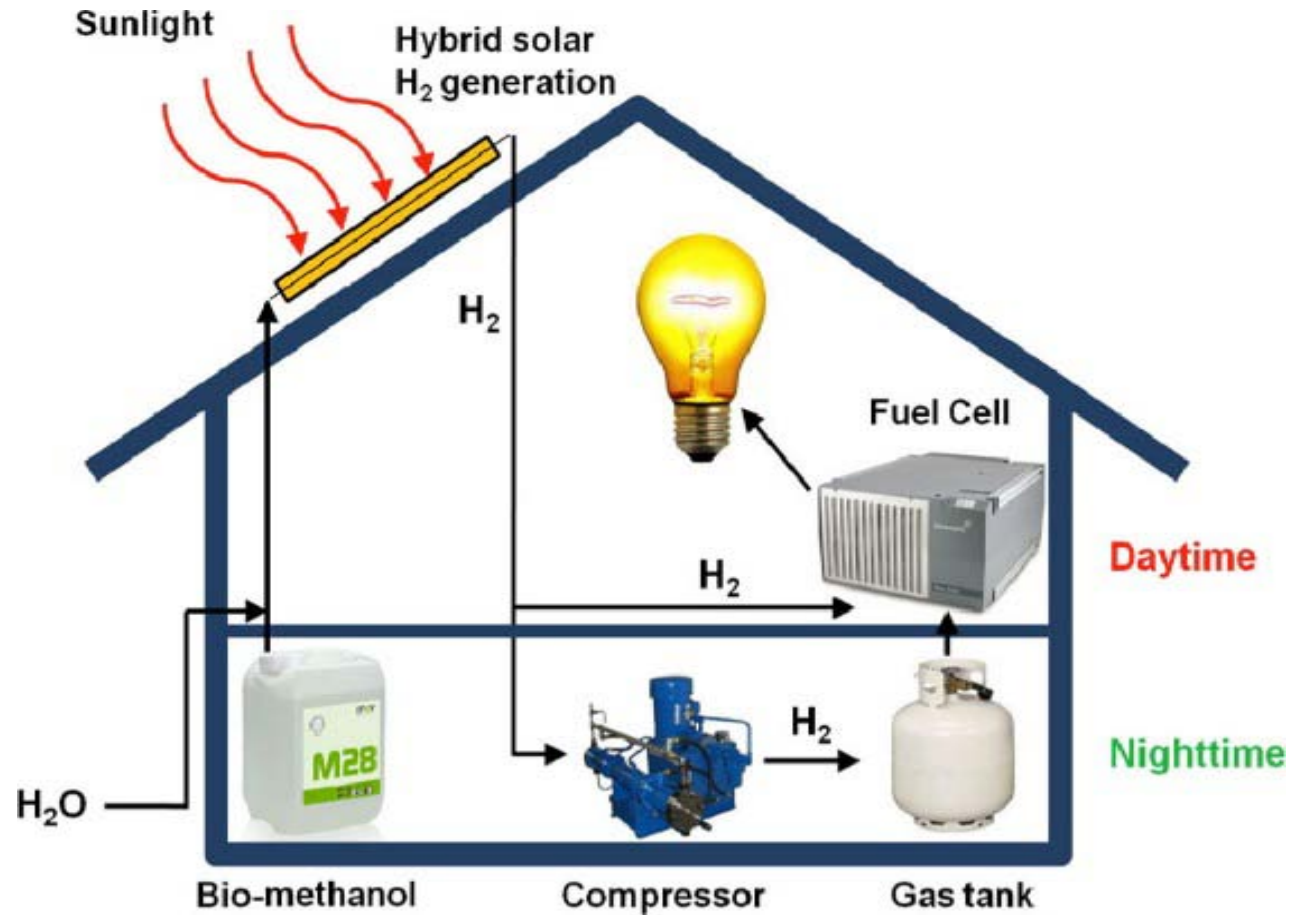
- Current investment from Northern Powergrid to replace telegraph poles.
- We can produce 'soft' tubes or 'structural' tubes.
- Potential for 180+ Products covering 13 sectors of the economy.
- One product being and Eco-Home Echome!





# Pollywood Echome

# Echome and Hydrogen



# Echome Provides

- 🌱 Complete flexibility in design to accommodate hydrogen installation.
- 🌱 Hydrogen mains supply, fuel storage and fuel cell integration with solar power.
- 🌱 Hydrogen storage cylinders within the tubular walls.
- 🌱 Dr. Bob - Demand Response in Blocks of Buildings.
- 🌱 A realistic and feasible exchange of housing construction practices, enabling a transfer of processes, skills and trades to new ones, whilst helping creating new industries.



# Echome Environmental Savings

- ▶ An example of overall costs and savings of raw material shipping by sea from port to port covering fuel, shipping cost, and environmental damage savings by using Pollywood timber

Product x 100,000	Total Weight (Metric)	Shipping Costs	CO2 Emissions (Tonnes)	NOX Emissions (Tonnes)	Fuel Used (Gallons)
9m Utility Pole @ 400kg Each	40,000 tonnes	£2,851,945	1,728	98.73	150,492
Pollywood Pole 8" Diameter Equivalent	3,354 tonnes	£247,535	145	8.28	12,620

# Pollywood Ltd

## Engineered Wood Tubes

"Thirty spokes share the wheel's hub; it is the centre hole that makes it useful.  
Shape clay into a vessel; it is the space within that makes it useful.  
Cut doors and windows for a room; it is the holes which make it useful.  
Therefore benefit comes from what is there; usefulness comes from what is  
not."

— Excerpt from the Tao Te Ching