

## BioBase4SME is a strong network of leading bio-economy experts

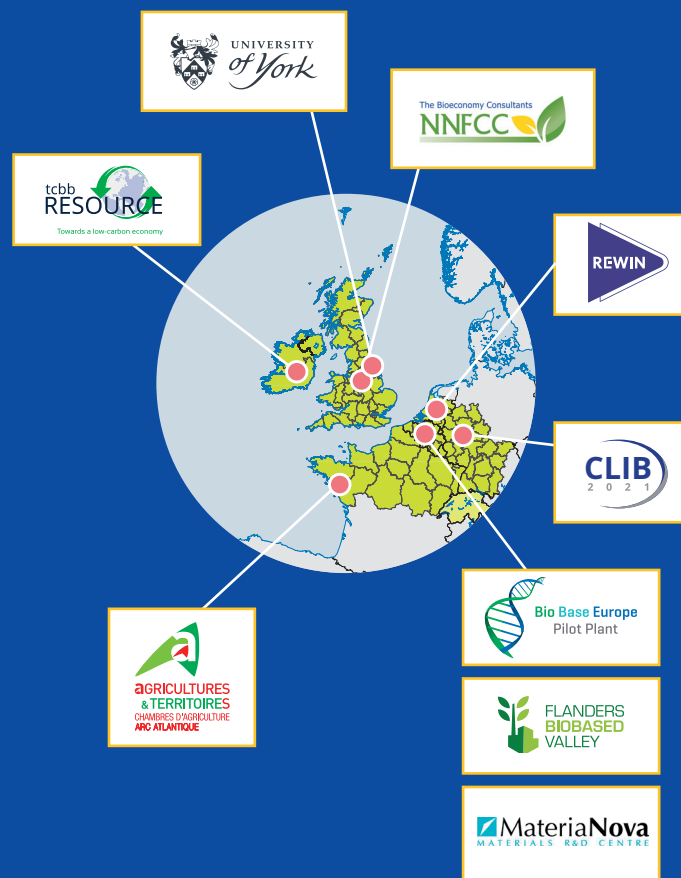
The project offers innovation support services to North-West European SMEs and start-ups active in the bio-economy.

The project supports SMEs on their way to getting industrial proof of concept and a realistic business plan in place. Both are essential to convince any type of investor or client.

### BioBase4SME Project Objectives

Already reached by Nov 2017	Target for 2019
<b>Workshops &amp; Trainings</b>	
<b>16</b>	<b>26</b>
<b>Biocamps</b>	
<b>1</b>	<b>2</b>
<b>Innovation Coupons Granted</b>	
<b>29</b>	<b>54</b>
<b>Allocated Grants</b>	
<b>0,6M €</b>	<b>1,8M €</b>

## Project area and project partners



# Interreg North-West Europe BioBase4SME

European Regional Development Fund

training  
innovation biocamps  
scale-up to pilot scale de-risking  
Life Cycle Assessment  
proof-of-concept  
**BIO-INNOVATION**  
support for SMEs  
techno-economic evaluation  
market research  
feedstock analysis  
networking business planning  
social acceptance  
*business plan support*

**INNOVATION  
COUPONS  
available  
up to  
€ 100.000**

Supported by:

**FLANDERS  
INNOVATION &  
ENTREPRENEURSHIP**



**Flanders  
State of the Art**

## Bio-Innovation Support for Entrepreneurs throughout North-West Europe

March 2016 – February 2019

BioBase4SME is co-funded 60% by the Interreg North-West Europe Programme. Interreg NWE fosters transnational cooperation to make Northwest Europe a key economic player and an attractive place to work and live, with high levels of innovation, sustainability and cohesion.

### BioBase4SME is co-financed by



[www.nweurope.eu/BioBase4SME](http://www.nweurope.eu/BioBase4SME)  
@BioBase4SME

## BioBase4SME offers FULLY FUNDED Workshops/Trainings and Innovation Biocamps



### One-day workshops and training on specific topics:

Social Acceptance • Communicating Sustainability • Life Cycle Assessment • The Collaboration Plan(t) • Intellectual Property Strategy • Natural Fibertastic • Technology Transfer in Bioeconomy • New Solutions for Biobased Painting • and many, many more...

Testimonial

Dr. Frank Kensy, Smart Bioprocess, Germany:

*"I believe LCA is a great tool which should be applied throughout the whole bioprocess development phases. The BioBase4SME seminar on LCA gave me a good overview on industrial practice and theoretical background."*

### One-week Innovation Biocamps:

#### Facts Biocamp 2017:

- 17 enthusiastic biobased start-ups and SMEs
- 20 innovation experts
- an amazing venue
- one entire week to learn, get inspired, network
- immerse the participants in skills and tools for successful innovation
- and so much more...

**Apply for our Biocamp: 3-8 June 2018, York, UK**

Testimonial

François Geeraerts, BioPLA, Belgium:

*"The Biocamp was extremely useful and instructive. We are now able to further develop our business in a more structured and deliberate way. Many useful contacts came out of the Biocamp such as a continued personal mentorship by one of the experts and support from a VC."*

## BioBase4SME runs an Innovation Coupon Scheme

**Coupon value**  
up to €100.000

**50-100% funded**  
depending on the service

**Fast and SME  
friendly application  
procedure**

**Monthly evaluation  
of applications until  
November 2018**

Apply for coupons for the following services, or a combination thereof:

### Non-technical services:

- Life cycle assessment (materia nova, Belgium)
- Market research, value chain assessment, business plan coaching (NNFCC, United Kingdom)
- Mentoring on social acceptance (AC3A, France)

Testimonial

Dr Ed Marshall, CTO Plaxica, United Kingdom:

*"Plaxica is delighted with the quality of work produced on a BioBase4SME-funded market research study. The report is comprehensive, relevant and very useful in helping Plaxica identify the products and companies to target in short and medium terms."*

### Technical services:

- Process development and scale-up in a pilot plant (Bio Base Europe Pilot Plant, Belgium)
- Pre-pilot equipment for pyrolysis and anaerobic digestion (tcbb RESOURCE, Ireland)
- Application testing for fibers (paper/composites), bioplastics, lignine, colorants and biobased solutions (e.g. herbicides, degradable bioplastics) (facilitated by REWIN, the Netherlands)

Testimonial

Dr Florence Gschwend, Chrysalix Technologies, United Kingdom:

*"The BioBase4SME voucher has enabled us (an early-stage start-up) to get more value out of the external funding we have received while connecting us to a highly skilled organisation for our scale-up work."*

## Get in touch with your regional Bio-Innovation Agent

**Flanders:** Sofie Dobbelaere @ Flanders Biobased Valley  
sofie.dobbelaere@fbbv.be, +32 (0)9 264 59 05

**Services** Networking, trainings, workshops

**France:** Pascal Dagron @ AC3A  
contact@ac3a.chambagri.fr, +33 (0)253 466 257

**Services** Social acceptance, trainings, workshops

**Germany:** Dennis Herzberg @ CLIB2021  
herzberg@clib2021.de, +49 (0)211 67931 46

**Services** Networking, trainings, workshops

**Ireland:** Pádraic Ó hUiginn @ tcbb RESOURCE  
padraic.ohuiginn@nuigalway.ie, +353 (0) 87 905 3806

**Services** Pre-pilot equipment for anaerobic digestion and pyrolysis, trainings, workshops

**The Netherlands:** Roel Koevoets @ REWIN  
r.koevoets@rewin.nl, +31 (0)6 226 639 34

**Services** Application testing, trainings, workshops, networking

**United Kingdom:** Lucy Montgomery @ NNFCC  
l.montgomery@nnfcc.co.uk, +44 (0)1904 435291

**Services** Market research, feedstock analysis, business plan

**Wallonia:** Olivier Talon @ Materia Nova  
olivier.talon@materianova.be, +32(0)65 55 49 18

**Services** Life-Cycle assessment, trainings, workshops

#### Biocamp contact:

Margaret Smallwood @ University of York  
margaret.smallwood@york.ac.uk, +44 (0)7984637798

**Services** Organise Biocamp 2017 and 2018

#### Project Coordinator: Bio Base Europe Pilot Plant

- Project Coordinator: Tanja Meyer  
Tanja.Meyer@bbeu.org, +32 (0)492 25 55 37
- Communication Manager: Katrien Molders  
katrien.molders@bbeu.org, +32 (0)486 951 109

**Services** Process development and scale-up incl. techno-economic evaluation, networking