

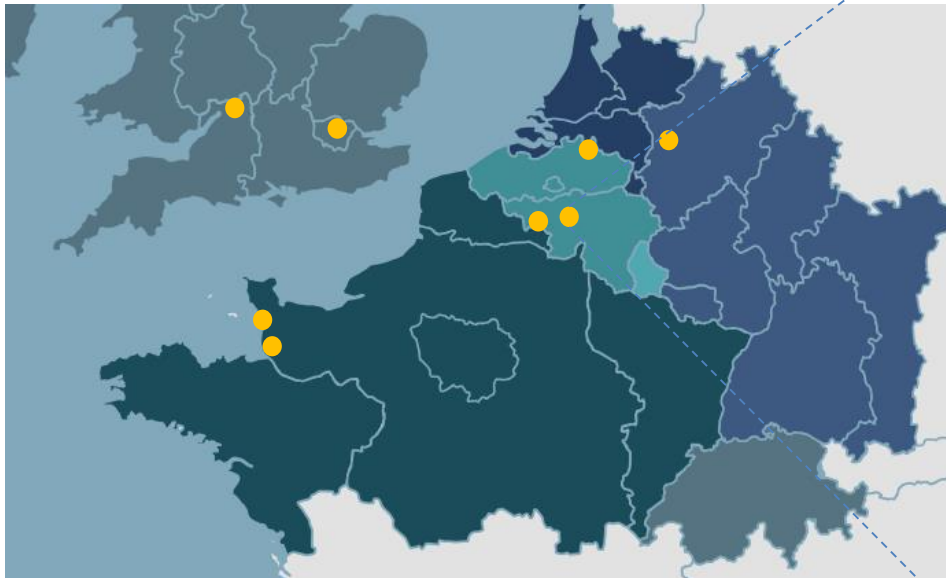


# The landfill of Onoz and the Green Deal in Wallonia

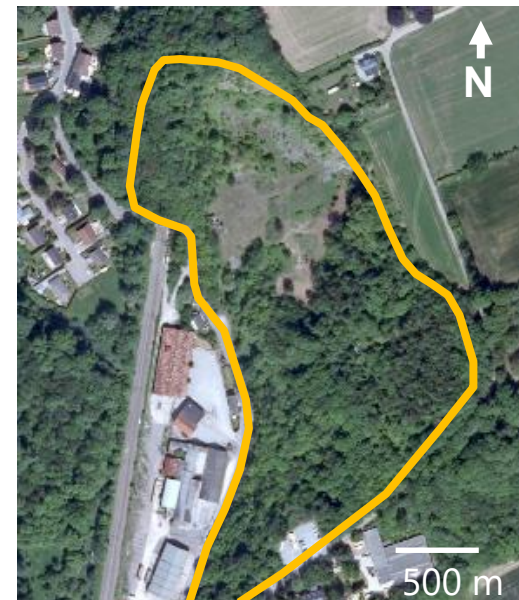
**Dr. Laura Lamair**

*RAWFILL project Assistant  
R&D and Innovation Department  
SPAQuE*

# Presentation of the Onoz landfill



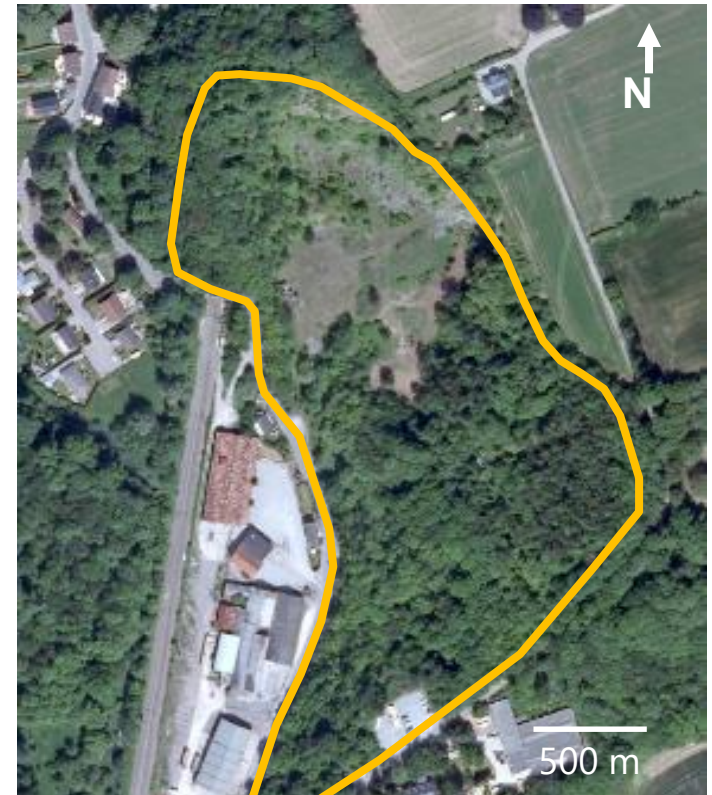
## The Onoz landfill



# Presentation of the Onoz landfill

## Onoz (BE) – Landfill ID

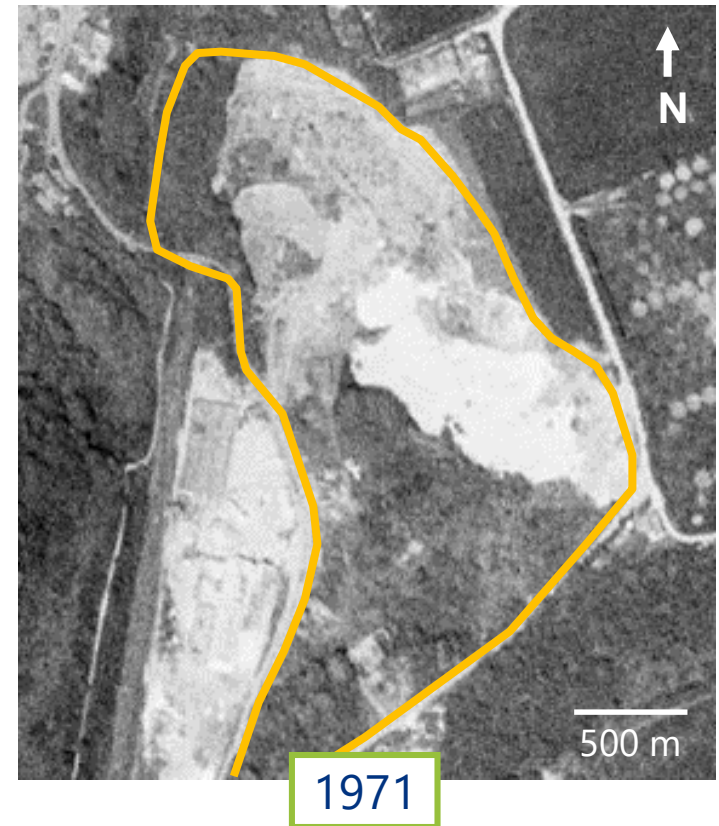
- Site area: 5.8 Ha
- Landfill morphology: old quarry
- Type of waste: industrial waste
- Status: illegal
- Natura 2000 area (Eagle owls, badgers, calcareous grassland)
- Ground water reservoir protection area



# Presentation of the Onoz landfill

## History of the site

- **1902-1967:** Quarry (limestone extraction)
- **1967-1976:** Lime and fly ash deposits
- **1982-1987:** Heterogenous waste deposits (tyres, inert, plastics, etc.)





# Landfill mining in Wallonia

~~Start law project~~

No legislation in Wallonia regarding landfill mining

Green Deal



EUROPEAN UNION



Wallonie

## Green Deal

- Walloon Green Deal  $\neq$  Green Deal European
- The Green Deal was originally developed in the Netherlands in 2011.
- The concept was exported in different countries.
- The Green Deal is a voluntary agreement between (private) partners and a Government to start a green project together.
- The Green Deal is an obligation of best efforts, not an obligation of result, unless the parties wish otherwise.



- All parties are committed to doing what is within their capabilities to realize the project.
- Environmental goals are pursued that go hand in hand with increased competitiveness and good business operations.
- A conscious use is made of the dynamics, creativity and knowledge that are present in society to meet these social (environmental) challenges. Both companies and organizations and the government can make proposals.

- The covenant must clear the way, provides an acceleration or serves as leverage for other (similar) initiatives.
- The lead time is ideally not longer than three to four years.
- The agreement contains a clear division of roles, a description of the expected results, the associated actions and the time schedule.



## What opportunities does a Green Deal offer?

### For the partners :

- The partners are given a clear point of contact with the government, which can act as a facilitator or mediator in relation to the various policy areas.
- The Green Deal leads to less common partnerships with other partners.
- The Green Deal speeds up a number of initiatives.
- If a bottleneck within the regular framework cannot be resolved, it can be investigated whether a breakthrough can be made through experiment legislation or regulatory areas.

## What opportunities does a Green Deal offer?

### For the government :

- This participatory approach brings the government closer to companies, organizations and civil society and makes it easier for them to notice needs.
- The Green Deal makes the effort of both society and policy visible.
- The Green Deal promotes the transversal functioning of the government.
- The Green Deal offers the opportunity to profile itself.

## The first Green deal in Wallonia to start a landfill mining project

- Signature of the first Green deal with Walloon Region
- Partners: Walloon Region, SPAQuE, Nonet Company and Jemeppe-sur-Sambre municipality
- Creation of a working group
- Onoz would be the first landfill mining project in Wallonia
- Clear the way for other landfill mining initiatives in Wallonia

## Green deal for the landfill mining of Onoz

### Walloon Region's Engagement

- Identify the potential adjustments in the legislation to reuse materials recovered from the landfill
- Follow the landfill mining projects from a legislative point of view and provide, if needed, legislative adjustments
- Disseminate the landfill mining concept in Wallonia

## Green deal for the landfill mining of Onoz

### NONET company's Engagement

- Make the site available
- Provide financial and technical supports to the landfill mining project of the landfill of Onoz
- Decontaminate the site according to the current legislation and rehabilitate the site at the end of the project



## Municipality of Jemeppe Sur Sambre's Engagement

- Provide local support

## SPAQuE's Engagement

- Coordinate the project for the technical and scientific aspect
- Provide administrative and legal support for the feasibility study, landfill mining operations, waste revalorization and site rehabilitation
- Realization of the geophysical investigations and waste sampling



Using geophysics for landfill characterization was accepted for the first time by the Walloon Region

**RAWFILL  
characterization**

=

Geophysical measurements

+

Selected waste samples  
(boreholes, trenches)

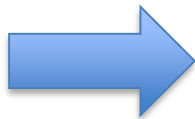
**RAWFILL  
characterization**

=

Geophysical measurements

+

Selected waste samples  
(boreholes, trenches)



3D resource distribution model

## Geophysical Methods applied on the landfill of Onoz





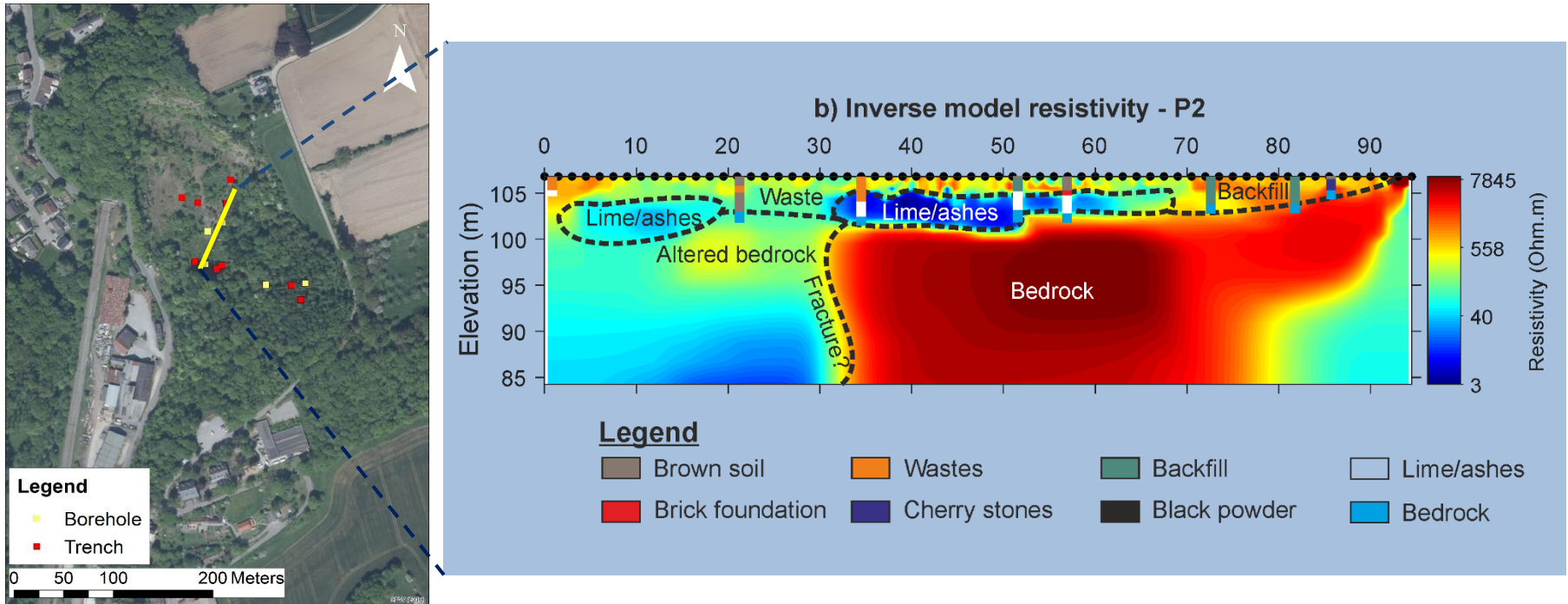
# Landfill characterization

## Waste samples

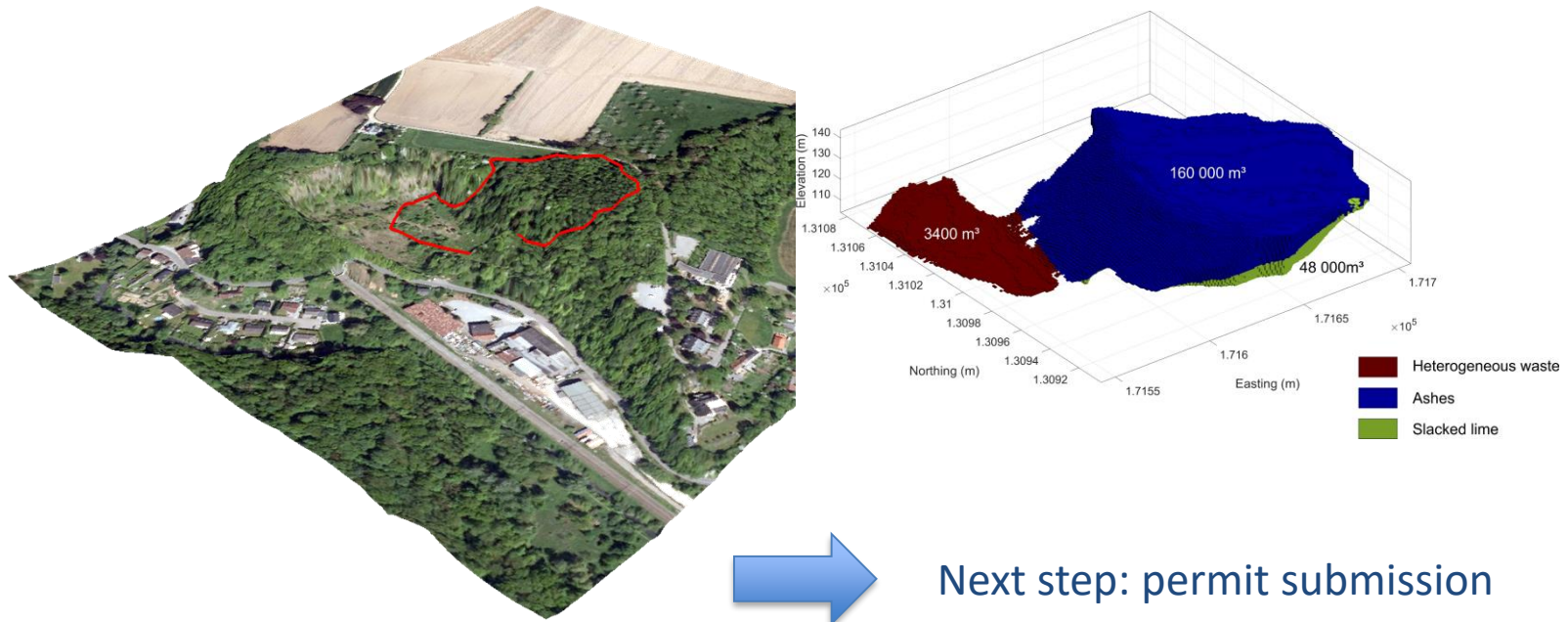




## Correlation between geophysical data and waste samples



## 3D Resource distribution model



- The Green Deal is a great support for circular economy.
- The main criteria for a green deal are the capacity to generate some results rapidly and the capacity to replicate the project.
- It provides a good base for PPP.
- The landfill mining project on the Onoz site is the first Green Deal in Wallonia.
- Clear the way for other landfill mining initiatives in Wallonia.

# Interreg



EUROPEAN UNION

## North-West Europe

### RAWFILL

European Regional Development Fund



Wallonie

**Dr. Eng. Claudia Neculau**  
RAWFILL project Coordinator

[c.neculau@spaque.be](mailto:c.neculau@spaque.be)

**Dr. Laura Lamair**  
RAWFILL project Assistant

[l.lamair@spaque.be](mailto:l.lamair@spaque.be)



**British Geological Survey**  
Expert | Impartial | Innovative



**Cleantech Flanders**

Powered by VITO