

Interreg



North-West Europe

FCRBE

European Regional Development Fund

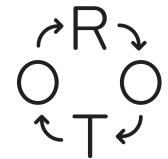
Facilitating the Circulation of Reclaimed Building Elements in Northwestern Europe

A PICTURE IS WORTH 1000 WORDS

Benefits and best practices in deconstruction

Emmanuel Cortés Garcia
CHARM Inspiration Day

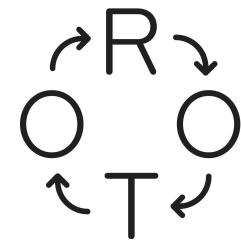
14 February 2020



Interior Design



Design Assistance



RotorDC
Deconstruction & Consulting



Exhibitions, conferences,
teaching

Research and Publications

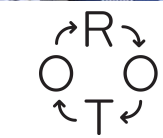


Dismantling and
reclamation of
construction elements



Interreg 
EUROPEAN UNION
North-West Europe
FCRBE
European Regional Development Fund

*Aiming for a **50%**
increase in the
amount of
reclaimed building
elements being
circulated in
North-west Europe
by **2032***




University of Brighton

 **BELLASTOCK**
ARCHITECTURE EXPERIMENTALE

 **bruxelles
environnement
leefmilieu
brussel**
.brussels

 **Construction Confederation**
Construction, Energy & Environment

 **bbri.be**
Researches • Develops • Informs

CSTB
le futur en construction

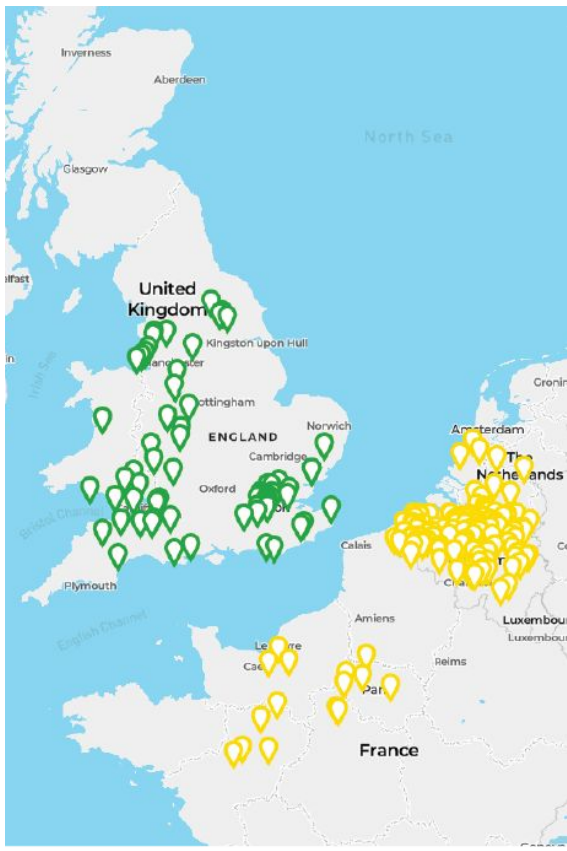
SALVO
salvoweb.com

Where to source reclaimed materials?



Project deliverables

- Online directory of reclaim professionals and dealers
- A “Truly Reclaimed” labelling scheme
- An open source pre-demolition audit method for reusable elements
- A published series of technical specification methods for reclaimed products





3 main objectives

- Enhancing Visibility =WP.T1
- Fostering extraction of reusable building elements = WP.T2
- Fostering the integration of reclaimed products = WP.T3

Recypark: winning a design competition with a multi-scenario-reclaim-based proposal

OPTION A

Dimensions : 50 x 30m
Prix : 244 100 €

OPTION B

Dimensions : 60 x 26m
Prix : 249 900 €

OPTION C

Dimensions : 86 x 32m
Prix : 252 300 €

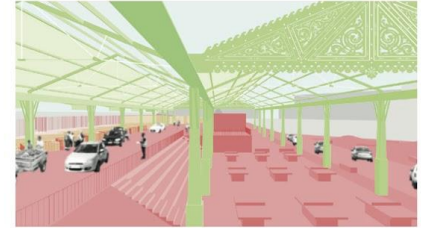
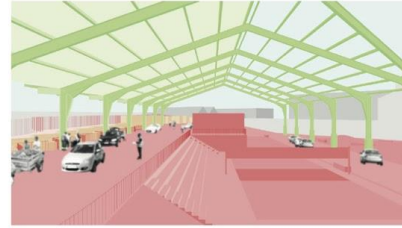
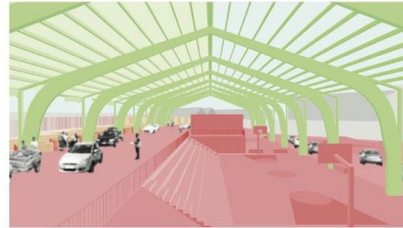
OPTION D

Dimensions : 50 x 24m
Prix : 489 700 €

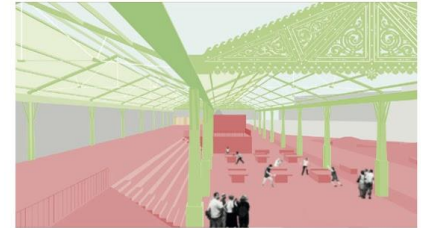
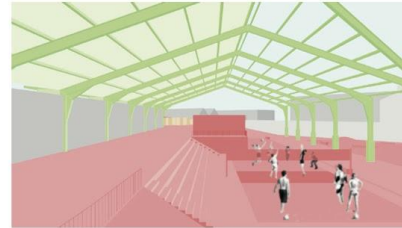
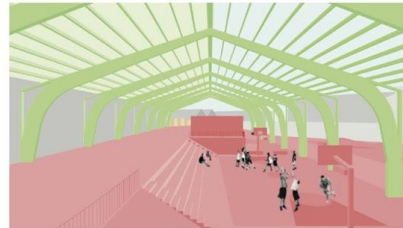
Situation existante



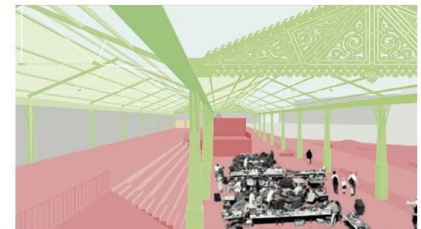
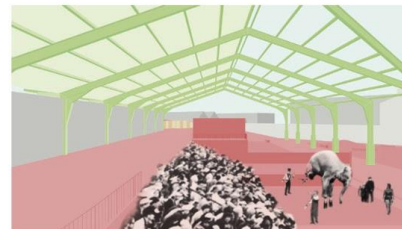
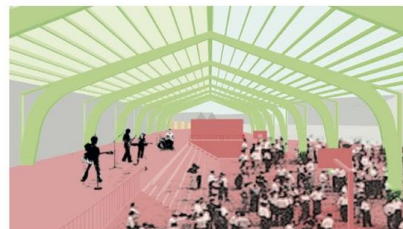
Parc à conteneurs ouvert







Activités sportives



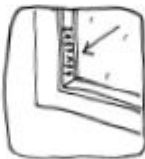




Événement spécial



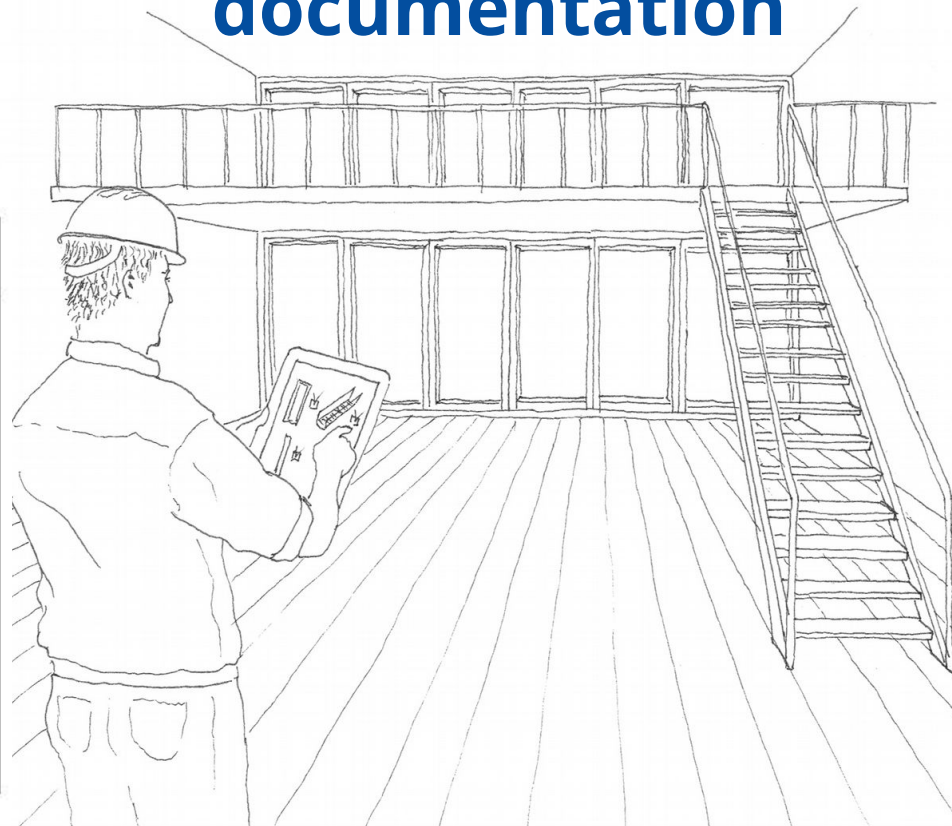
**What does a useful inventory look like?
how is it documented?**

MOUNTING PARTS	CLOSE UP	ASSOCIATED ELEMENTS	THE DISMANTLING
			
Show the fixing / mounting parts of the element.	Show particularities such as defects, small details, traces of wear and tear.	If needed, also shoot the associated elements (door handle, support brackets,...).	If you have the opportunity to do so, it is often useful to take pictures of the dismantling (be it a simple test or the actual dismantling operation). It gives information about the way elements are fixed together.

			 
For technical equipment, shoot the labels that	Show what kind of accessories are needed or parts of	On some elements, technical data can be tricky to find. For	Take a picture with a benchmark to assess its size (a meter, a

Detailed documentation

PARQUET



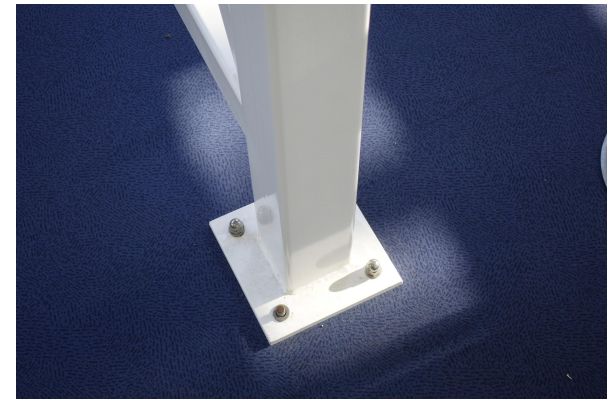
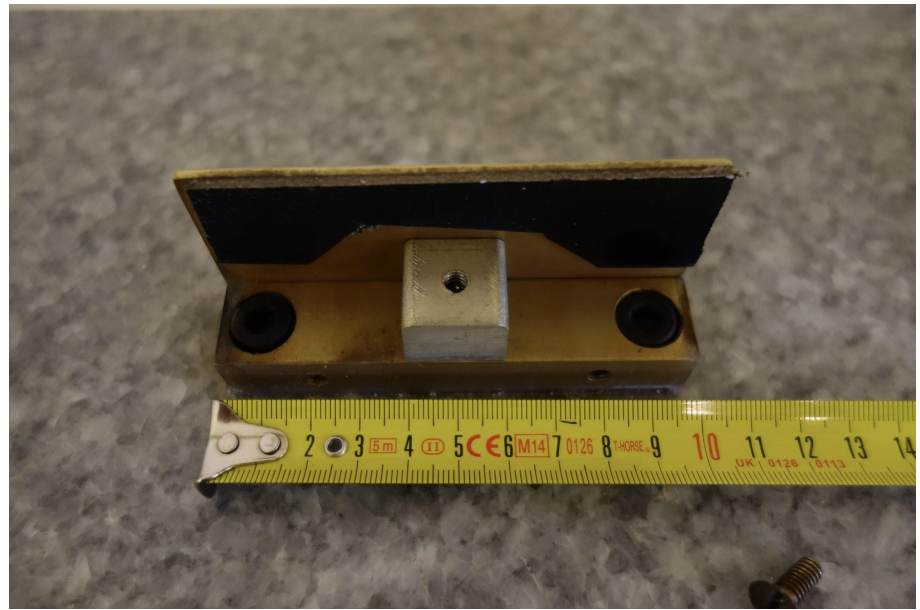
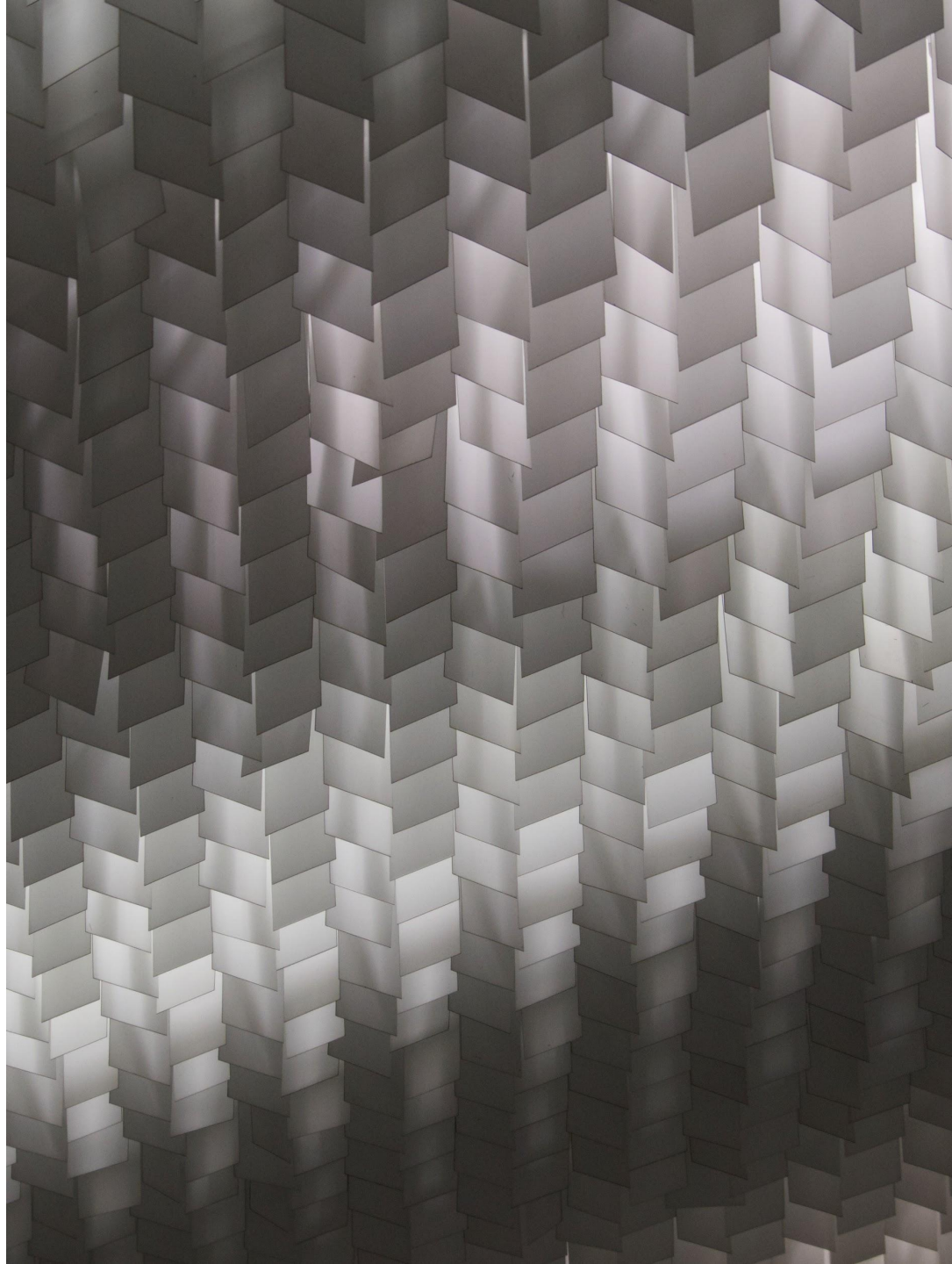


Image banks



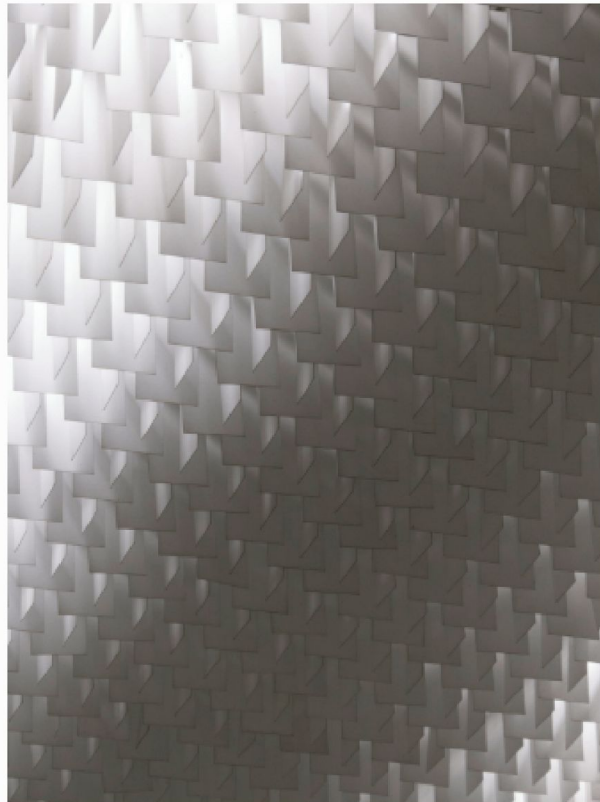








Home > Per building > Generale de Banque, Jules Wabbes & oth. , 1974 > Light diffusing ceiling 'Mille Feuille' from Générale de Banque ca. 1978



Light diffusing ceiling 'Mille Feuille' from Générale de Banque ca. 1978

Out of stock / m2

SKU: 005CEI002

Categories: [Ceiling](#), [Generale de Banque, Jules Wabbes & oth. , 1974](#)

Tags: [1970s](#), [Generale de Banque, Jules Wabbes](#), [white](#)

Description

Reviews (0)

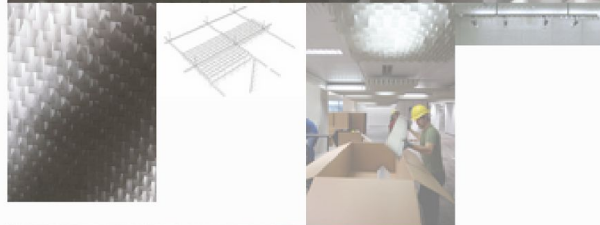
Description

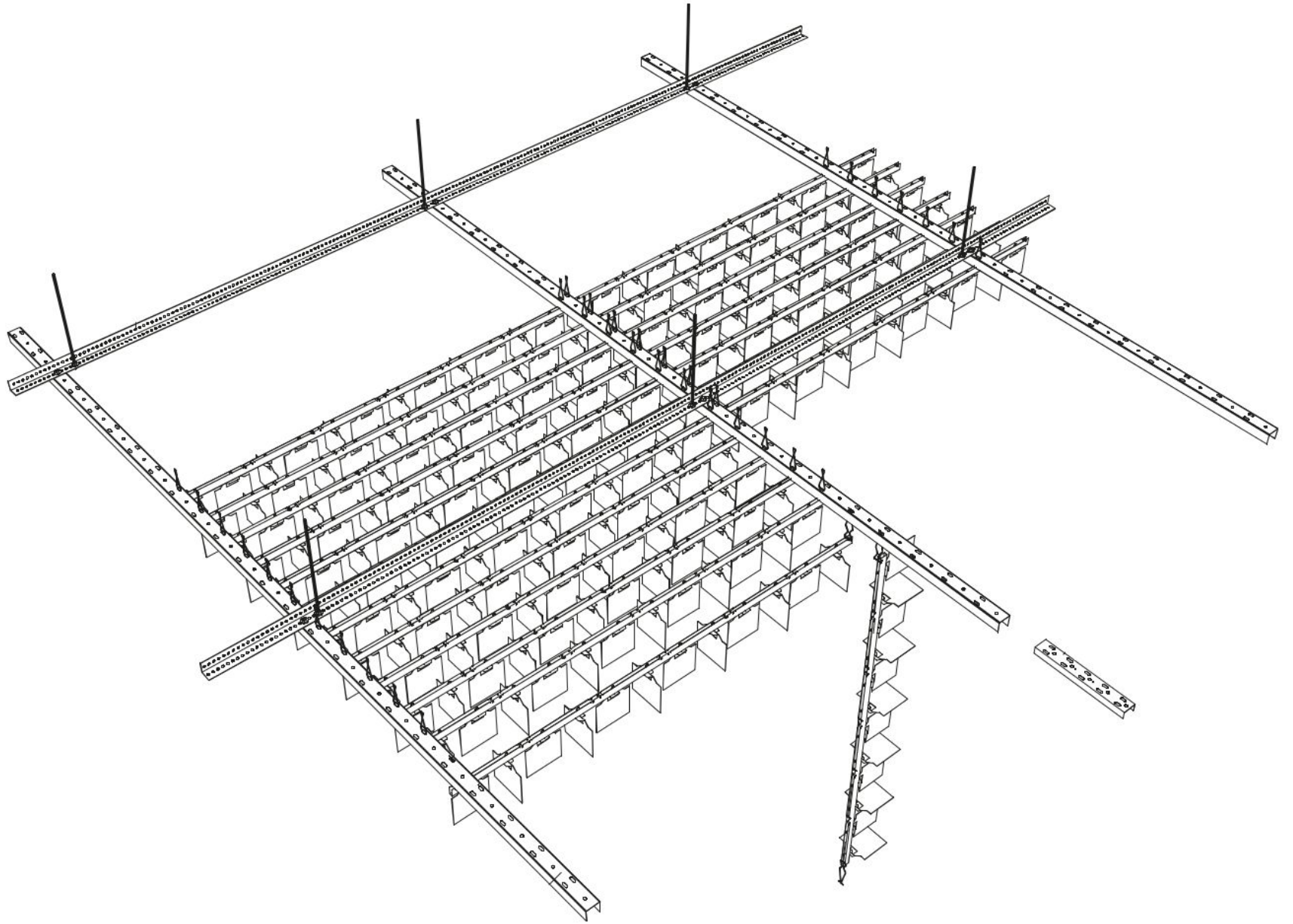
Ceiling of the entrance hall to the former Brussels headquarters of Générale de Banque. These suspended structure was used by celebrated Belgian designer Jules Wabbes in a wall-to-wall set up to hide all technical devises such as ventilation grills, lighting devises, smoke detectors, etc. Resembling bank notes hanging from the ceiling, the surface was referred to as 'mille feuille'.

The system consists of a primary suspended structure, profiles that are placed parallel every 1,6 meter. The secondary elements consist of lighter profiles with the characteristic little metal plates attached. The height of the total setup is 17cm, but at least 20cm needs to be planned to facilitate hanging. The height for optional lighting devises needs to be added to this, but can be kept to a minimum when using LED panels.

Any given horizontal surface can be clad with this material, the secondary profiles can easily be cut. However, the ceiling cannot be used for vertical cladding.

Price per square meter.







Emmanuel Cortés

emmanuelcortescgarcia@rotordb.org

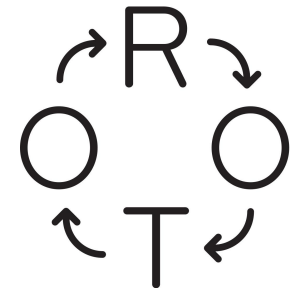
CHARM Inspiration Day

14 February, 2020

rotordb.org

rotordc.com

nweurope.eu/FCRBE



Thank you!